

The background of the advertisement features a vertical stack of four fabric swatches. From top to bottom, the colors are green, brown, blue, and dark brown. Each swatch displays a consistent grid pattern of small, raised tufts on a light-colored fabric base.

**Knoll**Textiles

---

Series II

---

SitOnIt • Seating®

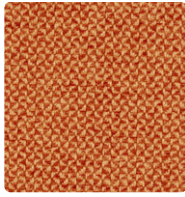
---

**IDEON**®

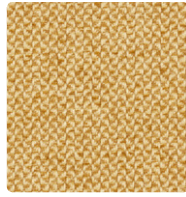




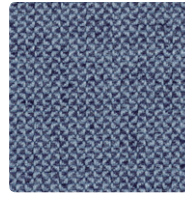
K1523 Hourglass  
10 Flame



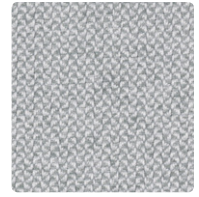
K1523 Hourglass  
7 Tangerine



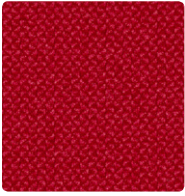
K1523 Hourglass  
6 Beeswax



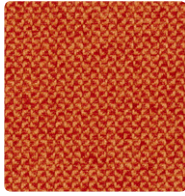
K1523 Hourglass  
13 Bluebird



K1523 Hourglass  
23 Galaxy



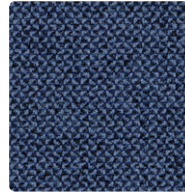
K1523 Hourglass  
9 Sizzle



K1523 Hourglass  
8 Sunshine



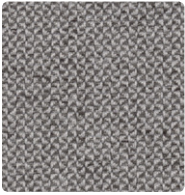
K1523 Hourglass  
21 Bark



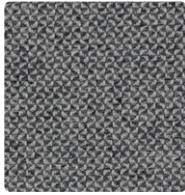
K1523 Hourglass  
14 Liberty



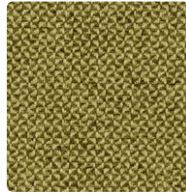
K1523 Hourglass  
27 Alley



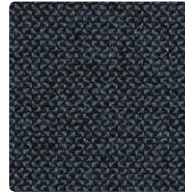
K1523 Hourglass  
24 Misty



K1523 Hourglass  
25 Iron



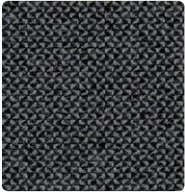
K1523 Hourglass  
17 Olive



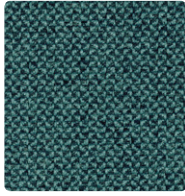
K1523 Hourglass  
15 Indigo



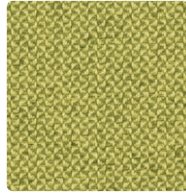
K1523 Hourglass  
28 Caviar



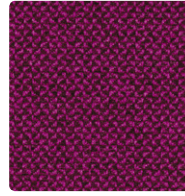
K1523 Hourglass  
26 Wire



K1523 Hourglass  
18 Aegean



K1523 Hourglass  
16 Spring



K1523 Hourglass  
11 Tart



K1523 Hourglass  
12 Jelly



K2051 Diva  
2 Daffodil



K2051 Diva  
1 Moon



K2051 Diva  
11 Platinum



K2051 Diva  
8 Evergreen



K2051 Diva  
6 Green Tea



K2051 Diva  
3 Saffron



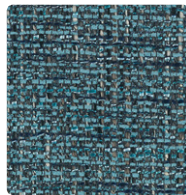
K2051 Diva  
4 Poppy



K2051 Diva  
12 Coal



K2051 Diva  
9 Wallflower



K2051 Diva  
7 Lagoon



K2051 Diva  
10 Mink



K2051 Diva  
5 Snapdragon

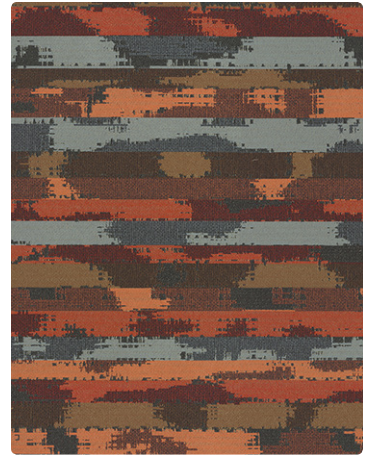




K2022 Tabloid  
1 Article



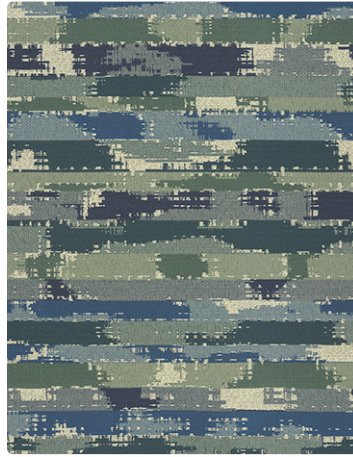
K2022 Tabloid  
4 Exclusive



K2022 Tabloid  
7 Letterpress



K2022 Tabloid  
5 Front Page



K2022 Tabloid  
8 Off the Record



K2022 Tabloid  
2 Byline



K2112 Little Devil  
5 Opal



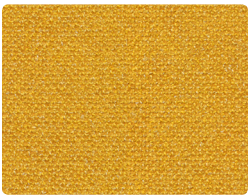
K2112 Little Devil  
4 Fire



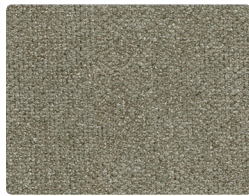
K2112 Little Devil  
10 Flannel



K2112 Little Devil  
3 Rascal



K2112 Little Devil  
2 Canary



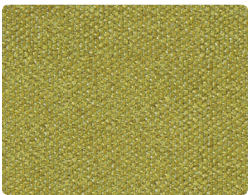
K2112 Little Devil  
11 Slate



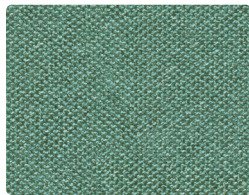
K2112 Little Devil  
1 Sandstone



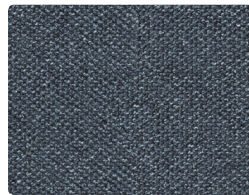
K2112 Little Devil  
9 Coffee Bean



K2112 Little Devil  
6 Lizard



K2112 Little Devil  
7 Azure

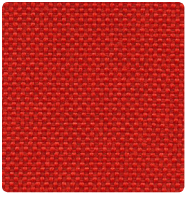


K2112 Little Devil  
8 Night Sky

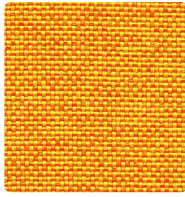


K2112 Little Devil  
12 Gray

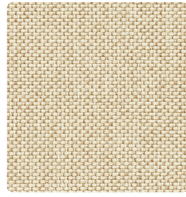




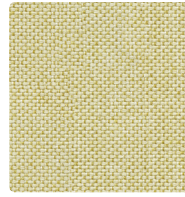
K2085 Crossroad  
6 Paprika



K2085 Crossroad  
4 Zest



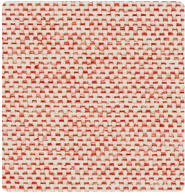
K2085 Crossroad  
22 Almond



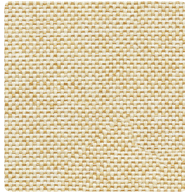
K2085 Crossroad  
17 Pistachio



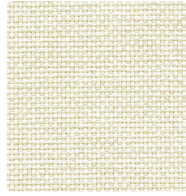
K2085 Crossroad  
12 Mineral



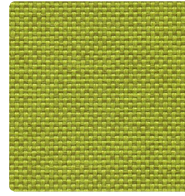
K2085 Crossroad  
5 Blossom



K2085 Crossroad  
16 Cinnamon



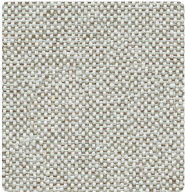
K2085 Crossroad  
1 Pearl



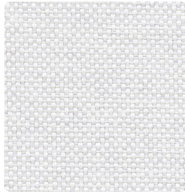
K2085 Crossroad  
7 Lime



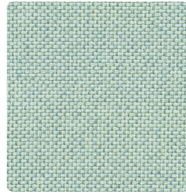
K2085 Crossroad  
2 Gravel



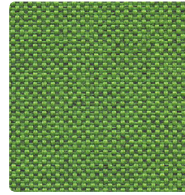
K2085 Crossroad  
21 Shadow Box



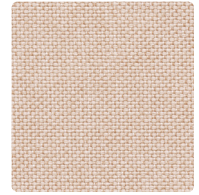
K2085 Crossroad  
13 Moon Light



K2085 Crossroad  
19 Cabana



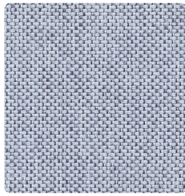
K2085 Crossroad  
8 Leaf



K2085 Crossroad  
15 Flamingo



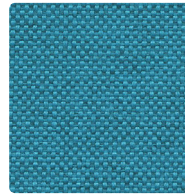
K2085 Crossroad  
14 Granite



K2085 Crossroad  
20 Tide



K2085 Crossroad  
10 Ocean



K2085 Crossroad  
9 Tropical



K2085 Crossroad  
11 Horizon



K2049 Woodland  
9 Wingtip



K2049 Woodland  
3 Blue Spruce



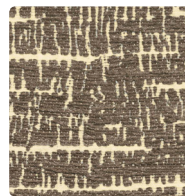
K2049 Woodland  
4 Red Pine



K2049 Woodland  
5 Alder



K2049 Woodland  
6 Sprite



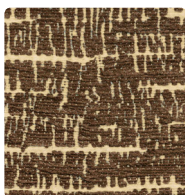
K2049 Woodland  
10 Sycamore



K2049 Woodland  
2 Cypress



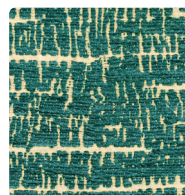
K2049 Woodland  
7 Juniper



K2049 Woodland  
8 Hickory



K2049 Woodland  
1 Beech

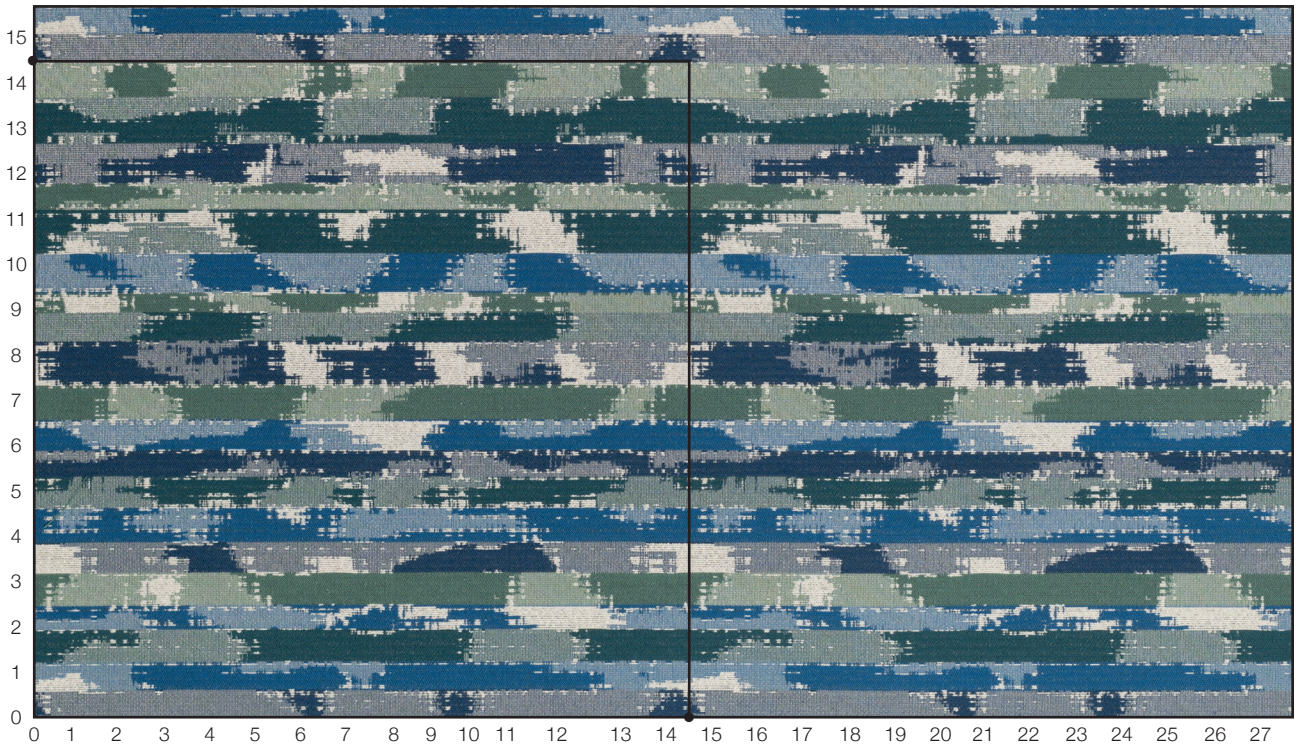


K2049 Woodland  
12 Rainfall



K2049 Woodland  
13 Willow





Tabloid K2022 Off the Record

**Repeat:** 14.5 inches vertical, 14.5 inches horizontal (approx.)



## Technical Information

Pattern	Width	Content	Finish/ Backing	Repeat	Abrasion Resistance (Double Rubs)	Cal 133	Cleaning Code	Grade
Diva	55"	55% polyester, 45% acrylic	soil & stain acrylic backing		50,000	133	W-S	5
Crossroad	54"	43% polyester, 37% pre-consumer polyester, 20% post-consumer polyester	soil & stain		95,000	133	W-S	4
Hourglass	56"	77% post-consumer polyester, 15% polyester, 8% nylon	soil & stain		100,000	133	W-S	4
Little Devil	54"	84% polyester, 14% acrylic, 2% viscose	soil & stain acrylic backing		80,000	133	W-S	5
Tabloid	57"	67% polyester, 33% post-consumer polyester	soil & stain acrylic backing	V: 14.5" H: 14.5"	60,000	133	W-S	5
Woodland	54"	71% bleach cleanable polyester 29% solution dyed nylon	soil & stain acrylic backing	V: 13.5" H: 14.25"	100,000	133	W-S-B (1:4)	7

Woodland: Not approved for Prava | Crossroad: Not approved for Prava & Achieve | Tabloid: Not approved for Nano and Pasea

For memo samples call 866.565.5858 or visit [knolltextiles.com](http://knolltextiles.com).

All ACT® icons apply to the above patterns.



### Fire Retardancy

Flammability testing determines a fabric's resistance to burning. Passes: California Technical Bulletin 117.



### Colorfastness to Wet and Dry Crocking

Colorfastness to wet and dry crocking refers to the rubbing off of color from fabric onto clothing, hands or other materials; which can occur under wet or dry conditions. Passes: AATCC 8.1974 Dry Crocking, Class 4 minimum; Wet Crocking, Class 3 minimum.



### Colorfastness to Light

Colorfastness to light is the degree to which a fabric will retain its true color when exposed to light. Passes: AATCC 16A.1974 or AATCC 16E.1976; Class 4 minimum at 40 hours.



### Physical Properties

Three physical property tests include: the brush pill test to determine a fabric's tendency to pill; breaking/tensile strength tests the ability of a fabric to withstand tension without breaking or tearing; seam slippage measures the pulling apart of fabric at the seams. Passes: Brush Pill: ASTM D3511, 3-4 minimum. Breaking Strength ASTM D3597.D1682.64 (1975) 50 lbs. minimum in warp and weft. Seam Slippage: ASTM D3597.D434.75 25 lbs. minimum in warp and weft.



### Abrasion

Abrasion is the ability of a fabric to withstand damage from wear and rubbing. Passes: Heavy Duty: ASTM 3597 modified (No. 10 cotton duck); 30,000 double rubs Wyzenbeek Method or ASTM 4966 modified (with 21 oz. weight); 40,000 rubs Martindale Method.



### Cal 133

These fabrics can be used in combination with other designated SitOnit and IDEON components to meet the California Technical Bulletin 133 standard for furniture flammability.

### Cleaning Code Definitions

W-S: Water-based cleaning agents and foam or mild, water-free solvents may be used for cleaning this fabric.

W-S-B: Clean with water or solvent based cleaning agents, or diluted household bleach.

SitOnIt • Seating®



6415 Katella Ave. • Cypress, CA 90630  
tel. 714.995.4800 • [sitonit.net](http://sitonit.net) • [ideondesign.com](http://ideondesign.com)  
Form No. C6168-07/19-7500 ©2019 Exemplis