

Knoll

Essentials
for your business in 2015





Table of Contents

Open Plan	1	Seating	26	Private Offices	37
Focused Workstations	2	Work Chairs.....	26	Individual Offices	39
Height-Adjustable Tables.....	6	Side Chairs.....	28	Shared Offices	45
Shared Workstations	9	Accessories	30	Multi-Use Offices	49
Collaborative Tables.....	12	Monitor and TV Support.....	30	Executive Seating	52
Team Workstations	14	Keyboard and CPU Support.....	32	Executive Chairs.....	52
Plannable Tables.....	18	Lighting.....	33	Executive Side Chairs.....	54
Storage	20	Desktop Management.....	34		
Reception	24				



Essentials to Inspire Your Best Work

A workplace that conforms to your fast-paced needs—rather than the other way around—can make a real difference in performance. After all, there is no one “right” way to work. Knoll recognizes that today’s diverse roles, tasks and needs require flexible products that come together in a variety of ways.

From *open plan* and *private offices* to *activity spaces*, we provide the essentials to support your greatest investments—your people and your space. Even better, most of these easy-to-order products can be in your hands in just four weeks. Talk to your Knoll dealer to create a workplace that inspires your people to do their best work.

Learn more at knoll.com/essentials

- Activity Spaces57
- Refuge Spaces58
- Enclave Spaces60
- Collaborative Tables62
- Communication Boards64
- Team Meeting Spaces66
- Meeting Tables68
- Meeting Storage70

- Assembly Spaces72
- Training Tables74
- Community Spaces76
- Café Tables78
- Café and Multi-Use Seating80
- Occasional Tables82
- Lounge Seating84

- KnollTextiles and Finishes90
- Program Exceptions96
- Sustainability Information97



An impromptu “get together” enclave space sets the tone for an active, collaborative work environment.

Individual workstations can be reconfigured as needs change, supporting those working closely together until a project is complete.

For groups that interact frequently, position desks toward coworkers for improved sight lines that help facilitate communication.

The Essentials of **Open Plan**

Reimagine your workspace. Today's open plan solutions can be designed to suit any role and work style—helping to balance personal focus with collaborative work, leveraging emerging technologies and making the best use of your space.



Four clustered tables provide ample space for team work, with the flexibility to change as needs evolve.

A bank of low storage supports both individual and group resources, with the added benefit of secondary seating.

Need focus and privacy in the open plan? Screens do triple duty—providing privacy, defining space and adding vertical workspace to tack and display.

Fence spine delineates team spaces, while channeling power and data.





Designed for concentration

- Support heads-down work without isolation
- Provide privacy through varying panel heights
- Delineate space with strategically positioned storage
- Retain open access and views

Dividends Horizon® Workstations

New faceted worksurfaces promote privacy and lend spaciousness to a compact footprint.

> Remix™ chair; Sapper™ Monitor Arm; Series 2™ storage; Sparrow™ LED light; Smokador™ desktop accessories

1



2





4

1 Dividends Horizon Workstations

Open-weave screens impart a greater sense of privacy without compromising transparency.

> Generation by Knoll® chair; Sapper Monitor Arm; Copeland™ light; Smokador desktop accessories; Dividends Horizon Low X-Base table; Spark® Series Lounge chair

! Veneer may require additional lead time.

2 Dividends Horizon Workstations

New worksurface shapes position the user toward the aisle to support collaboration with visiting colleagues.

> ReGeneration by Knoll® chair; Anchor™ credenza; Toboggan® Pull Up table; Sparrow LED light; Orchestra® desktop accessories

3 Reff Profiles™ Workstations

Taller panels provide seated-height privacy, facilitating concentrative work. Sapper Monitor Arms manage multiple monitors while leaving desk space free.

> Remix chair; Sapper Monitor Arm

4 Antenna® Simple Tables with Template™ Storage

Simple mobile tables move easily, right to where they're needed. Adjacent Template workwall provides individual and shared storage.

> Anchor pedestals; k.™ lounge stool; Generation by Knoll chair; Sparrow LED light; Smokador desktop accessories

Sit or stand—choose the right height for the work at hand. Height-adjustable tables energize users throughout the day.



1 Antenna® Telescope™ Dual Height-Adjustable Tables

Height-adjustable tables put personal preferences and well-being first in this benching application designed to maximize space.

> Generation by Knoll chair; Sapper XYZ® Monitor Arm; Sparrow LED light; Smokador desktop accessories

2 Tone™ Height-Adjustable Tables

A height-adjustable table lets users decide how they want to work. A slim, freestanding Antenna® Workspaces Fence brings power and data to users.

> Antenna Workspaces storage; Sapper XYZ® Monitor Arm; Generation by Knoll chair

3 Antenna Telescope Y-Base Height-Adjustable Tables

Invite standing or seated collaboration with tables that give users control and allow access from all sides. Interpole™, with storage and screens, channels power and defines space.

> Antenna Workspaces storage; Generation by Knoll chair; Sparrow LED light



SHARE



Open exchange of ideas

- Promote interaction with shared desktops
- Encourage movement with freestanding and mobile furniture
- Provide boundaries with personal and shared storage

Dividends Horizon Workstations

Open space and connected desktops encourage sharing.

> Generation by Knoll chair; Moment™ chair; Series 2 storage; Dividends Horizon X-Base table; Copeland light; Smokador desktop accessories



1



1 Morrison Workstations

Low panels define a shared workspace, while ample surfaces provide opportunities to collaborate.

> Reff Profiles height-adjustable sliding table; ReGeneration by Knoll chair; Moment chair; Series 2 storage; Smokador desktop accessories

2 Antenna Workspaces Workstations with Interpole

Interpole and dual-sided storage cabinets customize space while channeling power and data wherever it's needed.

> Mobile Antenna Workspaces tables; Generation by Knoll chair; Sparrow LED light; Smokador desktop accessories

3 Reff Profiles Workstations

Cabinets create a boundary between shared workstations, while a sliding table gives users a place to come together.

> Generation by Knoll chair; Reff Profiles sliding table; Sprite chair; Copeland light; Smokador desktop accessories





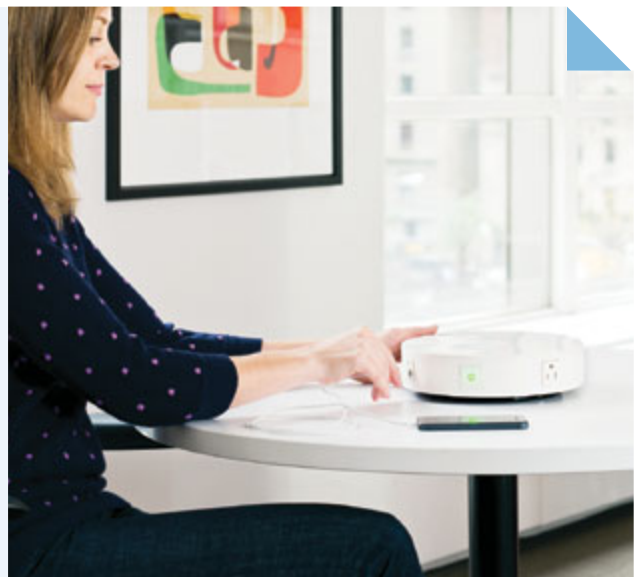
Spur spontaneous exchanges simply by adding an inviting, freestanding table to the mix.

The addition of an Antenna Workspaces round table encourages natural and spontaneous collaboration.

> Generation by Knoll chair; MultiGeneration by Knoll® hybrid chair; Sparrow LED light; Antenna Workspaces tables; KnollExtra Power Disc

PORTABLE, PLUG-AND-PLAY POWER

Make any table a user-friendly technology hub with the addition of a KnollExtra Power Disc. Created by Antenna Design with a low profile and fresh aesthetic, the Power Disc charges up to six devices.





Antenna Simple Table **NEW**

A variety of rectangular, round, square, bullet and track top shapes in heights from 25 $\frac{5}{8}$ " to 31 $\frac{1}{2}$ ". Available in 36", 42", 48" diameters, and rectangular top shapes in widths every six inches from 36" to 84"; 18", 24", 27", 30", 36"D. Shown with White laminate top and Dark Grey painted legs. Designed by Masamichi Udagawa and Sigi Moeslinger.



Antenna Workspaces Round Table

Available in 42", 48" diameters and 18 $\frac{1}{2}$ ", 24 $\frac{1}{2}$ ", 28 $\frac{1}{2}$ " heights. Shown with Walnut laminate top and Silver painted legs. Designed by Masamichi Udagawa and Sigi Moeslinger.



Antenna Workspaces Y-Base Table

Available in 36", 42" diameters and 24 $\frac{1}{2}$ ", 28 $\frac{1}{2}$ ", 36 $\frac{1}{2}$ " heights. Available with wire management and grommet. Shown with Black laminate top and Jet Black painted base. Designed by Masamichi Udagawa and Sigi Moeslinger.



Stromborg Table

Available 42"x42", 60"x30", 72"x36"D and 29"H; 0118 White outdoor laminate top and White painted legs and rails. Designed by Daniel Stromborg.

! Requires additional lead time.



Reff Profiles Sliding Table

Available in round, soft square, and soft rectangular top shapes and 26 $\frac{1}{2}$ " and 28 $\frac{3}{8}$ " heights. Round and soft square 36", 42"W. Rectangular 30"x48" and 36"x54". Shown with Black laminate top and White painted base. Designed by Brian Graham.



Reff Profiles Column Leg Table

Available in 42" and 48" diameters and 26 $\frac{1}{2}$ " and 28 $\frac{3}{8}$ " heights. Shown with Walnut laminate top and Medium Grey painted legs. Designed by Brian Graham.



Saarinen Table

Available in 35 $\frac{3}{4}$ ", 42 $\frac{1}{4}$ ", 47 $\frac{1}{4}$ " diameters and 96" oval. 28 $\frac{1}{4}$ "H. Shown with Bright White laminate and White painted base. Designed by Eero Saarinen.



Upstart™ Table ■

Available in a variety of top shapes including oval, tripod, wiper, half round, and round. Shown with 42" diameter round, 25"-30"H with Bright White laminate top and Medium Grey painted legs. Designed by Robert Reuter and Charles Rozier.



Dividends Horizon X-Base Table

Available in 30", 36", 42" round, square and rounded square tops and 28 $\frac{1}{2}$ ", 36", 42" heights. Shown 36"W, 42"H with Bright White top with Medium Grey painted base. Designed by Jeffrey Bernett and Nicholas Dodziuk.

Natural, ongoing collaboration

- Bring workers together with unobstructed sight lines
- Accommodate free-address workers with open, unassigned workspaces
- Promote free and frequent communication through casual group settings

Antenna® Workspaces Standing Height Big Table

Bring a team around a Big Table to spread out work and share ideas.

> Calibre® storage island; Reff Profiles private offices; Antenna Workspaces Fence; Anchor credenza; ReGeneration by Knoll high task chair; Generation by Knoll chair; Bertoia stool; Sapper Monitor Arm; T-light; Smokador desktop accessories





1



1 Antenna Workspaces Big Table

Back-to-back desktops with shared legs maximize space while supporting groups of any size in open plan environments, touchdown spaces and meeting areas.

> Generation by Knoll chair; Sapper Monitor Arm; Calibre pedestals

2 Tone Height-Adjustable Tables with Fence

Individually adjustable tables make a team setting more personal and responsive, while Antenna Workspaces Fence delivers flexible power and data.

> Antenna Workspaces pedestals; Generation by Knoll chair; Sapper XYZ Monitor Arm; Sparrow LED light; Orchestra desktop accessories

3 Dividends Horizon Workstations

New bowtie-shaped workstations, divided by back-to-back Anchor credenzas with digital keypad locks, are ideal for teams or free-address use.

> Remix chair; Anchor storage; Sapper Monitor Arm; Smokador desktop accessories





The unsung hero of workplace space planning—the table—delivers limitless flexibility and essential functionality.



Antenna Simple Tables NEW

Simple yet functional, these contemporary mobile tables are ready to take on a wide range of applications. Easy to link and designed to store and manage your power.



Antenna Workspaces Desks

Group desks to allow teams to convene around a generous, uninterrupted worksurface.



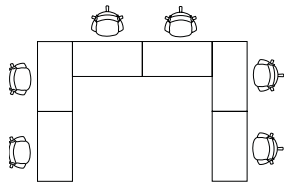
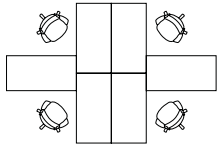
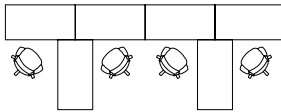
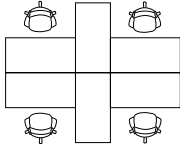
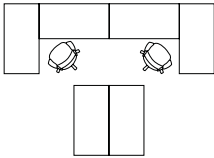
Upstart Tables ■

Practical by design, tables reconfigure easily as workplace needs change. Available in a wide range of shapes and sizes to arrange any way you like.

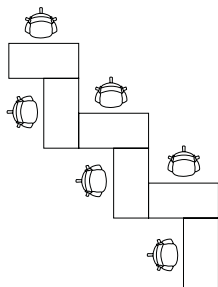
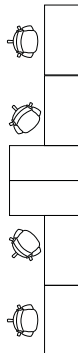
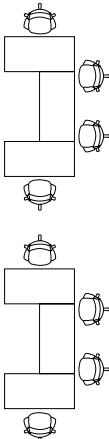
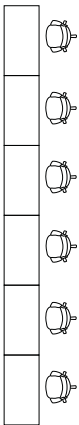
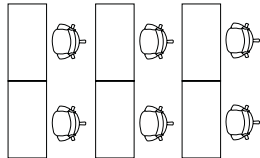
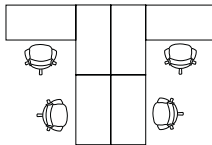
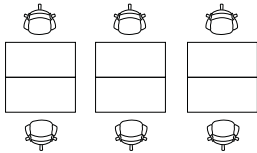
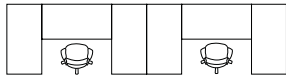
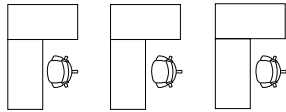
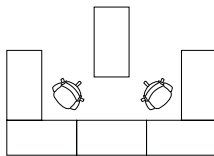


Propeller® Tables

Myriad shapes and sizes, easy-release ganging mechanisms, and casters or glides offer virtually unlimited options.



Start with six mobile tables and the possibilities are endless. With myriad possible configurations, teams create favorites to call their own.



STORAGE

Think beyond storage and imagine exciting new ways to impart privacy and organize space, maximizing every inch of the available footprint.

The wide range of Knoll storage styles are represented here by the simple mobile pedestal.

> See Essentials Price List for additional configurations, alternative pull and finish options.

- | | |
|-----------------------------------|----------------------------|
| FP Floorstanding pedestals | CB Cabinets |
| MP Mobile pedestals | BK Bookcases |
| DW Doublewide pedestals | HY Hybrid Units |
| LF Lateral files | LO Lockers |
| CR Credenzas | WA Wardrobes |
| TO Towers | OH Overhead Storage |

Anchor storage presents modern configurations for shared supplies and personal items, while remaining conscious of a compact footprint.

NEW Mixed laminate option



Series 2
FP MP DW TO
Shown in White paint



Series 2 with Currents front
FP MP DW TO
Shown in Black paint



Series 2 with Recessed Pull
FP MP DW TO
Shown in Silver paint



Series 2 with Morrison front
FP MP DW TO
Shown in Black paint



Series 2 with Template front
FP MP DW TO
Shown in Silver paint



Anchor
FP MP DW CR TO LO OH
Shown in Walnut laminate

NEW 12"W
option for
compact
spaces

**Reff Profiles****FP MP DW CR TO CB BK LO WA OH**

Shown in Light Walnut veneer

! Veneer may require additional lead time.

**AutoStrada®****FP MP DW CR TO CB BK WA OH**

Shown in White paint

**Calibre®** ■**FP MP LF TO CB BK HY WA**

Shown in White paint

**Antenna Workspaces with Insert pull****FP MP DW TO CB BK LO WA OH**

Shown in White paint

**Antenna Workspaces with Edge pull****FP MP DW TO CB BK LO WA OH**

Shown with Silver case and Walnut laminate fronts

**Antenna Workspaces with Loop pull****FP MP DW TO CB BK LO WA OH**

Shown in Black paint

1



2





1 Anchor Storage

An Anchor credenza forms the foundation for an Antenna Workspaces benching application, while a worksurface stacker with writable back provides space to store reference materials and personal items.

> Remix chair; Sapper XYZ Crossbar Monitor Arm; Sparrow LED light; Smokador desktop accessories

2 Anchor Mobile Pedestals **NEW**

Choose the pedestal that's right for you—balancing the paper, technology, and personal items you need at arm's reach. 16" or new 12"W for compact footprints.

3 Template Storage

A storage spine neatly combines individual storage and shared, open shelving for group resources. The result is a functional backdrop for reconfigurable Antenna Simple tables.

> k. lounge stool; Anchor lockers; Generation by Knoll chair; Smokador desktop accessories

KEYLESS, SECURE STORAGE

Anchor offers programmable digital locks ideal for mobile and free-address workers. Available on lockers, credenzas and select pedestals, providing secure storage in both individual workspaces and communal areas.



RECEPTION



How should guests feel when they walk through your doors? Create a reception setting that conveys your culture and brand.

1 Reff Profiles Reception

A clean, space-saving station allows the receptionist to complete tasks without distraction, while classic lounge furnishings and video display make a statement.

> Interpole; Sapper Monitor Arm; Barcelona lounge chair

2 Antenna Workspaces Reception

A light-scale desk with added modesty panels sets a friendly tone while establishing personal workspace.

> Generation by Knoll chair; Sprite chair; Smokador desktop accessories

3 Reff Profiles Reception

Elegant and customizable, this station can remain clean and streamlined or personalized with your company logo to establish a strong brand from the moment a visitor steps in.

> D'Urso Swivel lounge chair

4 Antenna Workspaces Reception

An Antenna L-desk outfitted with a unique S-screen welcomes visitors and conceals work materials from view.

> Antenna Workspaces storage; Generation by Knoll chair; Universal fabric board; Sparrow LED light





3



4

WORK CHAIRS

Sit how and where you want with our thoughtfully designed portfolio of task seating.



Remix® NEW

Remix intelligently layers upholstered comfort with innovative Flex Net Matrix technology for active, all-day support. Best of NeoCon Gold, 2014. Designed by Formway Design.

Shown with height adjustable arms, plastic base, tilt tension control with three-point tilt lock, sliding seat; back and seat in Delite, Catalina.



Life® ■

Intuitive adjustments, a slim silhouette and broad finish palette set the standard for ergonomic, innovative design. Designed by Formway Design.

Shown with high performance arms, synchronized recline with auto-balanced tension, sliding seat; Back Suspension Fabric in Navy and Knitted Seat Topper in Dark Blue.



Generation by Knoll® ■

Best of NeoCon Gold award-winning Generation offers a new standard of comfort and unrestrained movement. Designed by Formway Design.

Shown with Dark finish and high performance arms, plastic base, Dynamic Suspension control, sliding seat, Flex Back Net and Generation Fabric seat in Bluemarine.



ReGeneration by Knoll® ■

Innovative in its simplicity, ReGeneration by Knoll minimizes materials and components. Designed by Formway Design.

Shown with high performance arms, plastic base, Dynamic Suspension control, sliding seat, Flex Back Net and Generation Fabric Seat in Onyx.



ReGeneration by Knoll® High Task

ReGeneration provides the comfort and support users need as they move about their day without interrupting their work flow. Designed by Formway Design.

Shown with height adjustable arms, Dynamic Suspension control, sliding seat, Flex Back Net and Generation Fabric Seat in Onyx.



RPM®

Engineered for durability and designed for ultimate comfort, RPM delivers unparalleled support and a full range of ergonomic adjustments. Designed by Carl Magnusson.

Shown with high performance arms, advanced control, upholstered in Chroma, Black.



Chadwick® ■

Perfect for working, meeting or training, Chadwick is designed to anticipate and respond to the body's movements using minimal, easy adjustments.

Designed by Don Chadwick.

Shown with Adjustable arms and tilt stop control; Chadwick Fabric in Black.



Chadwick® High Task

Chadwick, available in a high task version with an adjustable foot ring, strikes the perfect balance of simplicity and innovation. Designed by Don Chadwick.

Shown with Adjustable arms and tilt stop control; Chadwick Fabric in Silver.



EWC Sport™ ■

Visually inviting EWC Sport offers lasting comfort and an inventive interplay of upholstery elements. Designed by Jeffrey Bennett and Nicholas Dodziuk.

Shown with fully upholstered height adjustable back, high performance arms and plastic base, with synchro tilt control. Optional sliding seat upholstered in Ransom, Loot. Outer back and optional seat accents in EWC Sport, Beige Taupe.



EWC Pro™ ■

An upholstered chair with a tailored look, EWC Pro has a traditional appeal and satisfies a classic aesthetic. Designed by Jeffrey Bennett and Nicholas Dodziuk.

Shown with height adjustable arms, upholstered back with plastic outer back, synchro tilt control, upholstered in Mariner, Steel.



EWC Tech™ ■

A slim, wave-like suspension back is as comfortable as it is attractive. Designed by Jeffrey Bennett and Nicholas Dodziuk.

Shown with high performance arms and fixed suspension back, synchro tilt control, EWC Tech suspension back in Clear Gray and seat in Presto, Navy Blue.

SIDE CHAIRS

Critical for impromptu collaboration, Knoll side chairs provide much needed versatility in the workplace—and add a pop of color.



MultiGeneration by Knoll Hybrid Chair

A unique design combines the responsiveness of a cantilevered form with the mobility of four-leg construction. Designed by Formway Design.

Shown armless with Chrome frame finish, hard casters, Off White shell.



MultiGeneration by Knoll Stacking Chair

Designed to promote comfort and movement in a variety of collaborative work environments. Stacks 6-high on the floor or 10-high on a dolly. Designed by Formway Design.

Shown with fixed arms, silver frame finish, hard casters, Onyx shell.



EWC Tech Side Chair

The perfect pull-up chair for meeting, collaborative or training areas. Stacks 3-high on the floor. Designed by Jeffrey Bennett and Nicholas Dodziuk.

Shown with fixed arms.



EWC Pro Side Chair

With traditional styling and diverse finish options, the EWC Pro side chair delivers Knoll quality and a tailored look in a more value-conscious package. Stacks 3-high on the floor. Designed by Jeffrey Bennett and Nicholas Dodziuk.

Shown with fixed arms, plastic outer back.



Moment Chair

A pure expression of the cantilevered form, Moment is a streamlined, elegant counterpoint to any workspace. Stacks 4-high. Designed by Jeffrey Bennett and Nicholas Dodziuk.

Shown in painted Metallic Silver finish with Red back, seat in base grade Presto, Red Carpet.



Gigi® Swivel Chair

Light in spirit and flexible in application, a variety of add-on components offer the freedom to suit any space.

Shown in Black.



Gigi Chair

A distinctive profile gives the seat back strength and flexibility, while a variety of add-on components offer the freedom to suit any space.

Shown in Graphite.



Krusin Side Chair

An industrialized craft aesthetic modernizes the traditional chair. Designed by Marc Krusin.

Shown in Burnt Walnut with upholstered seat in Nonchalant, Cornflower.

+ Also available in Beech, Ebonized and Light Cherry finishes.



Bertoia Side Chair

An icon in industrial wire, the chair is a study in space, form and metal. Polished Chrome finish. Designed by Harry Bertoia.

Shown with seat cushion upholstered in Ricochet, Flame.

+ Bertoia Barstool also available



Toboggan® Chair Desk

Making clever use of shape and scale, Toboggan allows users to shift 360 degrees in the seat, with the back serving as back rest, arm rest or impromptu tablet worksurface. Designed by Masamichi Udagawa and Sigi Moeslinger.

Shown with Bright White frame and White Oak veneer.

+ Seat, Bench and Pull Up table also available



Sprite Chair

Organically inspired molded plywood, the simple Sprite chair form is sure to complement any environment. Stacks 8-high. Designed by Ross Lovegrove.

Shown in Maple.



Spark® Series Side Chair

Bright colors and a unique personality add energy to any space. Stacks 6-high on floor, 10-high on Spark dolly. Approved for indoor and outdoor use.

Shown in Light Grey.

+ Spark Lounge Chair also available



k.™ lounge Stool **NEW**

Comfortable, lightweight and easy to move, this upholstered seat fits in anywhere.

Shown in Heirloom Tomato.

+ 10 modular elements also available



Washington Skin™ Nylon Side Chair

Subtly adorned and sculptural, David Adjaye's responsive, cantilevered chairs add shape to the landscape.

Shown in Grey.



X3 Stacking Chair

Highly graphic and engaging, the X3 armless chair stacks 8-high on the floor. Designed by Marco Maran.

Shown with Smoke and Polished Chrome finish.



CHIP Chair

Inspired by the curves of the sea in motion, CHIP stacks 12-high on the floor. Designed by Antti Kotilainen.

Shown with White shell and Polished Chrome finish.



Olivares Aluminum Chair

A refined sculptural presence, Olivares chair stacks 6-high on the floor. Designed by Jonathan Olivares.

Shown with Grey finish.



True tech support, the Knoll Monitor Arm Portfolio offers clean design paired with intuitive adjustment so users can easily adapt their work environment.

Sapper XYZ® ■

Moving beyond the traditional X and Y axes range of motion, Sapper XYZ offers fluid, three-dimensional movement. The inventive design features one-touch adjustability, critical to the high-performance workplace. Designed by Richard Sapper.

NEW Sapper XYZ Crossbar in White, above. Single Sapper XYZ Monitor Arm Clamp kit in Black, shown left. Also available in Bright White, Medium Grey and Silver.



Sapper Single Monitor Arm



Sapper Double Monitor Arm



Sapper Triple Monitor Arm



Sapper 50 Monitor Arm



Sapper Multiple Monitor Beam Solutions

Sapper™ Monitor Arm Collection ■

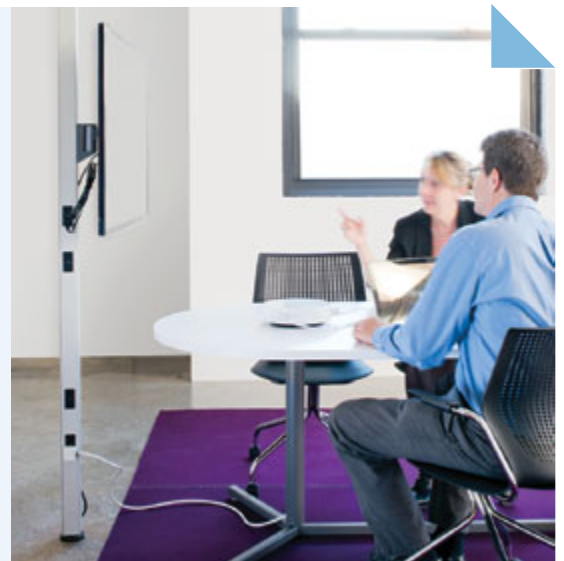
Mount from one to eight monitors in a variety of configurations, and change as the organization's needs change. A variety of mast heights, arm styles and mounting options to suit every application. Designed by Richard Sapper.

All monitor arms available in Bright White, Medium Grey, Jet Black and Silver.

+ Also available **NEW** Sapper 50 Double Monitor Arm

MULTIMEDIA ANYWHERE

Interpole and a Sapper Monitor Arm give you the freedom to video display anywhere. Monitors can be mounted at any height on the pole; users plug in to built-in power and data ports.





Technology support products maximize space and comfort with thoughtful solutions for keeping tools at hand.

1 Act I ■

Track length options are 16", 18", 22", 23" and 25".

Keyboard support available in FSC certified MDF board or phenolic plastic.

2 Act II ■

Track length options are 16", 18", 22", 23" and 25".

3 Prospero

Track length options are 16", 18", 22", 23" and 25".

4 Romeo and Juliet

Track length options are 16", 18", 22", 23" and 25".

All keyboard platforms available left- or right-handed with Advanced Easy Lift, Easy Lift, Short Easy Lift and Sit/Stand mechanisms as well as the option to pivot.

5 Adjustable Sling CPU Holder

Make the most of desktop and floor space by suspending the CPU from the underside of the worksurface.





The new KnollExtra LED Light Series designed by Antenna Design gives off warm, inviting light and provides individual control without taking up a lot of desk space.

1 Sparrow™ ■

Inspired by a small bird perched on a power line, Sparrow combines light design with advanced technology and instinctive controls. Base, clamp or Antenna Workspaces beam mount, in Black finish with stainless steel wire. Three-stepped dimmer and optional occupancy sensor.



Highwire™ ■

Simple lines, intuitive controls and the ability to interconnect heighten Highwire's appeal. 19", 37", 67" and 79" lengths in Silver or Black finish. Three-stepped dimmer and optional occupancy sensor.



3 Copeland™ ■

A dual-mode head can be inverted to match light intensity to the task at hand. Standard and compact sizes, multiple mounting options, and Silver or Black finish. CFL technology. Designed by Stephen Copeland.



2 T-light

Mounts on Antenna Workspaces center beam to provide even illumination across the worksurface. 13" or 21" heights in all core paint and Antenna Workspaces Accent paint finishes. Advanced LED technology and three-stepped dimmer.

DESKTOP MANAGEMENT

Choose work tools that match your team's personal work styles and preferences.

1



2



3



4



5



6



7



8



Smokador™

Crisp, clean design elevates the work tool from basic to elegant. Executive Rectilinear Collection available in Black Oxide, shown.

1 Single Letter Tray

Recessed rubber feet and felt bottom prevent scuffing.

2 Double Letter Tray

2½" between trays. Also available with three trays.

3 Memo Box

Elegantly holds memo size sheets at the ready.

4 Round Clip Cup

Simple design elevates the basic office supply.

5 Round Pencil Cup

Nonskid rubber pad keeps pencils within reach.

6 Business Card Holder

Felt base protects the desktop finish.

7 Desk Pad

Define your space. Available with 1½" or ¾" metal side panels in specified finishes.

8 Round Wastebasket

15-quart capacity. Nontoxic.

Rectilinear Wastebasket 24-quart capacity. (Not shown.)



Lift work tools off the worksurface to maximize space and keep them within arm's reach.

2



3



1 Orchestra®

Taking space planning to the micro level, Orchestra creates order in a personal way. Available in Soft Grey, Medium Grey, Black, and Clear, shown.

Left to right: Slanted Sorter, Side Letter Tray, Utility Tray, Memo Tray, Pencil Cup, Tape Dispenser, File Sorter

Orchestra is available through EssentialsNow in Clear and Black finish. ■

2 Two-Way Binder Bin

Vertical or horizontal. Suits rail-mounted, desktop and overhead storage.

3 Vertical Paper Rack

Holds memo, letter, legal and unbound EDP-size material.



Essential to any private office—seating for you and your guests.

Primary workspace is critical—spread out and create your next big idea.

Storage for essential resources does double duty; providing another surface for keeping materials at-the-ready.



Consider a secondary meeting space with the addition of a small, collaborative table.

Need more storage? Think vertically. Additional cabinet and overhead storage keeps displays, personal items and reference materials within arm's reach.

The Essentials for **Private Offices**

The private office has evolved into a space that not only supports concentrative individual work, but also hosts full-team meetings and brainstorming. Whether minimalist or outfitted to the hilt, the essentials remain the same—expansive work surfaces, necessary storage, inviting seating and accessories that work as hard as those who use them.



INDIVIDUAL



Table for one

- Create efficiency by placing storage and accessories within easy reach of the desk
- Support occasional visitors with comfortable guest chairs
- Enhance productivity with technology access, work tools and user-controlled lighting

Reff Profiles Private Office

An efficient private office with generous peninsula worksurface and open frame leg lends itself to a spacious and inviting workspace.

> Generation by Knoll chair, Moment chair; Sapper Monitor Arm



1



1 Reff Profiles Private Office

Simple, efficient lines make sense for any environment. Storage, writable surfaces and technology all converge on the user. Designed by Brian Graham.

> Life chair; MultiGeneration by Knoll hybrid chair; Sapper Monitor Arm

2 Antenna Workspaces Private Office

A lean, streamlined desk is complemented by Calibre storage for a modern, functional space. Designed by Sigi Moeslinger and Masamichi Udagawa.

> Generation by Knoll chair; Bertoia side chair; Calibre storage

3 Dividends Horizon Wall-Mounted Private Office

Expansive worksurfaces combined with wall-mounted, freestanding and mobile storage take full advantage of the available footprint. Designed by Jeffrey Bennett and Nicholas Dodziuk with David Noel.

> Generation by Knoll chair; Template credenza; Moment chair; Orchestra slatwall accessories

2



3



1



1 Antenna Workspaces Private Office

An Antenna Workspaces desk and off-the-floor storage complement a light aesthetic. Designed by Sigi Moeslinger and Masamichi Udagawa.

> Generation by Knoll chair; Moment chair

2 Antenna Workspaces Private Office

Sweeping worksurfaces and extensive storage provide ample space for work materials and private files. Designed by Sigi Moeslinger and Masamichi Udagawa.

> Life chair; Moment chair; Copeland light; Smokador desktop accessories

3 Reff Profiles Private Office

Architectural and professional, a prominent table desk takes center stage. Designed by Brian Graham.

> Life chair; Saarinen Executive Arm chair; Sapper XYZ monitor arm; Scribe™ mobile marker board; Smokador desktop accessories

! Veneer may require additional lead time.





A private-shared hybrid

- Foster collaboration with shared workspaces, storage and space
- Accommodate concentrative work through clearly delineated individual work areas
- Support performance with personalized work tools, user-controlled lighting and easy technology access

Dividends Horizon Shared Private Office

A center peninsula brings people together while separating individual space. Open storage makes it easy to quickly retrieve resources.

> Calibre storage; Universal fabric board; Generation by Knoll chair





1 Reff Profiles Private Office

This polished yet practical shared office includes a sliding, height-adjustable collaborative table for added flexibility.

> Generation by Knoll chair; Sapper XYZ Crossbar monitor arm; Saarinen Executive Arm chair

2 Propeller Shared Office

Adding a privacy screen to back-to-back Propeller tables provides a measure of separation for office mates who also perform individual tasks.

> Chadwick chair; Copeland light; Smokador desktop accessories

3 Antenna Workspaces Big Table Shared Office

A compact space becomes a comfortable dual office for frequent travelers or those who aren't on-site full-time.

> Generation by Knoll chair; AutoStrada mobile pedestal



MULTI-USE





Flexible spaces for shifting work styles

- Choose desks that can double as meeting tables
- Create plug-and-play efficiency through integrated technology access
- Anticipate changing group needs with moveable furniture

Antenna Workspaces Private Office and Meeting Room

A complementary desk and Big table give equal weight to dual roles as private office and multi-functional workspace. Designed by Masamichi Udagawa and Sigi Moeslinger.

> Generation by Knoll chair; MultiGeneration by Knoll hybrid chair



1 Private Workspace and Meeting Area

A writable surface, storage and technology support are all integrated into Interpole, providing a sense of architectural separation. A sliding, height-adjustable Reff Profiles table completes the highly flexible workspace.

> Generation by Knoll chair; MultiGeneration by Knoll hybrid chair; Sapper Monitor Arm

2 Private Office and Brainstorm Area

An Antenna Workspaces desk, storage and round collaborative table create consistency throughout this multi-functional private office. Designed by Masamichi Udagawa and Sigi Moeslinger.

> Generation by Knoll chair; MultiGeneration by Knoll hybrid chair; Copeland light; Sapper Monitor Arm

3 Private Office and Meeting Room

A track shaped Antenna Workspaces desk encourages visitors to pull up chairs on all sides. Storage supports private and team needs in a multi-use office.

> MultiGeneration by Knoll hybrid chair; Template storage; Stones

2



3



EXECUTIVE CHAIRS



Executive and side seating should work together—like any other team you bring in—as a key to success for a productive space.



Remix High Back **NEW**

Remix celebrates the use of unconventional materials with its expressive outer back, and the detailed stitching and clean lines give it a distinguished appeal. Designed by Formway Design.

Shown with aluminum loop arms, aluminum base, tilt tension control with three-point tilt stop, sliding seat, back and seat in Spinneybeck Volo leather, Stonehenge.



Remix **NEW**

Remix intelligently layers upholstered comfort with innovative Flex Net Matrix technology for active, all-day support. Best of NeoCon Gold, 2014. Designed by Formway Design.

Shown with high performance arms, plastic base, tilt tension control with three-point tilt stop, sliding seat, back and seat in Delite, Onyx.



Generation by Knoll ■

Best of NeoCon Gold award-winning Generation offers a new standard of comfort and unrestrained movement. Designed by Formway Design.

Shown with dark finish and polished aluminum base, height adjustable arms, Dynamic Suspension control, sliding seat, Flex Back Net in Onyx and seat in Spinneybeck Sabrina leather, Black.



ReGeneration by Knoll ■

Innovative in its simplicity, ReGeneration by Knoll minimizes materials and components. Designed by Formway Design.

Shown fully upholstered in Spinneybeck Volo leather, Jasper, with a polished aluminum base, high performance arms, sliding seat and Dynamic Suspension Control.



Life ■

Intuitive adjustments, a slim silhouette and broad finish palette set the standard for ergonomic, innovative design. Designed by Formway Design.

Shown with polished aluminum base, clear hard casters, high performance arms, synchronized recline with auto-balanced tension, sliding seat, Back Suspension Fabric in Bronze, seat topper in Spinneybeck Volo leather, Toast.



EWC Sport™ ■

Visually inviting EWC Sport offers lasting comfort and an inventive interplay of upholstery elements. Designed by Jeffrey Bennett and Nicholas Dodziuk.

Shown with fully upholstered height adjustable back, high performance arms and plastic base, with synchro tilt control. Optional sliding seat upholstered in Presto, Charcoal. Outer back and optional seat accents in EWC Sport, Black.



EWC Pro Mid-back ■

An upholstered chair with a tailored look, EWC Pro has a traditional appeal and satisfies a classic aesthetic. Designed by Jeffrey Bennett and Nicholas Dodziuk.

Shown with polished aluminum base, high performance arms, height-adjustable back, upholstered outer back, synchro tilt control, sliding seat, upholstered in Spinneybeck Volo leather, Mammoth Cave.



RPM

Engineered for durability and designed for ultimate comfort, RPM delivers unparalleled support and a full range of ergonomic adjustments. Designed by Carl Magnusson.

Shown with high performance arms, advanced control, height adjustable back, sliding seat, five-position tilt lock, forward tilt, and Spinneybeck Volo leather, Tuscany.

EXECUTIVE SIDE CHAIRS



Saarinen Executive Armless Chair

Timeless and versatile, one of Knoll's most popular designs. Designed by Eero Saarinen.

Shown in Ricochet, Ebony with Polished Chrome legs.



Saarinen Executive Arm Chair **NEW**

Chosen for nearly every Florence Knoll interior, this 1950 design remains one of our most popular. Designed by Eero Saarinen.

Shown in Chroma, Silver with Polished Chrome legs.



MultiGeneration by Knoll Hybrid Chair

A unique design combines the responsiveness of a cantilevered form with the mobility of four-leg construction. Designed by Formway Design.

Shown with fixed arms, upholstered seat, hard casters, in Chrome frame finish, Onyx shell and upholstered seat in Generation fabric, Onyx.



MultiGeneration by Knoll Stacking Chair

Designed to promote comfort and movement in a variety of work environments. Stacks 6-high on floor or 10-high on dolly. Designed by Formway Design.

Shown with fixed arms, upholstered seat, glides, in Silver frame finish, Onyx shell and upholstered seat in Generation fabric, Onyx.



Ricchio Arm Chair

An effortless aesthetic complements comfortable proportions. Designed by Joe and Linda Ricchio.

Shown with upholstered seat in Light Cherry finish.

+ Also available in Burnt Walnut, Ebonized and Beech.



Ricchio Side Chair

Proportioned and detailed for comfort. Designed by Joe and Linda Ricchio.

Shown with upholstered seat in Beech finish.

+ Also available in Burnt Walnut, Ebonized and Light Cherry.



Moment Chair

A pure expression of the cantilevered form, Moment is a streamlined, elegant counterpoint to any workspace. Stacks 4-high. Designed by Jeffrey Bennett and Nicholas Dodziuk. Shown with Almost Black back, seat in Volo Black, Almost Black in Trivalent Chrome frame finish.



Krusin Side Chair

An industrialized craft aesthetic modernizes the traditional chair. Designed by Marc Krusin. Shown with arms in Burnt Walnut finish with upholstered seat in Nonchalant, Cornflower. + Also available in Beech, Ebonized and Light Cherry finishes.



JR® Chair

Gentle curves and a scooped back add visual interest. Designed by Joe Ricchio. Shown with upholstered seat in Field Day, Sand in Light Cherry finish. + Also available in Beech, Burnt Walnut and Ebonized finishes.



Sprite Chair

Organically inspired molded plywood, the simple Sprite chair form is sure to complement any environment. Stacks 8-high. Designed by Ross Lovegrove. Shown in Maple.

ENDURING DESIGN AND CRAFTSMANSHIP

Knoll wood side chairs use construction techniques your grandfather would appreciate—dowel pins, mortise and tenon construction, and carefully applied finishes. All Beech wood chairs shown here—Krusin, JR and Ricchio—can be delivered in just four weeks in your choice of Beech, Light Cherry, Burnt Walnut and Ebonized finishes.



Assembly spaces can adapt to formal meetings, presentations or training with reconfigurable tables.

Enclosed spaces offer greater separation for longer meetings.

Refuge spaces nearby provide comfortable spots for a private phone call or meeting for two.


Delineated open spaces with Interpole or convenient storage.

Team meeting space allows groups to get together as needed.



Essential Spaces for a **Variety of Work**

Open, collaborative and social workspaces provide just the right environment to bring people together and spark creativity. From community gathering areas to quiet places to focus, activity spaces let people choose how they work, meet and interact.



Refuge spaces allow people to concentrate or take a quiet moment.

Enclaves foster collaboration by bringing people and technology together near primary workspaces.



A quiet get-away

- Designed for one or two people at a time
- Allow for uninterrupted or confidential work by adding walls or separating from the primary work area

1 Open Plan Refuge

A comfortable, higher-back lounge chair provides a change of posture and a sense of privacy in the open plan.

> Jehs+Laub lounge chair; KnollExtra Power Cube

2 Phone Booth

A low side table and chair add up to a quiet escape for a private phone call.

> Krusin lounge chair; Saarinen low table

3 Extra Small Meeting Room

A technology-enabled space allows users to conduct conference calls in comfortable lounge seating.

> D'Urso swivel lounge chair; D'Urso low table; Interpole; Sapper Monitor Arm

4 Touchdown Station

A table and ergonomic chair, plus technology support and task lighting, create a space to get away for focused work.

> Antenna Workspaces desk; ReGeneration by Knoll chair; Sapper Monitor Arm; Copeland light

5 Two-Person Videoconference

Flexible seating around a table and access to technology allow people to connect virtually without distracting others.

> Propeller table; MultiGeneration by Knoll stacking chair; Sapper Monitor Arm



Ideal for small get-togethers

- Designed for groups of three or four people
- Minimize interruptions and encourage shared work through implied boundaries
- Provide ready access to technology to help users share updates and ideas

1 Private Height-Adjustable Enclave

A user-adjustable space with wall display becomes a quiet environment for shared work.

> ReGeneration by Knoll chair; Reff Profiles height-adjustable sliding table; Reff Profiles credenza; Sapper 50 Sleeve arm

2 Enclosed Enclave

A casual space for meeting and planning, this inviting lounge enclave provides a measure of privacy for small groups.

> Toboggan Pull Up table and seat; Krusin side table

3 Open Plan Enclave

This informal space draws people together for spontaneous brainstorming and decision making.

> Antenna Simple table; MultiGeneration by Knoll stacking chair; Calibre storage

4 Technology-Rich Enclave

A video monitor and multi-user power supply equip an open plan, small-group meeting space.

> MultiGeneration by Knoll hybrid chair; Antenna Workspaces Y-Base table; Interpole; Sapper 50 Sleeve arm; KnollExtra Power Disc

5 Open Plan Enclave

KnollExtra Power Cube with writable markerboard surface establishes the center of activity in an informal open enclave.

> Scribe mobile markerboard; KnollExtra Power Cube; Spark Series lounge chair

1



2





COLLABORATIVE TABLES



Saarinen Table

Available in 35¾", 42¼", 47¼" diameters and 96" oval. 28¼"H. Designed by Eero Saarinen.

Shown with Bright White laminate top and White painted base.



Antenna Workspaces Round Table

Available in 42", 48" diameters and 18½", 24½", 28½" heights. Designed by Masamichi Udagawa and Sigi Moeslinger.

Shown with Bright White laminate top and Black painted legs.



Antenna Workspaces Y-Base Table

It's easy to manage and minimize cords by channeling them through this Y-Base table structure. Track shaped available in 72", 84"W, 36", 42"D; 28½", 36½" heights. Designed by Masamichi Udagawa and Sigi Moeslinger.

Shown with Walnut laminate top with grommets and Silver painted legs.



Antenna Simple Table **NEW**

Variety of rectangular, round, square, bullet and track top shapes in heights from 25⅝" to 31½". Available in 36", 42", 48" diameters, and rectangular top shapes in widths every six inches from 36" to 84"; 18", 24", 27", 30", 36"D. Designed by Masamichi Udagawa and Sigi Moeslinger.

Shown with White laminate top and Black painted legs.



Antenna Workspaces Table

Available in 30", 36", 42" and 48" widths and 18½", and 24½" and 28½" heights. Designed by Masamichi Udagawa and Sigi Moeslinger.

Shown with Walnut laminate top and Black painted legs.



KnollExtra Power Cube

A recharging hub with a writable surface for casual collaboration. Available hard-wired, cord-set, and non-powered in 24"x24" or 36"x36", 13"H, markerboard finish. USB option; magnetic marker cup available.

Shown hard-wired with integrated power.



Dividends Horizon X-Base Table

Available in 30", 36", 42", 48" widths and 17", 21", 28", 36", 42" heights with square, rounded square, or round top shapes.

Shown with Walnut laminate top and Silver painted base.



AutoStrada Round Table

Available in 36", 42" and 48" diameters, and 27", 28⅞" and 30⅞" leg heights.

Shown with 42" Black laminate top and diamond shaped straight legs in Anodized Aluminum.



Upstart Table ■

Available in a variety of top shapes including oval, tripod, wiper, half round, and round.

Shown with 66" W oval, 25"-30"H with Bright White top and Medium Grey painted legs.



ENGAGE WITH TECHNOLOGY

Knowing that new technologies continue to rapidly emerge, Knoll furniture is designed to be a neutral platform. That means our products can support today's technology and can adapt to whatever your business requires tomorrow.



D'Urso Work Table

Available in square, round and racetrack top shapes, 27½"H. Square 48", 54", 60"W. Round 42", 48", 54", 60" diameters. Racetrack 72", 84", 96"W.

Shown with 48"W Bright White laminate top with Black edgeband and Polished Chrome legs.

! Requires additional lead time.



Reff Profiles Sliding Table

Available in round, soft square and soft rectangular top shapes, 26½" and 28¾" H. Round and soft square 36" and 42". Soft rectangular 30"x48" and 36"x54". Designed by Brian Graham.

Shown with 42" soft square Light Oak veneer top with Bright White painted base.

! Veneer may require additional lead time.

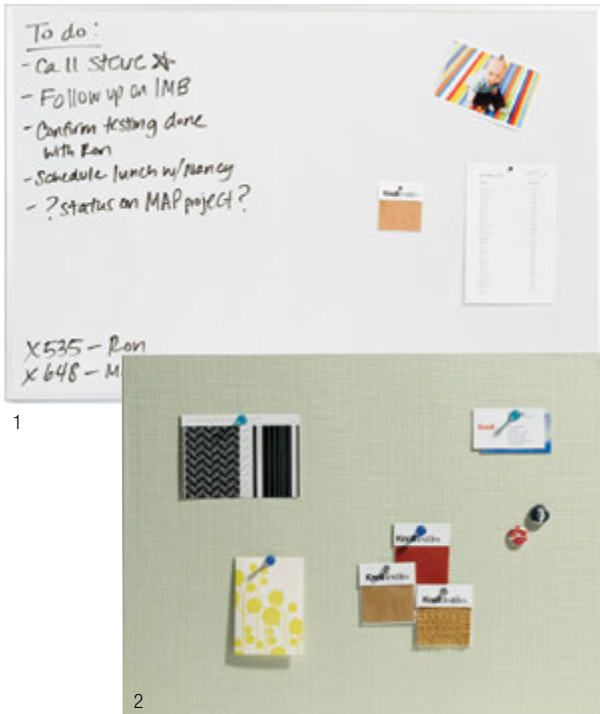


Reff Profiles Table with Column Legs

Available in round, square, rectangular and racetrack top shapes, 26½" and 28¾"H. Square 36", 42", 48". Round 42", 48". Rectangular and racetrack 36"x72", 42"x84", 48"x96". Designed by Brian Graham.

Shown with Black laminate top and Silver painted legs.

COMMUNICATION BOARDS



Communicate, capture and share. Incorporate communication boards into activity spaces so ideas—and opportunities—aren't lost.

1 Universal Marker Board

Available in 24", 30", 36", 42", 48"W; 18", 24", 30"H. Shown in 24"W, 18"H White porcelain with Silver frame. All Universal Marker Boards are magnetized.

2 Universal Fabric Board

Available in 24", 30", 36", 42", 48", 60"W; 14", 16", 18", 20", 24"H. Shown in 24"W, 18"H in Versatility, Chino fabric.

3 Scribe Mobile Marker Board

Available in 30", 36", 42", 48"W, with 54"H marker board area. Total height with legs 72". Shown 42"W with White laminate marker board surface.

- + Also available with marker tray and/or cup on one or both sides.
- + Ships with four markers and microfiber cleaning cloth.

4 Team Meeting Area

Scribe mobile marker board and Anchor credenza add function to this Antenna Simple table meeting area.

- > MultiGeneration by Knoll stacking chair

5 Interpole with Writeable Screen

Writeable screens mount between power pole slots. Available in 36", 42", 48", 54" and 60"W; 15", 24", 31½", 48", 64½"H. Shown 36"W, 64½"H with Opaque whiteboard glass and Anodized Aluminum textured poles.

- > MultiGeneration by Knoll hybrid chair; Antenna Workspace Y-Base table

4



5



TEAM MEETING



Get everyone on the same page

- Provide open or enclosed spaces for larger groups of four to eight people
- Make the space more responsive with flexible seating and moveable tables
- Enhance usability with technology access, whiteboards and visual display

1 LSM Conference Space

A central table with pure lines establishes a refined team space. Designed by Debra Lehman-Smith and Ron Fiegenschuh.

> Life chair; Calibre storage

2 Spontaneous Meeting Space

Interpole storage and writeable screens delineate space for team members to sit down and interact around an Antenna Workspaces Y-Base table.

> MultiGeneration by Knoll hybrid chair





3 Creative Brainstorm Space

A variety of freestanding and moveable elements can be arranged at will, inspiring creativity and big ideas.

- > Toboggan chair desk; Scribe mobile marker board; Interpole

4 Team Meeting

Adjacent to team workspace, this exclusive meeting area is always available for work sessions and presentations.

- > Antenna Workspaces Big table; Calibre storage; MultiGeneration by Knoll hybrid chair; Generation by Knoll chair



Bring people and ideas together around a beautifully designed table that elevates the space.



Reff Profiles Table with 2x4 Legs

A mix of finishes draws attention to bold legs in this progressive design. Available in 36"x72" to 48"x96" in six-inch increments. Designed by Brian Graham.

Shown with 48"x96" Black laminate top with Silver painted legs.



Reff Profiles Table with 4x4 Legs

Geometrical lines draw attention to bold legs in this progressive design. Available in 36"x72" to 48"x96" in six-inch increments. Designed by Brian Graham.

Shown with 48"x96" Folkstone Grey laminate top with Bright White painted legs.



Propeller Rectangular Conference Table

Easy reconfiguration and clever wire management capable. Available in widths every six inches from 42" to 96"W, 42", 48", 60"D. Optional grommet(s) and Plexus for power and cable management/access. Designed by Emanuela Frattini.

Shown with White laminate top, flat edgeband and Anodized Aluminum legs.



Stromborg Rectangle Table

Signature X- and Y-shaped aluminum rails impart a subtle energy. Available in 36"x72". Designed by Daniel Stromborg.

Shown with White laminate top and Bright White painted steel legs.

! Requires additional lead time.



LSM Rectangular Conference Table

Refined lines and an intriguing juxtaposition of materials and finishes. Available in 96"x48", 108"x48", 120"x60", 180"x60". Designed by Debra Lehman-Smith and Ron Fiegenschuh.

Shown with White laminate top and Bright White painted legs.

! Requires additional lead time.



1966 Table

Developed to maintain its professionalism and good looks in outdoor environments. Available in 38"x60". Designed by Richard Schultz.

Shown with white porcelain enamel on steel top with white aluminum frame in weather resistant polyester powder coat finish.

! Requires additional lead time.



Antenna Workspaces Rectangular Desk

At the core of Antenna Workspaces design, the clean, pure table takes center stage. Available in widths every six inches from 36" to 96", 24", 27", 30", 36"D. Optional 15"W extension tops. Designed by Masamichi Udagawa and Sigi Moeslinger.

Shown with White laminate top including extensions, and Medium Grey painted legs.



Antenna Workspaces Y-Base Table

It's easy to manage and minimize cords by channeling them through this Y-Base table structure. Available in 72", 84"W, 36", 42"D; 28½", 36½"heights. Designed by Masamichi Udagawa and Sigi Moeslinger.

Shown with Walnut laminate top with grommets and Silver painted legs.



Antenna Workspaces Racetrack Table

Floating above tubular steel rails, this light-scale table offers remarkable strength and style. Available in 36"x72", 42"x84", 48"x 96" track shape tops. Designed by Masamichi Udagawa and Sigi Moeslinger.

Shown with Walnut laminate top and Bright White painted legs.



Antenna Simple Table **NEW**

Great design and versatility come together in a deceptively simple form. Plan independent or linked, with optional power capacity. Available in rectangular, round, square, bullet and track top shapes; 36", 42", 48" diameters, and rectangular top shapes in widths every six inches from 36" to 84", 18", 24", 27", 30", 36"D. Designed by Masamichi Udagawa and Sigi Moeslinger.

Shown with Black laminate top and Folkstone Grey painted legs.



Upstart Table ■

Maximum flexibility combined with the ultimate in simplicity. Available in a variety of shapes including oval, tripod, wiper, half round, and round.

Shown with 66"W oval, 25"-30"H with Medium Grey laminate top and Folkstone Grey painted legs.



Dividends Horizon Y-Leg Conference Table

Contemporary and architectural, for a refined conference space. Available in rectangular or racetrack top shapes in widths every six inches from 60" to 96"W, 24", 30", 36"D. 42"D also available in 84", 90", 96"W only. Designed by Jeffrey Bennett and Nicholas Dodziuk with David Noel.

Shown with Walnut laminate racetrack top and Silver painted base.

Notepads. Napkins. Dry-erase markers. Storage completes meeting spaces with immediate access to the little things that keep meetings running smoothly.



Reff Profiles Service Height Credenza

A taller top surface holds refreshments and holds meeting materials. A/V equipment configuration available.



Reff Profiles Credenza

Supplies and team materials are close by, in storage that complements the center table.



Template Credenza

Low and sleek storage adds welcome space for materials.



Anchor Credenza

Various open and closed configurations maximize storage options within a single unit.



Propeller Credenza

A sophisticated, multi-functional addition to any meeting space.



Antenna Workspaces Cabinet

Clean, streamlined cabinet stores essential meeting materials.



Template Work Wall

In a nearly limitless array of sizes and configurations, streamlined storage outlines a casual, functional meeting space.



Reff Profiles Bookcase

Open storage holds reference materials ready for team use. Available with dual-function sliding markerboard door.



Anchor Open Lockers

Maximize shared space and make mobile workers feel at home. Available with doors and digital keypad lock.



1 Antenna Workspaces Meeting Storage

A sleek storage cabinet houses meeting resources and provides a surface for refreshments.

> Antenna Workspaces storage; Antenna Workspaces Big table; MultiGeneration by Knoll hybrid chair

2 Interpole Meeting Space

Interpole with storage access on both sides establishes boundaries that create a cozy meeting space.

> Interpole; Antenna Workspaces table desk, Saarinen Executive Armless Chair

! Chrome legs require additional lead time.



1



Always conference-ready

- Ideal for larger meetings, presentations and training
- Minimize disruption within and outside the meeting by enclosing spaces or setting them apart from workstations
- Aid information sharing with ample display surfaces and video monitors
- Provide space for refreshments and materials by including tables or credenzas

1 Presentation Space

Moveable Antenna Simple tables, complemented by stackable MultiGeneration by Knoll chairs, are ideal for nimble gatherings.

2 Training Room

Wall-mounted whiteboards and video displays support the exchange of ideas. Propeller tables can be quickly arranged to suit any training configuration.

3 Lecture Space

CHIP chairs look good from any vantage point. Practical, too—stack them away when they're not in use.



2



3



Move them, connect them—
Knoll training tables help
create the right setting for
your content and audience.

1 Training Classroom

Training rooms benefit from a variety of display surfaces, such as a large Universal Marker Board. Propeller tables can be quickly placed in any arrangement.

> ReGeneration by Knoll chair; Scribe mobile marker board

2 Presentation Space

Easily reconfigurable, Antenna Simple tables feature ganging mechanisms and casters or glides, as well as integrated cable management.

> MultiGeneration by Knoll stacking chair

3 Team Breakout

Upstart tables can be configured for a group focused on a shared task, with a secondary setup for additional attendees.

> CHIP chair; Copeland light

2



3



Get social

- Draw people together in commons, cafés and casual spaces
- Offer variety and choice with a range of informal spaces
- Reflect your company's culture and personality through design, color and material

1 Community Storage

Lounge seating fosters social interaction, with shared reference materials and resources housed nearby.

- > Template storage; k. lounge bench and stool; KnollExtra Power Cube and magnetic accessory cup

2 Informal Lounge

A variety of casual seating and table heights allows users to choose the setting that suits their immediate needs.

- > Interpole Hub; Toboggan Pull Up table; D'Urso swivel lounge chair; Saarinen side table

3 Commons

Open common areas bring people from different teams and departments together, offering a fresh context for collaboration.

- > MultiGeneration by Knoll stacking chair; Dividends Horizon X-Base table

4 Drop-in Space

k. lounge soft seating invites you to sit comfortably—even if only for a minute. Unassigned lockers stow coats, shoes and personal items.

- > Toboggan Pull Up table; Anchor lockers







Important things can happen over coffee or lunch—even if that’s just taking a moment to refresh during a busy day.



1966 Dining Table

Modern and multi-functional, bringing solid design to outdoor furniture. Available in 38"x38"D. Designed by Richard Schultz. Shown with white porcelain enamel on steel top with white aluminum frame in weather resistant polyester powder coat finish.

! Requires additional lead time.



Propeller Column Base Table

Simple in form with a range of sizes and configurations. Available in square or round top shapes. Round in 42", 48" diameters. Square in 30", 36", 42", 48"W. Designed by Emanuela Frattini.

Shown with Natural Maple laminate top and Aluminum base.



Dividends Horizon X-Base Table

Encourage social interaction while complementing the overall design of the space. Available in round, square and rounded square tops, 30", 36" and 42"W. Designed by Jeffrey Bennett and Nicholas Dodziuk with David Noel. Shown with Natural Maple laminate and Silver painted base.



Antenna Simple Table **NEW**

A versatile, neutral design lets diners pull up a chair from any direction. Variety of rectangular, round, square, bullet and track top shapes; available in 36", 42", 48" diameters, and rectangular tops in widths every six inches from 36" to 84"; 18", 24", 27", 30", 36"D. Designed by Masamichi Udagawa and Sigi Moeslinger.

Shown with White laminate top and Black painted legs.



Antenna Workspaces Y-Base Table

Available in 36", 42" diameters and 24½", 28½", 36½" heights. Designed by Masamichi Udagawa and Sigi Moeslinger.

Shown with Warm Ash laminate top and White painted base.



Saarinen Table

A single, elegant base transforms the way we think about tables. Available in round and oval top shapes. Round in 35¾", 42¼", 47¼"W. Oval in 96"W. Designed by Eero Saarinen.

Shown with White laminate top and Bright White painted base.



Stromborg Table

Signature X- and Y-shaped aluminum rails impart a subtle energy. Available 42"x42". Designed by Daniel Stromborg.

Shown with White outdoor laminate top and Bright White painted steel legs.

! Requires additional lead time.



Reff Profiles Sliding Table

Stunning in its symmetry, sliding into space. Available in 30", 36" and 42"W. Designed by Brian Graham.

Shown with Black laminate top and White painted base.



1966 Bar Height Dining Table

42"H Table supporting casual interaction indoors and out. Available in 38"x38". Designed by Richard Schultz.

Shown with white porcelain enamel on steel top with white aluminum frame in weather resistant polyester powder coat finish.

! Requires additional lead time.



Antenna Workspaces Y-Base Standing Height Table

36¾"H Standing height table ideal for quick exchanges on the go. Available in 36"W. Masamichi Udagawa and Sigi Moeslinger.

Shown with White laminate top and Black painted base.



Dividends Horizon X-Base Standing Height Table

42" Standing height complements the traditional X-Base table. Available in round, square and rounded square tops, 30", 36" and 42"W. Designed by Jeffrey Bennett and Nicholas Dodziuk with David Noel.

Shown with White laminate and Medium Grey painted base.

Instantly inject color and personality into your space with a bold, thoughtfully designed multi-use chair.



Sprite Stacking Chair

Organically inspired molded plywood, the Sprite armless chair stacks 8-high on the floor. Designed by Ross Lovegrove.

Shown with White, Maple, Black seat and Polished Chrome finish.



X3 Stacking Chair

Highly graphic and engaging, the X3 armless chair stacks 8-high on the floor. Designed by Marco Maran.

Shown with Smoke and Polished Chrome finish.



Bertoia Side Chair

An icon in industrial wire. Designed by Harry Bertoia. Shown with upholstered seat cushion in Ricochet, Flame with Polished Chrome finish.



Bertoia Barstool NEW

Grace in an industrial material. 27½" seat height. Designed by Harry Bertoia.

Shown with upholstered seat cushion in Ricochet, Teal with Polished Chrome finish.

! Requires additional lead time.



Gigi Stacking Chair

A light, distinctive profile stacks 4-high on floor. Designed by Marco Maran.

Shown with Black shell and Polished Chrome finish.



Washington Skin Nylon Chair

The cantilevered design establishes a play between propping and balancing for indoor or outdoor use. Designed by David Adjaye.

Shown with Red finish.

! Requires additional lead time.



Spark Series Side Chair

Bright colors and a unique personality add energy to any indoor or outdoor space. Spark stacks 6-high on the floor, 10-high on dolly. Designed by Don Chadwick.

Shown with Red finish.

+ Spark Lounge chair also available



1966 Dining Chair NEW

A modern classic built for indoor and outdoor use. Designed by Richard Schultz.

Shown armless with White mesh, strap with Choice White powder coat finish.

! Requires additional lead time.



Toboggan Chair Desk

Playful yet practical social seating. Designed by Masamichi Udagawa and Sigi Moeslinger.

Shown with White frame finish and White Oak veneer.



Toboggan Seat and Pull Up Table

Versatile, playful and practical social seating and surfaces. Designed by Masamichi Udagawa and Sigi Moeslinger.

Seat shown in Dark Red; Pull Up shown in Medium Grey.

+ Three-seat bench also available.



k. lounge Stool **NEW**

Comfortable, lightweight and easy to move, this upholstered seat fits in anywhere.

Shown in Heirloom Tomato.

+ 10 modular elements also available



MultiGeneration by Knoll Stacking Chair

Designed to encourage natural movement and free expression. Stacks 6-high on floor, 10-high on dolly. Designed by Formway Design.

Shown with Yellow, Grey, Off White, Dark Red shell with Metallic Grey painted finish.



MultiGeneration by Knoll Hybrid Chair

A unique design combines the responsiveness of a cantilevered form with the mobility of four-leg construction. Designed by Formway Design.

Shown with fixed arms and casters, in Silver frame finish with Yellow shell.



MultiGeneration by Knoll Tablet Arm Chair

Ready for training—or anything. Designed by Formway Design.

Shown with Off White shell and Silver painted finish including tablet arm, upholstered seat, book basket and glides.



Saarinen Executive Armless Chair

Timeless and versatile, one of Knoll's most popular designs. Designed by Eero Saarinen.

Shown in Ricochet, Flame with Polished Chrome legs.

+ Saarinen Executive Arm chair also available.



Olivares Aluminum Chair

A refined sculptural presence, The Olivares chair stacks 6-high on the floor, 10-high on dolly. Designed by Jonathan Olivares.

Shown with White, Sky Blue and Blue finish.

! Requires additional lead time.



CHIP Chair

Inspired by the curves of the sea in motion, CHIP stacks 12-high on the floor. Designed by Antti Kotilainen.

Shown with Birch shell and Polished Chrome finish.

Modern, formal or fun, coffee and side tables amplify your company's personality and brand.



Laccio Coffee Table

Quintessential 20th-century design. Available 53½"W, 19"D, 13½"H with Jet Black and Bright White laminate finish. Designed by Marcel Breuer.

Shown with White laminate top and Polished Chrome frame.

- + Side Table
21¾"W, 19"D, 17¾"H (not shown)



Toboggan Bench

Versatile, playful and practical, this two or three-seat bench does double-duty as a table or place to sit. Designed by Masamichi Udagawa and Sigi Moeslinger.

Shown with Grey Stained Oak finish.

- + Chair Desk also available.



Toboggan Pull Up Table

Pull the table up to a lounge chair as an impromptu worksurface or use it as a perch next to a workstation or power hub. Toboggan Pull Up table is just the right height to do both at 24½"H. Designed by Masamichi Udagawa and Sigi Moeslinger.

Shown in Medium Grey finish.



Krusin Square Coffee Table

Clean lines and faceted wood harmonize with a variety of settings. Available in Side, End, and Coffee Table. Coffee Table 36"W, 10" or 14"H in Beech, Burnt Walnut, Light Cherry, Ebonized finishes with matching veneer tops or clear glass.

Shown with 10"H Coffee Table in Burnt Walnut finish.

- + Square Side Table
Available in 18"W, and 18" or 22"H (not shown).
- + Square End Table
Available in 24"W, and 14"H (not shown).

! Requires additional lead time.



Barcelona Table

Pure compositional structure created for the 1929 Barcelona Exposition. Available 40"W, 40"D, 18½"H in Chrome finish with clear glass top, as shown. Designed by Ludwig Mies van der Rohe.

- + Barcelona chair and ottoman also available



Dividends Horizon Low X-Base Table

Encourage social interaction while complementing the overall design of the space. Available in round, square, and rounded square top shapes in 30", 36", 42", 48"W, 17", 21", 28", 36", 42"H. Designed by Jeffrey Bernett and Nicholas Dodziuk with David Noel.

Shown with 17"H, 42" diameter round White laminate top with Bright White painted base.



KnollExtra Power Cube

Lounge table, power access and whiteboard, all in one. White markerboard finish with four power ports on one or two sides. Available in Large 36"W, 36"D, 13"H (shown), and Small 24"W, 24"D, 13"H. Designed by Masamichi Udagawa and Sigi Moeslinger.

- + Available hard-wired, cord-set or non-powered. USB option and/or magnetic marker cup also available.



Saarinen Round Coffee Table

A single, elegant base transforms the way we think about tables. Available in round and oval coffee table shapes, as well as side tables. Designed by Eero Saarinen.

- + Saarinen Side Table
20"W, 20"H (not shown)
- + Saarinen Low Side Table
20"W, 13¾"H (not shown)
- + Saarinen Oval Coffee Table
42¼"W, 27½"D, 15¼"H (not shown)



Petal® Coffee Table

A 15"H outdoor table inspired by the delicacy of nature. Available in White laminate top and Bright White painted base, as shown. Designed by Richard Schultz.

- ! Requires additional lead time.



Stones Coffee Table

A subtle nod to the strength and beauty of the land. Molded from recycled polyethylene. Available 42"W, 29½"D, 11"H in Warm Red, Blue, Chartreuse and Silver finish. Designed by Maya Lin. Shown with Silver finish.

- + Stones seats also available



Antenna Workspaces Low Table

Stunning in its simplicity, with lean, low lines. Available 42"D; 18½", 24½", 28½"H. Designed by Masamichi Udagawa and Sigi Moeslinger.

Shown with 18½"H White laminate top with Bright White painted base.



1966 End Table

A modern approach to outdoor spaces. Available 18"W, 18"D, 15"H with White fiberglass top and Bright White painted base, as shown. Designed by Richard Schultz.

- ! Requires additional lead time.
- + Dining-height table
38"x38", 28"H (not shown)
- + Bar-height table
38"x38", 42"H (not shown)



Feel at home with lounge seating that signals hospitality and where creativity thrives.

1 Welcome Area

k. lounge soft seating provides a comfortable place to wait. Communal lockers with digital locks give workers a place to securely stow coats and umbrellas.

> Toboggan bench; Anchor lockers

2 Engaging Brainstorm Space

Unexpected colors and shapes suggest a place for fresh thinking and active participation.

> KnollExtra Power Cube; Bertioia Diamond chair; Stones; Suzanne Lounge

Classic Lounge

Ideal for a variety of applications, with classic detailing and clean lines, characteristic of Ludwig Mies van der Rohe designs.

> D'Urso coffee table, Copeland light

2



3





Suzanne Lounge Chair

Eastern and Western design meet in an armless lounge chair that's simple, bright and fun. Available in single or double lounge chair. Lounge chair 30½"W, 35"D, 27"H, 14½"H seat. Designed by Kazuhide Takahama.

! Requires additional lead time.



Suzanne Double Lounge Chair

Designed in 1965, this iconic, back-to-back configuration remains fresh today. Available in lounge chair or double lounge chair. Double lounge chair 30½"W, 59"D, 27"H, 14½"H seat. Designed by Kazuhide Takahama.

! Requires additional lead time.



k. lounge NEW

Eleven modular k. lounge elements add up to infinite possibilities for adding soft seating to any environment.

Add a seat back and Interpole screen, and k. lounge defines inviting activity spaces within the open plan.

> Interpole; Dividends Horizon X-Base table



Bench, two seat
52"W 19.5"D 17.25"H



Bench, three seat
78"W 19.5"D 17.25"H



60° Curved bench
37"W 37"D 17.25"H



Bench with back, single seat
26"W 28.25"D 26"H



Bench with back, two seat
52"W 28.25"D 26"H



Bench with back, three seat
78"W 28.25"D 26"H



60° Curved bench with back, inside radius
44.5"W 44.5"D 26"H



60° Curved bench with back, outside radius
42"W 42"D 26"H



Ottoman
28.25"W 28.25"D 17.25"H



Stool
16"W 16"D 17.25"H



Pouf
54"W 54"D 17.25"H

Create a signature ambiance with iconic designs that energize space.



Spark Series Lounge Chair

Bright colors and a unique personality add energy to any space, for indoor and outdoor use. Stacks 6-high on the floor. 25½"W, 25½"D, 17"H seat. Designed by Don Chadwick.

Shown with Dark Grey finish.

+ Side chair also available



Krusin Lounge Chair

An industrialized craft aesthetic modernizes the traditional chair. Available in Burnt Walnut, Beech, Light Cherry and Ebonized finish. 27"W, 25¾"D, 16"H seat. Designed by Marc Krusin.

Shown with Spinneybeck Volo Leather upholstered seat in Burnt Walnut finish.

+ Side chair also available



Bertoia Diamond Chair

A sculptural study in space, form and function. Available with Polished Chrome frame and upholstered seat or fully upholstered option. 33½"W, 28¼"D, 16½"H seat. Designed by Harry Bertoia.

Shown with upholstered seat cushion in Classic Bouclé, Cayenne and Polished Chrome frame.



D'Urso Swivel Lounge Chair

A playful balance between formality and whimsy. Available with adjustable seat, fixed height, and return to center mechanism. 32"W, 30"D, 17"-20"H adjustable seat. Designed by Joseph Paul D'Urso.

Shown with Polished Aluminum base and Hourglass, Spring upholstery.



D'Urso Contract Lounge Chair

A low profile combination of strict lines and soft upholstery. Available in Lounge chair and Small sofa size with Polished Chrome legs. Lounge chair 34"W, 36½"D, 17⅞"H seat. Small sofa (not shown) 74"W, 36½"D, 30½"H. Designed by Joseph Paul D'Urso.

Shown with upholstered Hourglass, Tangerine interior, Spinneybeck Volo surround and polished aluminum legs.

! Requires additional lead time.



Stones

A subtle nod to the strength and beauty of the land. Available in adult or child size, with or without weight in Silver, Warm Red, Blue, Chartreuse finish. Adult 27"W, 19"D, 15"H. Child 16"W, 12"D, 10"H. Designed by Maya Lin.

Shown with Blue and Chartreuse finish.

+ Coffee table also available



Barcelona Chair and Ottoman

Pure compositional structure created for the 1929 Barcelona Exposition. Available in Polished Chrome frame with Spinneybeck leather upholstery (available only). Chair 29½"W, 30"D, 30¼"H. Ottoman 25"W, 23¼"D, 14¾"H seat. Designed by Ludwig Mies van der Rohe.

+ Coffee table also available

Jehs+Laub Wire Base Lounge Chair and Ottoman

At ease in the workplace with a sleek profile and sculptural interior. Available in Pedestal Base and Wire Base versions as shown. Chair 33"W, 30"D, 14"H seat. Ottoman 31"W, 22½"D, 16¾"H. Designed by Markus Jehs and Jurgen Laub.

Shown with textured Black Wire Base upholstered in Classic Bouclé, Flax and contrasting Spinneybeck leather welt.

! Requires additional lead time.



Jehs+Laub Pedestal Base Lounge Chair and Ottoman

A sweeping form balanced atop a simple base. Available with Polished Aluminum frame with Spinneybeck leather upholstery. 33¼"W, 30½"D, 15"H seat. Designed by Markus Jehs and Jurgen Laub.

! Requires additional lead time.



Krefeld Lounge

Beautifully proportioned pieces with intimate scale and exceptional comfort. Available in Lounge chair, Sofa, Ottoman and Settee, as shown. Clear Oak or Wenge leg finish available only. Settee 57"W, 27"D, 30"H, 17¼"H seat. Designed by Ludwig Mies van der Rohe.

Settee shown in Spinneybeck Volo leather upholstery and Clear Oak leg finish.

- + Lounge Chair
32"W, 27"D, 30"H, 17"H seat (not shown)
- + Sofa
82"W, 27"D, 30"H, 17"H seat (not shown)
- + Ottoman
26"W, 20"D, 17"H (not shown)

! Requires additional lead time.

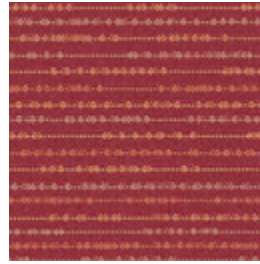
OPTIONS AND FINISHES

This selection of fabrics and leathers are those available for four-week delivery.* Visit knolltextiles.com and spinneybeck.com for color reference.

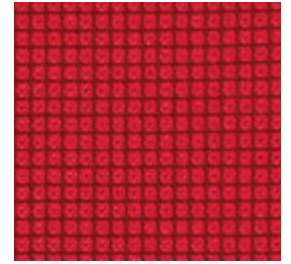
All standard KnollTextiles® fabrics and Spinneybeck® leathers are available for order through Knoll Essentials with their published standard lead times at the time of order.



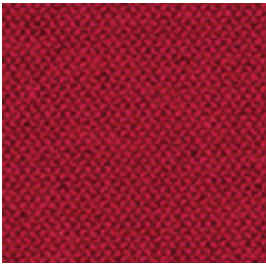
- Alignment K349** 🔥
- | | |
|--------------|-----------------|
| 1 Sand | 8 Indigo |
| 2 Straw | 9 Green Tea |
| 3 Earth | 10 Madder |
| 4 Paprika | 11 Blood Orange |
| 5 Aloe | 12 Harbor |
| 6 Flintstone | |
| 7 Aqua Shell | |



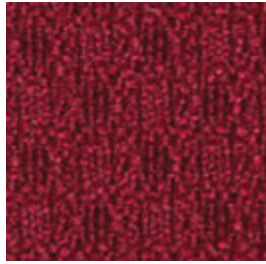
- Bocce K1255** 🔥
- | |
|----------|
| 2 Spring |
| 4 Picnic |
| 6 Harbor |
| 7 Spice |
| 8 Magic |



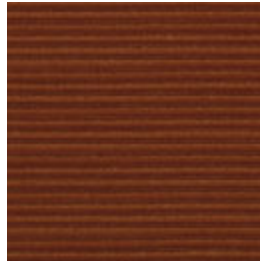
- Commuter Cloth K1778**
- | | |
|---------------|--------------|
| 1 White Cap | 9 Balloon |
| 2 Icicle | 10 Eve |
| 3 Cobblestone | 11 Boulevard |
| 4 Slicker | 12 Whistle |
| 5 Lime | 13 Puddle |
| 6 Cabana | |
| 7 Clementine | |
| 8 Sorbet | |



- Hourglass K1523**
- | | | |
|-------------|-------------|-----------|
| 1 Air | 12 Jelly | 23 Galaxy |
| 2 Gull | 13 Bluebird | 24 Misty |
| 3 Sandbar | 14 Liberty | 25 Iron |
| 4 Cork | 15 Indigo | 26 Wire |
| 5 Flax | 16 Spring | 27 Alley |
| 6 Beeswax | 17 Olive | 28 Caviar |
| 7 Tangerine | 18 Aegean | |
| 8 Sunshine | 19 Latte | |
| 9 Sizzle | 20 Almond | |
| 10 Flame | 21 Bark | |
| 11 Tart | 22 Mocha | |



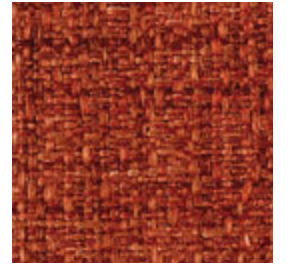
- Mariner K642** 🔥
- | |
|-------------|
| 5 Steel |
| 6 Black |
| 10 Wine |
| 14 Red |
| 29 Midnight |



- Monarch K1149** 🔥
- | | |
|-------------|---------------|
| 1 Ivory | 9 Brick |
| 3 Ginger | 12 Rainforest |
| 4 Carob | 16 Black |
| 6 Royal | |
| 7 Atlantic | |
| 8 Tangerine | |



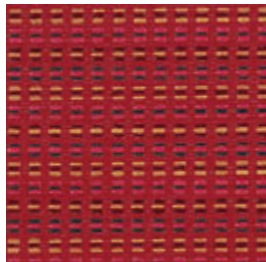
- Presto* K1000** 🔥
- | | |
|----------------|------------------|
| 1 Winter White | 10 Olive |
| 2 Sand | 11 Navy Blue |
| 3 Stone | 12 Clear Grey |
| 4 Saffron | 13 Charcoal Grey |
| 5 Spring Green | 14 Black Tie |
| 6 Blue Chip | |
| 7 Scarlet | |
| 8 Red Carpet | |
| 9 Beige | |
| Taupe | |



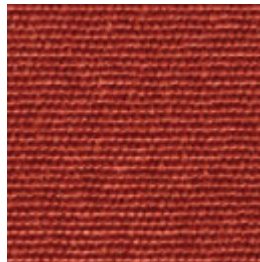
- Sonnet K1460**
- | | |
|------------|----------------|
| 1 Ivory | 9 Butterscotch |
| 2 Cane | 10 Cedar |
| 3 Gold | 11 Pumice |
| 4 Apple | 12 Tornado |
| 5 Kelp | |
| 6 Sierra | |
| 7 Denim | |
| 8 Mulberry | |



- Stacks K528** 🔥
- | |
|----------|
| 3 Tread |
| 5 Grape |
| 6 Wave |
| 7 Glass |
| 12 Brick |



- Belize K1165**
- | |
|---------------|
| 1 Sand Dollar |
| 2 Abalone |
| 3 Surf |
| 4 Palm |
| 5 Clown Fish |
| 6 Tropical |
| 8 Cove |



- Chroma K345** 🔥
- | | |
|-----------|---------------|
| 1 Quartz | 11 Navy |
| 3 Papaya | 14 Cyan |
| 4 Topaz | 15 Eucalyptus |
| 5 Cayenne | 16 Moss |
| 6 Cherry | 18 Lime |
| 7 Currant | 19 Silver |
| 8 Plum | 20 Gunmetal |
| 9 Mink | |
| 10 Onyx | |



- Journey K1806**
- | | |
|------------|-------------------|
| 1 Mitten | 11 Plum |
| 2 Jingle | 12 Forecast |
| 3 Beach | 13 Wavelength |
| 4 Twist | 14 Arcade |
| 5 Canyon | 15 Flight |
| 6 Allspice | 16 Chime |
| 7 Avocado | 17 Mushroom |
| 8 Aqua | 18 Dark Chocolate |
| 9 Hot Pink | |
| 10 Banner | |



- Lyric K698**
- | |
|----------------|
| 2 Golden Oldie |
| 3 Brass Band |
| 4 Quartet |
| 9 Amplify |
| 11 The Blues |



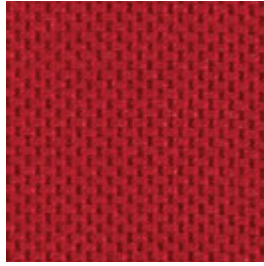
Night Life K181

- 1 Starstruck
- 4 Peanut Gallery
- 6 Paint the Town
- 7 Cinema
- 8 Noir



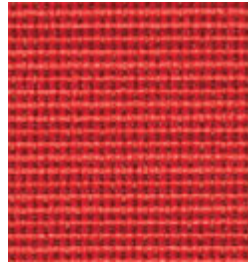
Nonchalant CR HC198 🔥

- 3 Cornflower
- 5 Ochre
- 8 Sienna
- 11 Indigo



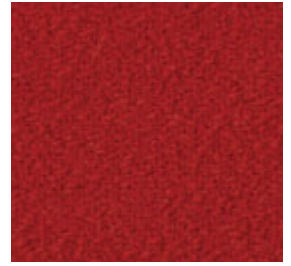
Ransom K1298

- | | |
|-----------|------------|
| 1 Captive | 8 Thrill |
| 2 Pardon | 9 Suspense |
| 3 Doyle | 10 Forfeit |
| 4 Loot | 11 Heist |
| 5 Forgery | 12 Spy |
| 6 Bail | 13 Holmes |
| 7 Motive | 14 Caper |



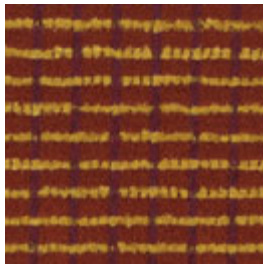
Ricochet K498 🔥

- | | |
|----------|-------------|
| 1 Oyster | 13 Teal |
| 3 Straw | 16 Midnight |
| 5 Topaz | 17 Ebony |
| 6 Flash | |
| 8 Flame | |



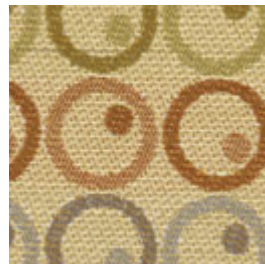
Classic Bouclé K162 🔥

- 7 Cayenne
- 12 Onyx
- 20 Neutral



Fox Trot CR HC777

- 1 Opal
- 3 Indigo
- 5 Sesame
- 8 Cayenne



Hula Hoop K753 🔥

- 3 Balloon
- 4 Chalkboard
- 7 At Night



Sequin CR HC1009 🔥

- | | |
|-------------|------------------|
| 1 Rosewater | 6 Tortoise Shell |
| 2 Canary | 8 Sapphire |
| 4 Bamboo | 10 Poppy |



Zari CR HC1008 🔥

- | | |
|-------------|-------------|
| 1 Gem | 6 Tiger Eye |
| 2 Facets | 7 Onyx |
| 3 Fountain | 8 Batik |
| 4 Lotus | 9 Charm |
| 5 Butterfly | 10 Madras |

🔥 Cal 133 approved on some office seating. See seating matrix to confirm.

* Presto is a base-grade fabric on Essentials Work Chairs™ and Moment™ chair

CR Fabrics Nonchalant, Fox Trot, Sequin and Zari are made with Crypton®, a stain, moisture and bacteria resistant barrier. Finishes shown are here for reference only. Consult a Knoll dealer for an actual sample. Always check with textile approvals on seating.

VINYL AND LEATHER UPHOLSTERY

Leather Grade T



**VZ Spinneybeck®
Vicenza Leather**

31 colorways
VZBLK ■

Leather Grade U



**VO Spinneybeck®
Volo Leather**

56 colorways

Vinyl

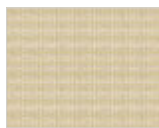


K242 Vinyl

10 colorways
13, 17, 21 ■

PANEL FABRICS

Grade 10



**W692
Growth Spurt**



**W432
Versatility**



**W693
Symbolic Details**



**W1077
Element**



**W1360
Annex**

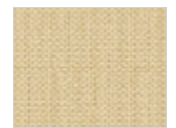


**W351
Foundation**

Grade 20

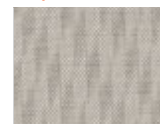


**W1620
Nematic II**



**W884A
Reflect**

Propeller® Screen Fabric



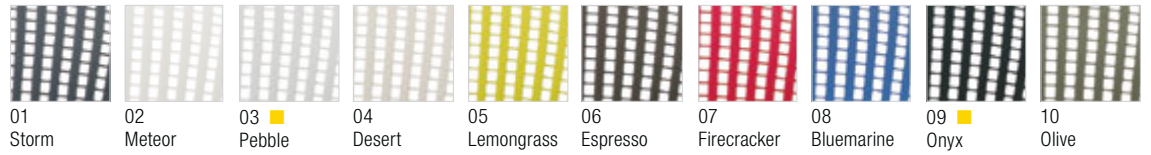
Granite Screen

Generation by Knoll®

Options

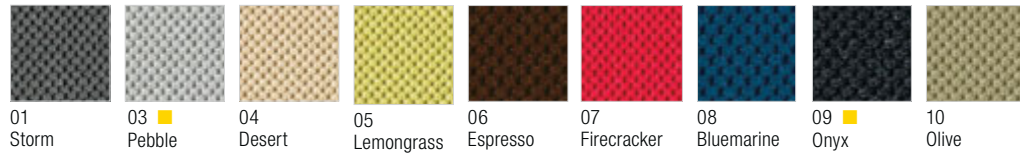
- Light or dark frame finish
- Polished aluminum base
- Three arm options or armless
- Lumbar support

Flex Back Net Colors



Base grade textile for Generation, ReGeneration and MultiGeneration chairs

Generation Fabric Colors

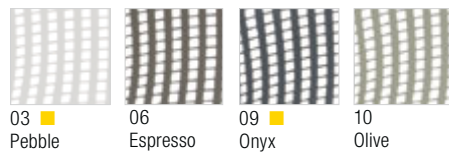


ReGeneration by Knoll®

Options

- Flex Back Net or fully upholstered
- Polished aluminum base
- Two arm options or armless
- Task and high task models
- Lumbar support

Flex Back Net Colors

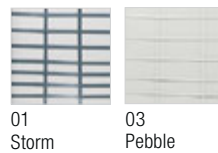


Remix®

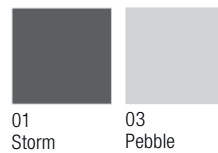
Options

- Work and high back models
- Polished aluminum base
- Four arm options or armless
- Lumbar support

Flex Net Matrix Colors

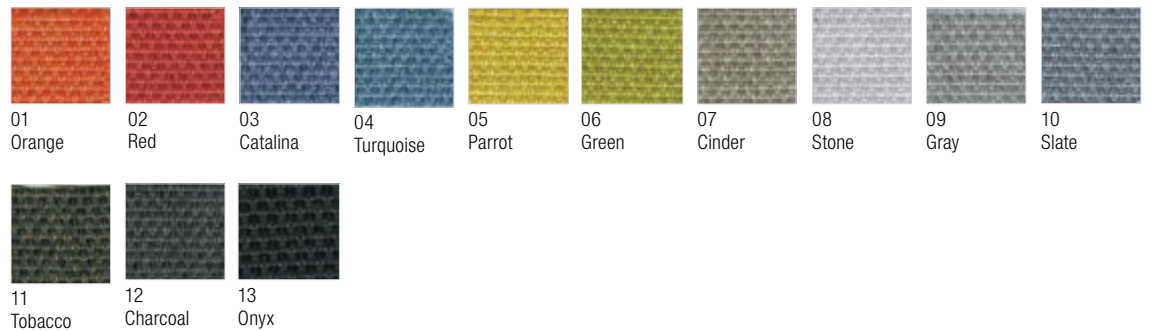


B-side Textile Colors



Base grade textile for Remix chairs

Delite Fabric Colors

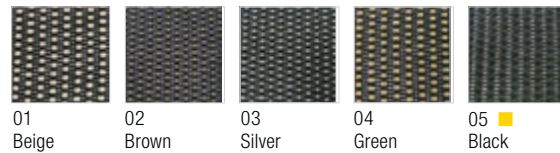


Chadwick®

Options

- Basic or tilt stop control
- Two arm options or armless
- Task and high task models

Chadwick Fabric Colors



Life®

Options

- Four base finishes
- Three arm options or armless
- Back topper
- Lumbar support
- Headrest

Life® Back Suspension Fabric (BSF) Colors



Life® Knitted Seat Topper (KST) Colors



EWC Sport™

Options

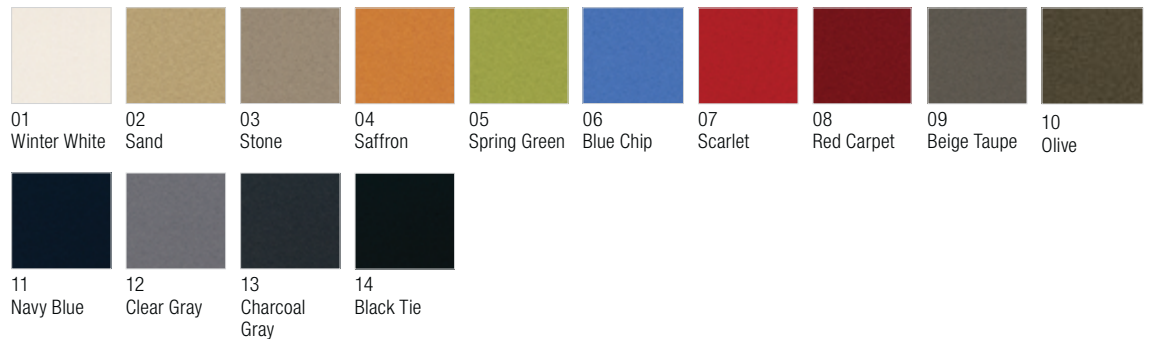
- Swivel tilt or synchronized tilt control
- Polished aluminum base
- Three arm options or armless

Accent Fabrics



Base grade textile for EWC and Moment chairs

Presto

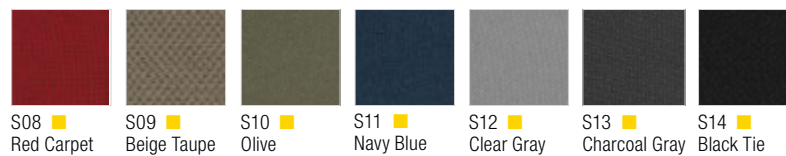


EWC Pro™

Options

- Swivel tilt or synchronized tilt control
- Polished aluminum base
- Three arm options or armless

Suspension Back Fabrics



EWC Tech™

Options

- Swivel tilt or synchronized tilt control
- Polished aluminum base
- Three arm options or armless

Radial

Options

- Basic or advanced synchronized control
- High performance arms or armless
- Task and high task models



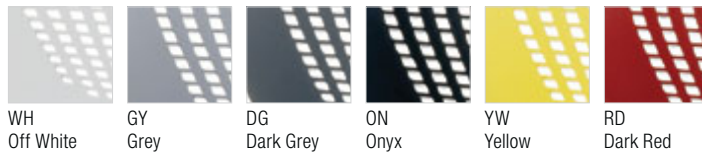
Speedway



MultiGeneration by Knoll®

- Options**
- Hybrid or stacking base models
 - Fixed arms or armless
 - Seat pad
 - Hard or soft casters or glides
 - Tablet arm and book basket

Shell Finishes

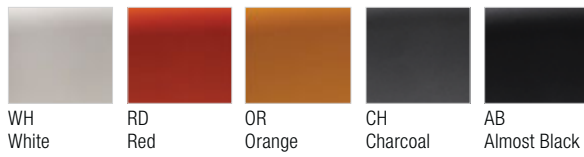


Frame Finishes



Moment™

Back Finishes



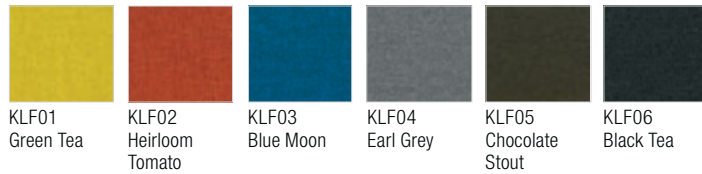
Frame Finishes



k.™ lounge

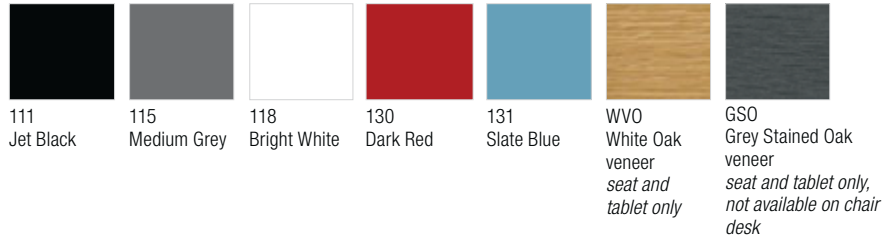
- Options**
- 11 modular elements

k. lounge Base Grade Fabric

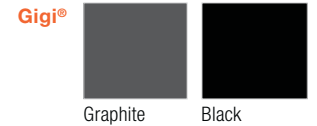


Toboggan®

Frame, Seat and Tablet Finishes



Spark® Series



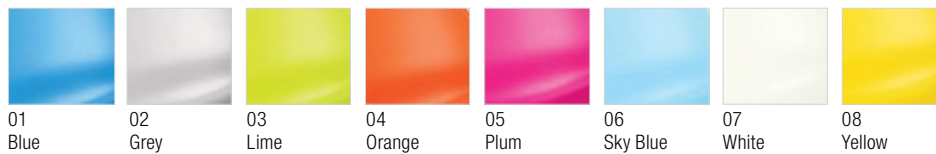
CHIP



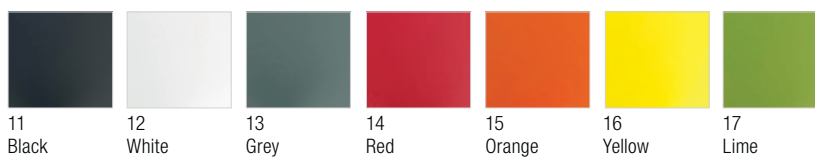
Sprite



Olivares Aluminum Chair

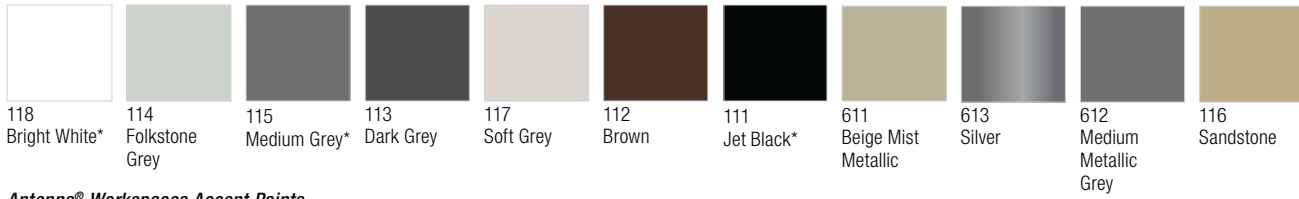


Washington Skin™



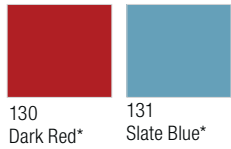
Paints

Core paints



Antenna® Workspaces Accent Paints

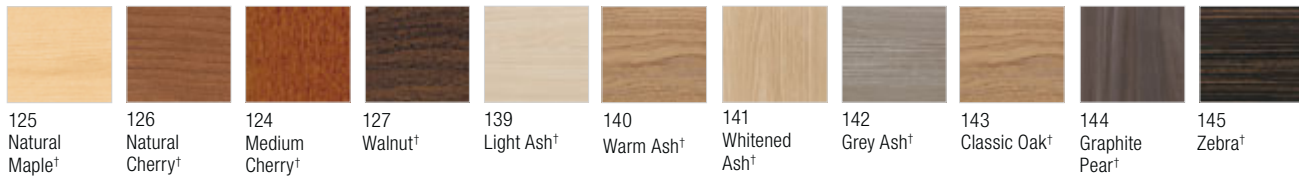
* Scribe mobile marker board finishes



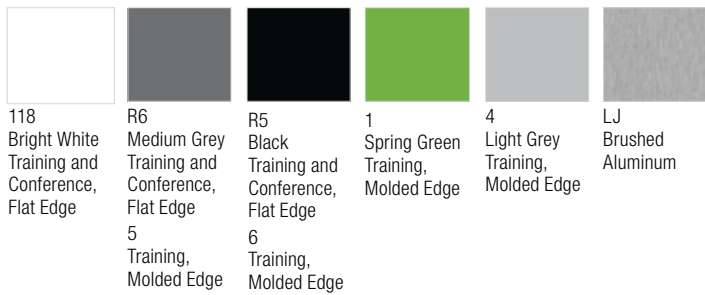
Laminates



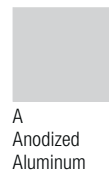
Woodgrain Laminates



Propeller® Edgebands



Propeller® Legs



Veneers ! V2 Available at four-week lead time on select products. Refer to Price List for qualifying products.

V1 Techwood Veneers



V2 Natural Veneers



† Available in coordinating edgeband. Refer to Price List for specific product availability. The finishes shown here are for reference only. Consult a Knoll dealer for an actual sample.

Open Plan

Antenna Workspaces
Published lead times apply to select products. Refer to published materials for details.

Antenna Workspaces Fence Frames, Crown Top Caps
Quantity limit 25 at four-week lead time.

Antenna Workspaces Powder Glass Screens
Quantity limit 10 at four-week lead time.

AutoStrada Frameless Glass, Trim
Quantity limit 10 at four-week lead time.

Currents Storage Cabinets
Quantity limit 10 at four-week lead time.

Tables

1966 Collection
KnollStudio® lead times apply.

Antenna Simple Tables
Published lead times may apply, consult Qualifying Products.

AutoStrada Tables
Quantity limit 25 at four-week lead time.

Barcelona Table
Quantity limit 4 at four-week lead time.

D'Urso
KnollStudio lead times apply.

Krusin Occasional Tables
KnollStudio lead times apply.

Laccio
Quantity limit 2 at four-week lead time.

LSM
KnollStudio lead times apply.

Power Cube, 36"
Quantity limit 5 at four-week lead time.

Propeller
Quantity limit 10 at four-week lead time.

Saarin Side and Coffee Tables
Quantity limit 2 at four-week lead time.

Saarin Dining Tables
Quantity limit 2 at four-week lead time.

Stromborg Tables
KnollStudio lead times apply.

Toboggan Pull Up Table
Standard lead times apply.

Tone Tables
Published lead times may apply, consult Qualifying Products.

Universal Adjustable Tables
Silver, Bright White and Black base finishes at four-week lead time.

Seating

Barcelona Lounge Seating
Quantity limit 4 at four-week lead time.

Bertoia Barstool
KnollStudio lead times apply.

Bertoia Side Chair
Quantity limit 10 at four-week lead time.

Bertoia Diamond Chair
Quantity limit 10 at four-week lead time.

CHIP
Quantity limit 25 at four-week lead time.

D'Urso Contract Lounge Collection
KnollStudio lead times apply.

D'Urso Swivel Lounge Chair
Quantity limit 2 at four-week lead time.

Gigi
Quantity limit 25 at four-week lead time.

Gigi Swivel
Quantity limit 10 at four-week lead time.

Jehs+Laub Lounge Chair and Ottoman
KnollStudio lead times apply.

JR
Quantity limit 25 at four-week lead time.

k. lounge
Published lead times may apply, consult Qualifying Products.

Krefeld Lounge
KnollStudio lead times apply.

Krusin Side and Lounge Chair
Quantity limit 10 at four-week lead time.

Olivares Aluminum Chair
KnollStudio lead times apply.

Saarin Executive, Arm
KnollStudio lead times apply.

Saarin Executive, Armless
Quantity limit 4 at four-week lead time.

Ricchio
Quantity limit 25 at four-week lead time.

Spark Series
Non-upholstered only.
Quantity limit 10 at four-week lead time.

Sprite
Quantity limit 10 at four-week lead time.

Stones
Quantity limit 5 at four-week lead time.

X3 Stacking
Quantity limit 10 at four-week lead time.

Toboggan Chair Desk, Seat and Bench
Standard lead times apply.

Washington Skin
KnollStudio lead times apply.

Accessories

Copeland light
Quantity limit 25 at four-week lead time.

Highwire
Quantity limit 25 at four-week lead time.

Sparrow light
Quantity limit 25 at four-week lead time.

T-Light
Quantity limit 25 at four-week lead time.

KnollTextiles® Fabrics and Spinneybeck® Leathers

All standard KnollTextiles fabrics and Spinneybeck® leathers are available for order through Knoll Essentials with their published lead times at the time of order. Only Essentials-approved fabrics and Spinneybeck leathers are available for four-week delivery.

Veneer

Four-week lead time applies to select V2 Natural veneer finishes only; otherwise published lead times apply to veneer finishes.

Refer to Price List for four-week qualifying products and veneer finishes.

Virtually all Knoll office systems, private offices, seating and storage are BIFMA level® 3 certified—the highest level of industry certification. In addition, all Knoll furniture is available with 100% recycled content fabric and, along with KnollExtra accessories, is GREENGUARD Indoor Air Quality Certified®, and can contribute to achieving LEED® credits.

Open Plan

Antenna Workspaces

BIFMA level 3 certified
GREENGUARD Indoor Air Quality and GREENGUARD for Children & SchoolsSM certified

Currents

BIFMA level 3 certified
GREENGUARD Indoor Air Quality Certified

Dividends Horizon

BIFMA level 3 certified
GREENGUARD Indoor Air Quality Certified

Morrison

BIFMA level 3 certified
GREENGUARD Indoor Air Quality Certified

Reff Profiles

BIFMA level 3 certified
GREENGUARD Indoor Air Quality Certified

Template

BIFMA level 3 certified
GREENGUARD Indoor Air Quality Certified
SMaRT® Sustainable Gold certified

Private Offices

Antenna Workspaces

BIFMA level 3 certified
GREENGUARD Indoor Air Quality and GREENGUARD for Children & Schools certified

AutoStrada

BIFMA level 3 certified
GREENGUARD Indoor Air Quality Certified

Dividends Horizon

BIFMA level 3 certified
GREENGUARD Indoor Air Quality Certified

Reff Profiles

BIFMA level 3 certified
GREENGUARD Indoor Air Quality Certified

Template

BIFMA level 3 certified
GREENGUARD Indoor Air Quality Certified
SMaRT Sustainable Gold certified

Seating

Chadwick

BIFMA level 3 certified
SMaRT Sustainable Gold certified
GREENGUARD Certified
GREENGUARD Gold certified

Essentials Work Chairs

BIFMA level 3 certified
GREENGUARD Certified
GREENGUARD Gold certified

Generation by Knoll

BIFMA level 3 certified
SMaRT Sustainable Platinum
GREENGUARD Certified
GREENGUARD Gold certified

Life

BIFMA level 3 certified
SMaRT Sustainable Gold
GREENGUARD Certified
GREENGUARD Gold certified

Moment

BIFMA level 3 certified
SMaRT Sustainable Gold certified
GREENGUARD Certified
GREENGUARD Gold certified

MultiGeneration by Knoll

BIFMA level 3 certified
SMaRT Sustainable Gold
GREENGUARD Certified
GREENGUARD Gold certified

ReGeneration by Knoll

BIFMA level 3 certified
SMaRT Sustainable Platinum
GREENGUARD Certified
GREENGUARD Gold certified

Remix

GREENGUARD Certified
GREENGUARD Gold certified
Pending SMaRT Sustainable Gold and BIFMA level 3 certification

RPM

BIFMA level 3 certified
GREENGUARD Certified
GREENGUARD Gold certified

Toboggan Chair Desk

BIFMA level 2 certified
GREENGUARD Certified
GREENGUARD Gold certified

KnollExtra Accessories

ACT I

GREENGUARD Indoor Air Quality Certified
100% recycled and recyclable FSC certified MDF board option

Copeland Light

GREENGUARD Indoor Air Quality Certified
Manufactured using 75% recycled material

LED Collection

Pending BIFMA level certification
GREENGUARD Indoor Air Quality Certified

Scribe Mobile Markerboard

GREENGUARD Indoor Air Quality Certified
Manufactured using FSC-certified MDF core.

Sapper Monitor Arm Collection

GREENGUARD Indoor Air Quality Certified
Manufactured with 95% recyclable material

Sapper XYZ

GREENGUARD Indoor Air Quality Certified
Manufactured with 63% recycled content, 85% recyclable material

Tables

Antenna Workspaces

BIFMA level 3 certified
GREENGUARD Indoor Air Quality Certified

AutoStrada

BIFMA level 3 certified
GREENGUARD Indoor Air Quality Certified

Dividends Horizon

BIFMA level 3 certified
GREENGUARD Indoor Air Quality Certified

Propeller

GREENGUARD Indoor Air Quality Certified

Upstart

BIFMA level 3 certified
GREENGUARD Indoor Air Quality Certified

Files and Storage

Anchor

GREENGUARD Indoor Air Quality Certified

Calibre

BIFMA level 3 certified
GREENGUARD Indoor Air Quality Certified
SMaRT Sustainable Gold certified

Series 2 Storage

BIFMA level 3 certified
GREENGUARD Indoor Air Quality Certified

Lounge Seating

Krusin Lounge

GREENGUARD Indoor Air Quality Certified

Spark Series

GREENGUARD for Children & Schools certified

Textiles

Many KnollTextiles fabrics contain recycled content or natural fiber and most are GREENGUARD Indoor Air Quality Certified. Visit knolltextiles.com for details.



Essentials to Inspire Your Best Work

From the open plan and private offices to activity spaces, we provide workplace essentials that inspire your people to do their best work. And with Knoll Essentials, most of these easy-to-order products can be in your hands in just four weeks! Reach out to your Knoll dealer to get started today.

knoll.com/essentials



Knoll[®]

1235 Water Street, East Greenville, PA 18041 800 445-5045 knoll.com

© 2015 Knoll, Inc. All rights reserved. B-ES15