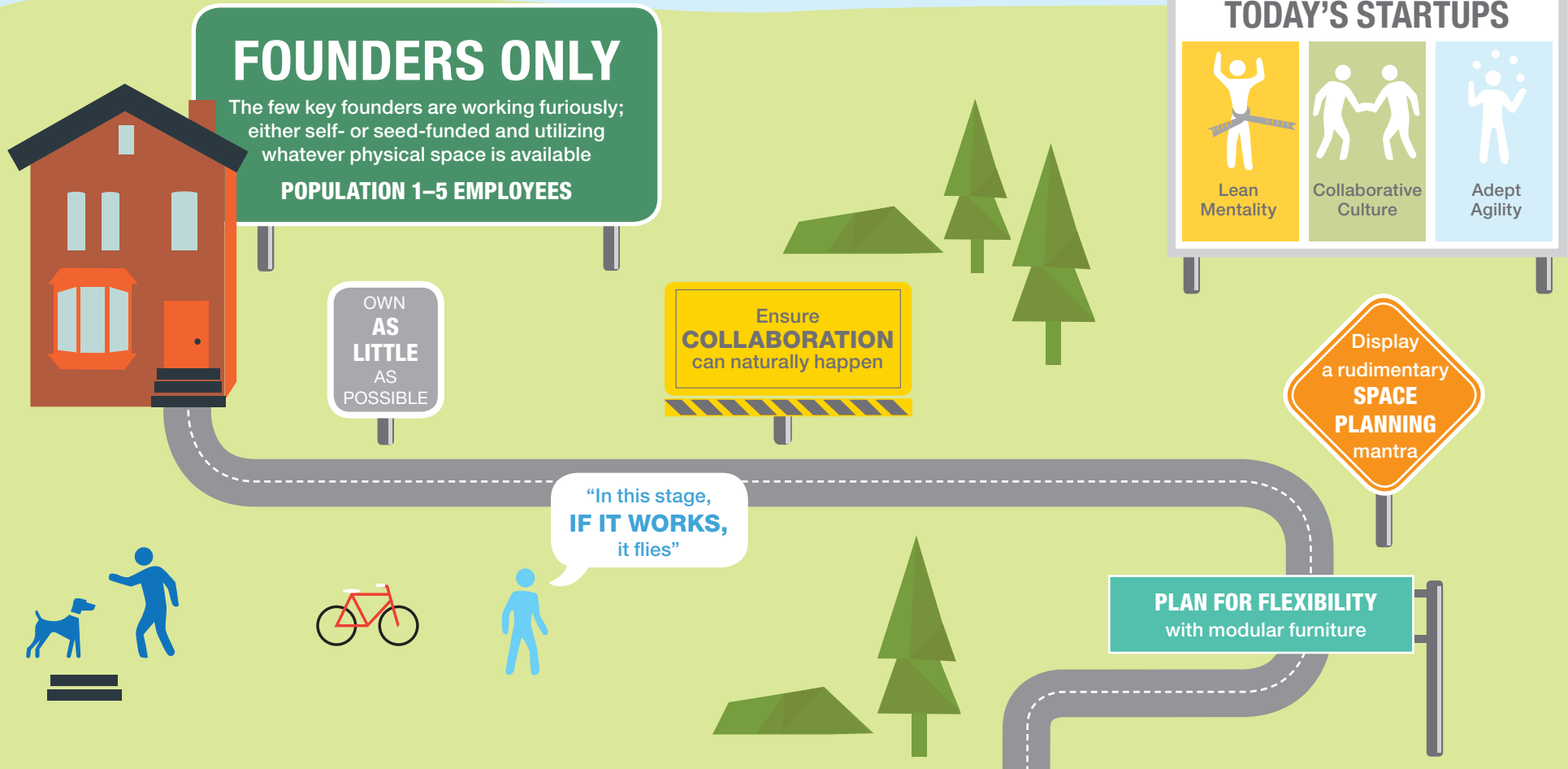
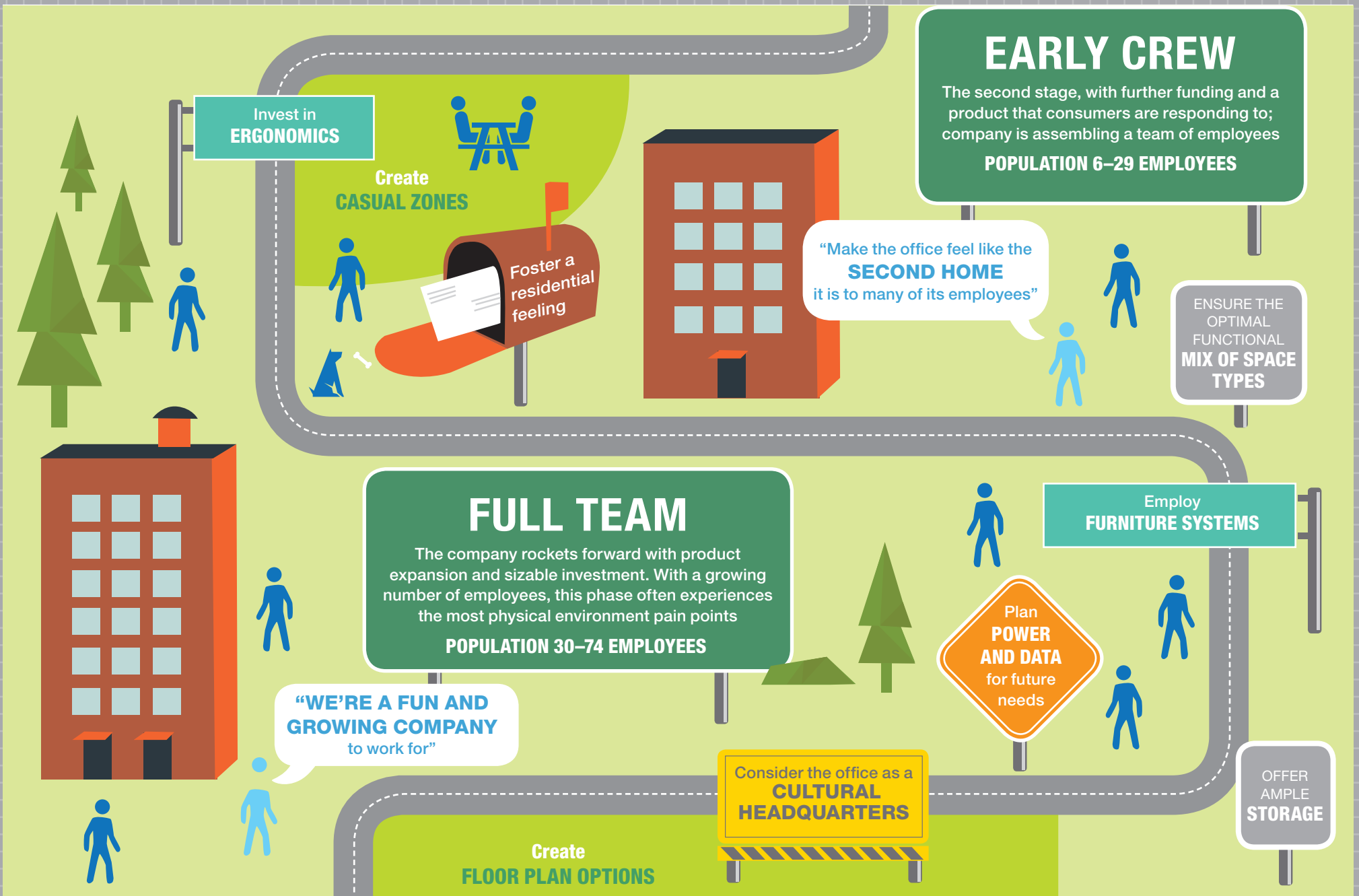


# THE STARTUP JOURNEY

## KEY ENVIRONMENT CONSIDERATIONS

For startups, creating the physical environment is rarely a perfect journey. But as companies scale there are important environmental considerations that exist to ensure the environment performs today and avoids pitfalls tomorrows.





### GREAT EXPANSION

The company matures with a departmentalized structure, multiple offices, the possibility of a public offering, and teams of employees

**POPULATION 75+ EMPLOYEES**

Standardize  
**FURNITURE  
SYSTEMS**

Foster  
**INTERACTION MOMENTS**  
and knowledge sharing

Create  
**LARGE GATHERING  
SPACES**

“The environment  
became about making  
**SPONTANEOUS  
INTERACTIONS**  
between people possible”

