

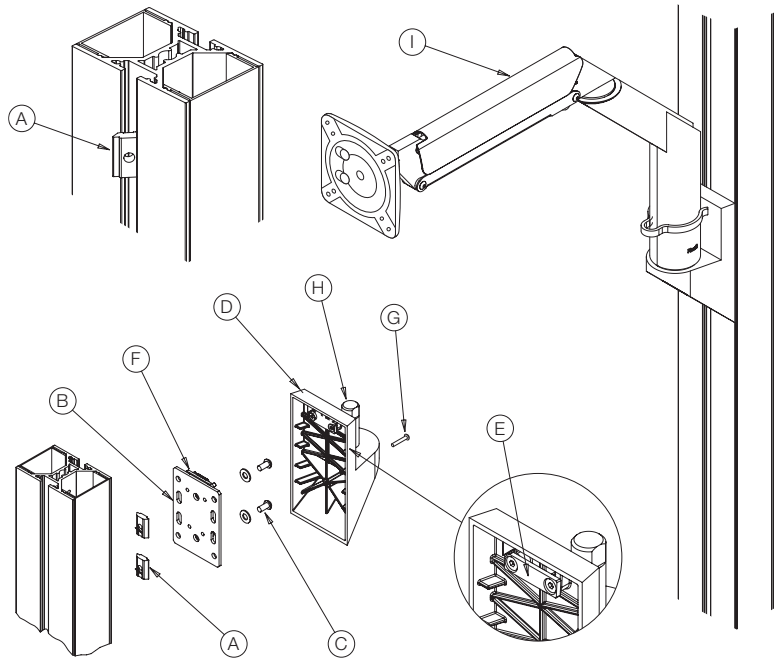
Sapper XYZ® Interpole Slot Mount: Attach Mount to Interpole and then Arm to Mount

Parts / Tools Needed

Allen wrenches (in inches)

- Slot nuts – M4 (A)
- Metric Allen wrench

1. Insert (2) slot nuts (A) into center channel of Interpole by pushing one side (long edge) down into the channel until the opposite side drops into the channel.
2. Slide slot nuts (A) to desired mounting location. Secure mount plate (B) with top hook (F) oriented up to slot nuts (A) with screws (C) and tighten securely.
3. Hang bracket (D) on mount plate (B) by engaging hanger bar (E) with top hook (F). Seat bracket (D) down fully and secure with screw (G).
4. Install Sapper XYZ monitor arm (I) by sliding the hole in the bottom of the post onto stem (H) of mounting bracket (D). Seat firmly.



For complete monitor arm installation instructions, visit exchange.knoll.com/products/knollextra_inst.jsp

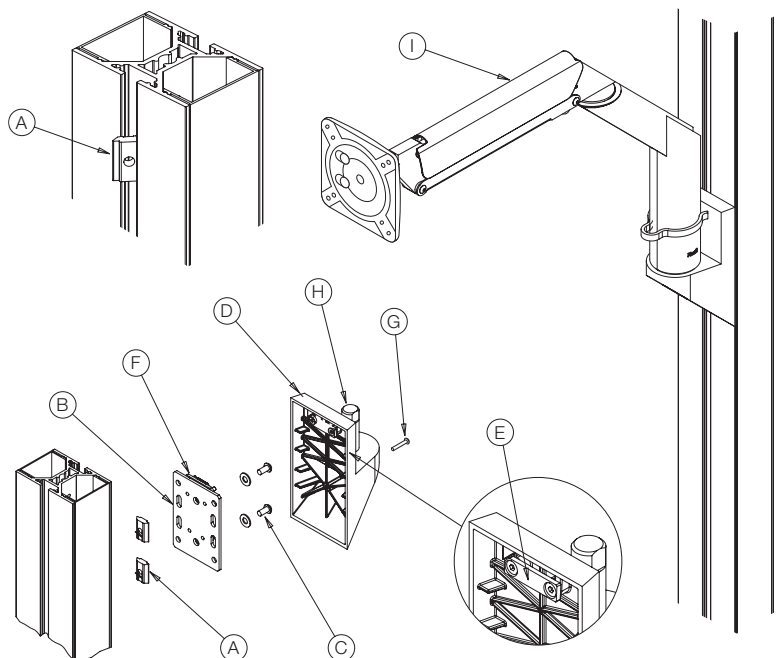
Sapper XYZ® Interpole Slot Mount: Attach Mount to Interpole and then Arm to Mount

Parts / Tools Needed

Allen wrenches (in inches)

- Slot nuts – M4 (A)
- Metric Allen wrench

1. Insert (2) slot nuts (A) into center channel of Interpole by pushing one side (long edge) down into the channel until the opposite side drops into the channel.
2. Slide slot nuts (A) to desired mounting location. Secure mount plate (B) with top hook (F) oriented up to slot nuts (A) with screws (C) and tighten securely.
3. Hang bracket (D) on mount plate (B) by engaging hanger bar (E) with top hook (F). Seat bracket (D) down fully and secure with screw (G).
4. Install Sapper XYZ monitor arm (I) by sliding the hole in the bottom of the post onto stem (H) of mounting bracket (D). Seat firmly.



For complete monitor arm installation instructions, visit exchange.knoll.com/products/knollextra_inst.jsp