

# Dividends Horizon® Split-Top Installation

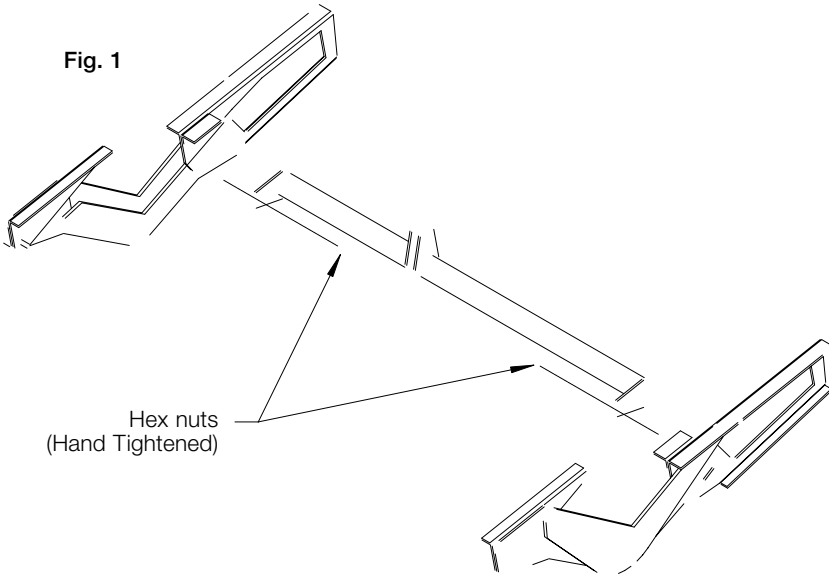
**Tools Needed:**

- ½" Wrench
- Phillips Screwdriver

1. Assemble Mechanism (Fig. 1)
2. Mount to table top (Bottom View) (Fig. 2)
3. Attach brake mechanism and actuator paddle. (10 screws)

continued...

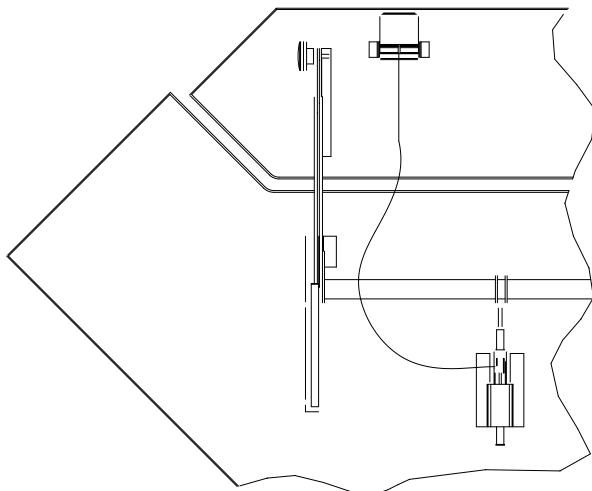
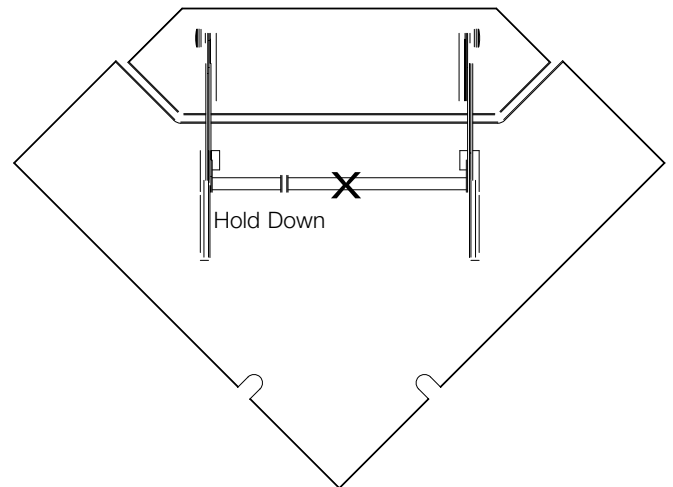
**Fig. 1**



**Fig. 2**

With tops laying finished side to floor, attach with screws provided. (20)

All 20 screws MUST be installed.



**Fig. 3**

- A. Depress paddle to loosen brake. Align holes of brake rod and cross tube arms. Attach with pin and 2 "E" clips provided
- B. Tighten hex nut with 1/2" wrench
- C. All 10 screws MUST be installed

## Dividends Horizon Split-Top Installation, continued

4. Check alignment of front and back worksurfaces, after mounting top to panel or table base (**Fig. 4**)
5. If tops are not aligned, loosen hex nuts. Move front surface to upper-most position. Re-tighten hex nuts while applying slight upward pressure on front worksurface. (**Fig. 5**)
6. Recheck alignment. If tops are still out of alignment, loosen one nut, raise or lower that side as needed and retighten nut.
7. Repeat for other side, if necessary.

Fig. 4

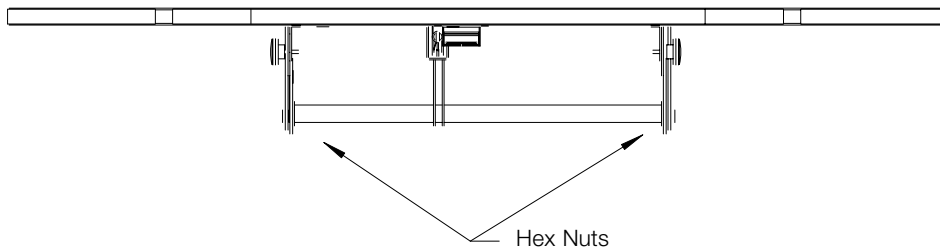
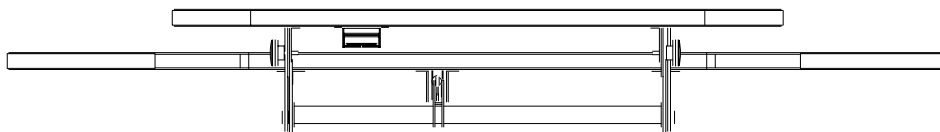


Fig. 5



### DISASSEMBLY FOR RECYCLING

#### Materials Identification and Segregation:

Where possible plastic components are marked with ASTM recycling codes. Use these codes to identify material type for recycling. Non-marked components should

be treated as mixed plastic. Ferrous metals can be identified using a small magnet for recycling. Non-ferrous metals should be separated and recycled separately.

**To disassemble product,** reverse the above installation steps.