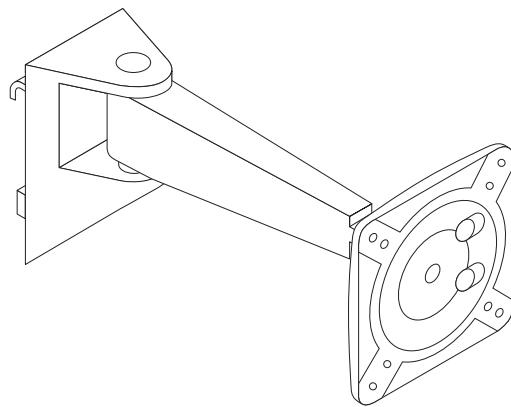
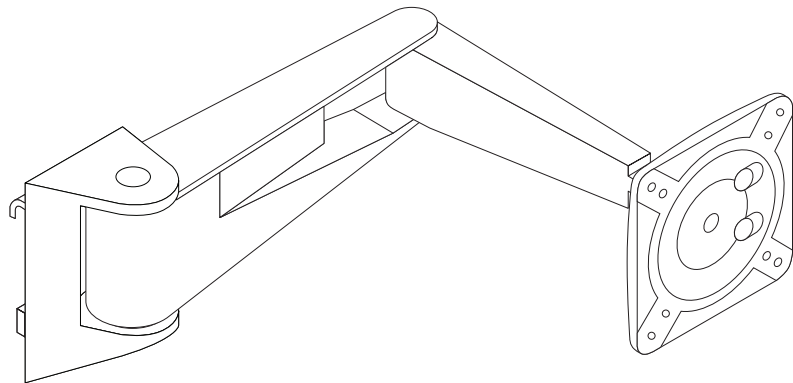


9/5/2012

Sapper™ Monitor Arm Collection
Direct Slat Wall Mount
(Standard and Compact Arms)
Installation Instructions



Step 1: Attach Monitor Plate (Movement Joint Included) to the Monitors or Television

Tools Needed • Screwdriver or Allen wrench

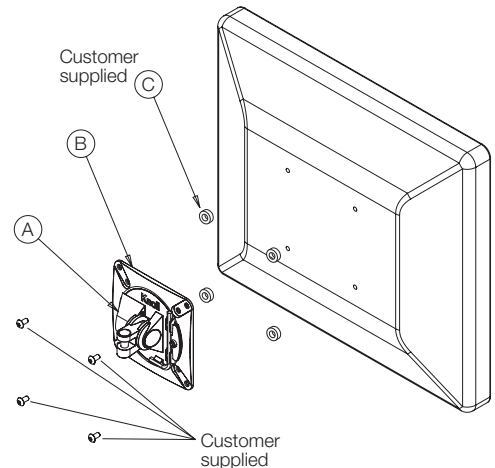
1. Remove monitor base and hardware, from the monitor. Retain all hardware.
2. Place movement joint (A) against back of monitor or television, with Knoll logo toward top of monitor and attach the VESA plate (B) using appropriate hardware. VESA plate can accommodate 75 mm or 100 mm hole patterns.

Note: Movement joint can hold up to 20 lbs.

Note: Check VESA compliancy and hole pattern on monitor or television as Knoll monitor solutions are designed to work with VESA compliant monitors only. The Knoll VESA plate can accommodate 75mm or 100mm hole patterns. Knoll movement joints do not ship with screws and are designed to accept an M4 or M5 screw; length is dependent on the specific monitor or television and screw should be tested prior to installation to ensure correct length; Knoll is not responsible for use of incorrect screws. If monitor has recessed VESA mounting surface, spacers (C) may be required between movement joint (A) and monitor. Spacers must be requested through Knoll Customer Service.

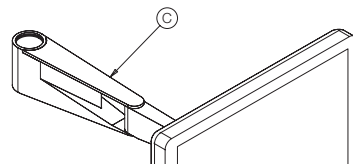
A VESA plate adaptor may be necessary for larger monitors and televisions and can be ordered separately

in the sizes of 100 mm x 200mm (M5 screws), 200mm x 200mm (M6 screws), 300mm x 300mm (M8 screws) and 400mm x 400mm/400mm x 600mm (M8 screws). Adaptors ship with separate installation instructions and may require spacers. Knoll VESA plate adaptors ship with screws to attach the adaptor to the Knoll VESA plate but do not ship with screws to attach the adaptor to the monitor or television (see screw sizes listed above, English size equivalents may be needed instead); screw length is dependent on the specific monitor or television and screw should be tested prior to installation to ensure correct length, Knoll is not responsible for use of incorrect screws.



Step 2: Attach Arm to Monitor or Television

1. Attach monitor plate (with movement joint) to arm (C) by inserting fast release pin.



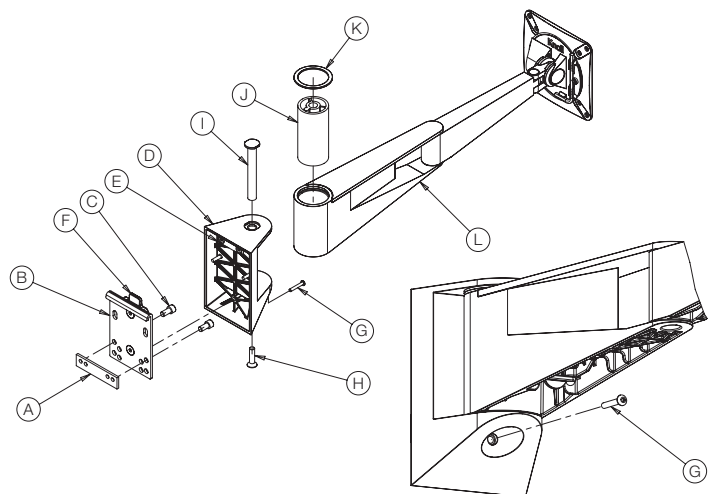
Step 3: Attach Mount to Slat Wall and then Arm to Mount (Standard Arm)

Tools Needed

Allen wrenches (in inches)

- Slat wall to strap – 5/32" (C) • Slat wall anti-dislodgement – 1/16" (G) • Direct arm axle – 5/32" (H)

1. Insert the mounting strap (A) into desired slatwall slot, with holes closer to top edge. Hang slat wall bracket (B), in desired slot aligning strap (A) holes with appropriate hole in bracket (B).
2. Install and tighten (2) screws (C). Hang arm mount bracket (D) on slat wall bracket (B), by engaging hanger strap (E) with top hook of hanger casting (F).
3. Seat arm mount bracket (D) down, fully onto hanger casting (F). Secure bracket (D) to casting (F), with screw (G).
4. Remove bottom screw (H). Push axle (I) up out of bracket (D). Remove spacer (J) and washer (K). Slide spacer (J) into arm (L) with washer (K) on top of arm (L), slide arm (L), washer (K) and spacer (J) into bracket (D). Reinstall axle (I) and screw (H). Tighten screw (H).



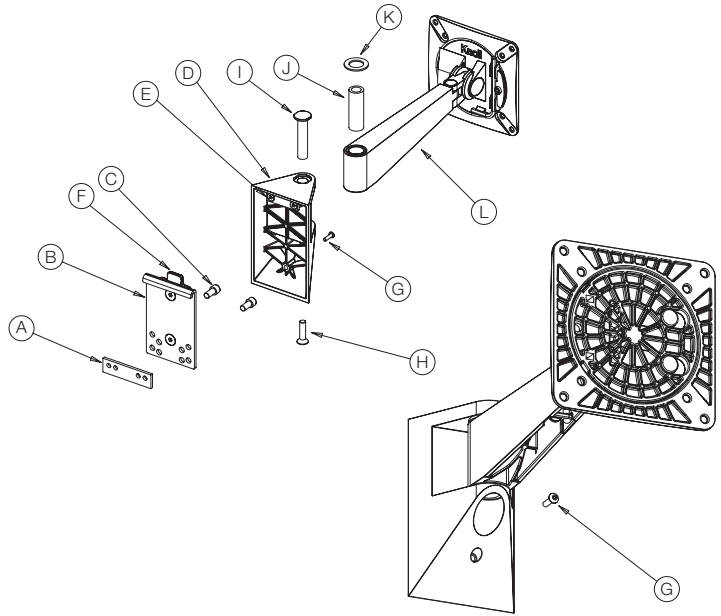
Step 3: Attach Mount to Slat Wall and then Arm to Mount (Compact Arm)

Tools Needed

Allen wrenches (in inches)

- Slat wall bracket to strap – 5/32" (C)
- Slat wall anti-dislodgement – 1/16" (G)
- Direct arm axle – 5/32" (H)

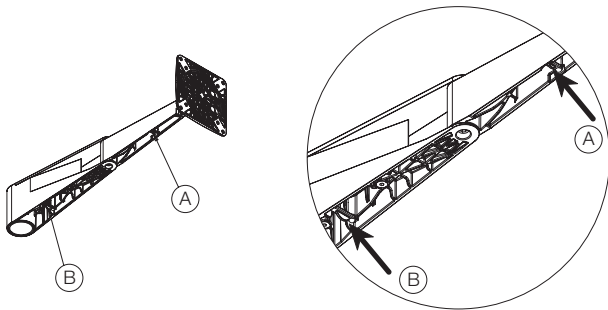
1. Insert the mounting strap (A) into desired slat wall slot, with holes closer to the top edge. Hang slat wall bracket (B) in desired slot, aligning strap (A) holes, with appropriate hole in bracket (B).
2. Install and tighten (2) screws (C). Hang compact arm bracket (D) on slat wall bracket (B), by engaging hanger strap (E) with top hook of hanger casting (F). Seat compact arm bracket (D) down fully onto hanger casting (F).
3. Secure compact arm bracket (D) to hanger casting (F) with screw (G).
4. Remove bottom screw (H). Push axle (I) up out of bracket (D). Remove spacer (J) and washer (K). Slide spacer (J) into arm (L) with washer (K) on top of arm (L), slide arm (L), washer (K) and spacer (J) into bracket (D). Reinstall axle (I) and screw (H). Tighten screw (H).



Features: Cable Management and Friction Adjustment

Cable Management Gates

To manage cables under the arm, open inboard gates (A) and (B), by slightly moving gate up to overcome the snap detent. Feed wires into the hollow under both arms. Snap both gates closed. For compact arms, there is only gate (A).



Tilt and Rotation Friction Adjustments

Tools Needed

Allen wrenches (in inches)

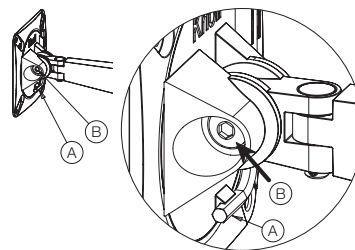
- Tilt friction – 3/16" (Included on Monitor Plate)
- Rotation friction – 3/16" (C) (Included on Monitor Plate)

Tilt friction:

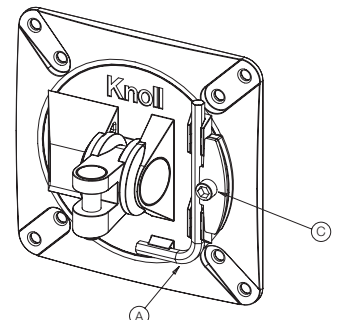
To increase friction, insert Allen wrench (included on each monitor plate) (A) into screw (B) and turn clockwise. To reduce tilt friction, turn screw (B) counterclockwise. Adjust in very small increments.

Rotation friction:

To increase friction, insert Allen wrench (A) (included on each monitor plate) (C) and turn clockwise. Adjust in very small increments.



Tilt friction

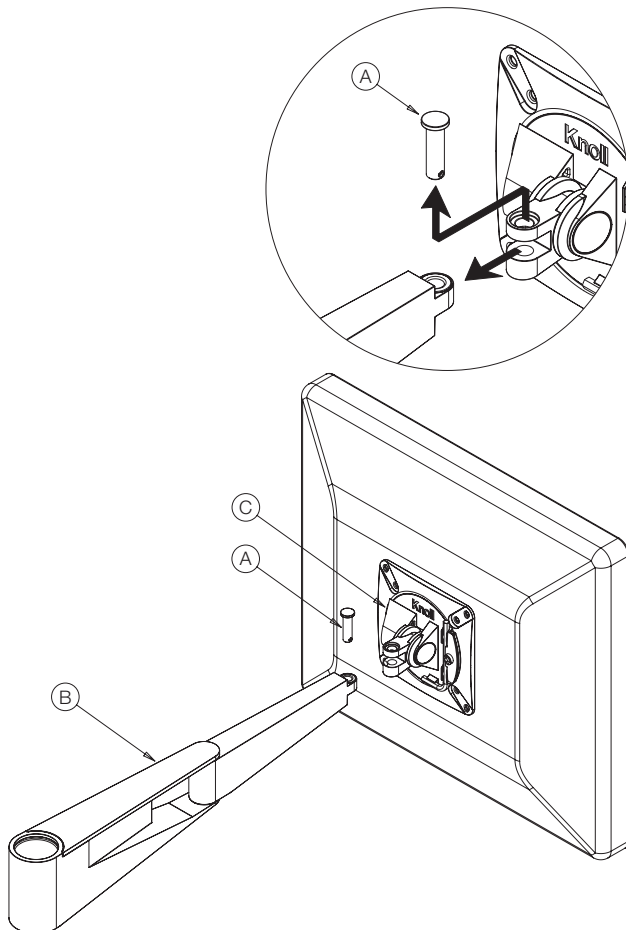


Rotation friction

Features: Fast Release and Anti-Dislodgement

Fast Release

1. Fast release functionality allows rapid removal of monitor and movement joint. Remove the fast release pin (A) from the arm assembly (B), disconnecting the movement joint (C).
2. To reinstall, position movement joint on monitor arm and insert fast release pin (A). When fully seated, pin should be flush.



Anti-Dislodgement and Theft Deterrence

Tools Needed

Allen wrenches (in inches)

- Anti-theft – 1/16" (A)

1. A small set screw (A) resides inside the lower end, of the fast release pin (B). To activate anti-theft feature, use a 1/16" Allen wrench and back set screw (A) partially out of fast release pin (B). This prevents fast release function.

