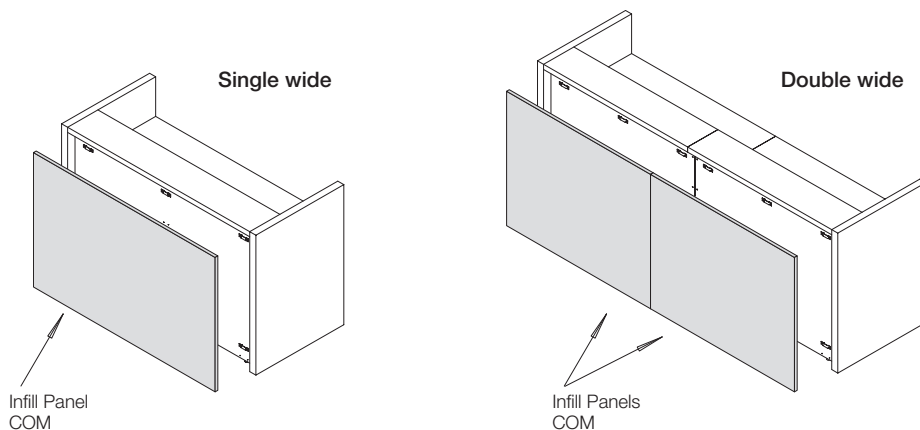


# Customer Own Material Solid Infill Panels for Single/Double Wide Desks

Reference Number: 6TP00302

Pattern Number: RASWxxxx, RADW(L/R)xxxx



**Tools Needed**  
Measuring Tape  
Phillips Square Driver

- Notes:**
- 1 Diagonal dimensions must not differ by more than 1/16".
  - 2\* Drilling shown is based on full height (I.E. recessed) infills, Fig. 1. For infills with top/bottom insets (I.E. flush type-A or -B), See page 2 for the required drilling adjustments.
  - 3 Thicknesses may vary based upon the material of choice and customer preferences. For standard thickness details, see page 2.
  - 4 Infills are symmetrical. All values and dimensions are the total requirements, inclusive from origin of dimensions only.
  - 5 If possible, it is recommended to polish and chamfer all edges.

INFILL PANELS FOR DESKS						
WHERE USED BY PRODUCT CODE	PRODUCT CODE OF RECESSED OPTION	HARDWARE KIT FOR FLUSH OPTION	NOMINAL LENGTH	ACTUAL LENGTH	DIM A	B PLCS
FOR 1-PIECE DESKS						
RASW6630	RACDIPR1	RACDIPF1	66"	61-11/16"	26-13/32"	2
RASW7230			72"	67-11/16"	29-13/32"	
RASW7830			78"	73-11/16"	21-19/32"	
RASW8430	RACDIPR2	RACDIPF2	84"	79-11/16"	23-19/32"	3
RASW9030			90"	85-11/16"	25-19/32"	
RASW9630			96"	91-11/16"	27-19/32"	
FOR 2-PIECE DESKS (LH OR RH)						
RADW(L\R)5130	RACDIPR1	RACDIPF1	51"	48-27/32"	19-31/32"	2
RADW(L\R)5430			54"	51-27/32"	21-15/32"	
RADW(L\R)5730			57"	54-27/32"	22-31/32"	
RADW(L\R)6030			60"	57-27/32"	24-15/32"	
RADW(L\R)6330			63"	60-27/32"	25-31/32"	
RADW(L\R)6630			66"	63-27/32"	27-15/32"	
RADW(L\R)6930	RACDIPR2	RACDIPF2	69"	66-27/32"	28-31/32"	3
RADW(L\R)7230			72"	69-27/32"	20-5/16"	
RADW(L\R)7530			75"	72-27/32"	21-5/16"	
RADW(L\R)7830			78"	75-27/32"	22-5/16"	
RADW(L\R)8130			81"	78-27/32"	23-5/16"	
RADW(L\R)8430			84"	81-27/32"	24-5/16"	
RADW(L\R)8730	RACDIPR1	RACDIPF1	87"	84-27/32"	25-5/16"	2
RADW(L\R)9030			90"	87-27/32"	26-5/16"	
RADW(L\R)9330			93"	90-27/32"	27-5/16"	
RADW(L\R)9630	RACDIPR2	RACDIPF2	96"	93-27/32"	28-5/16"	3
RADW(L\R)9630			96"	93-27/32"	28-5/16"	
HARDWARE KITS CONTAIN: MOUNTING BRACKETS & WOOD SCRES						

HARDWARE KIT: RACDIPF1		
PART NUMBER	QTY	DESCRIPTION
6TP40770	6	BRKT_INFILL_ADMIN\MOUNT
6TP40771	6	BRKT_INFILL_ADMIN\FL
5112220	24	SCR,SM PNP #10x3/4 T-17 BL

HARDWARE KIT: RACDIPF2		
PART NUMBER	QTY	DESCRIPTION
6TP40770	8	BRKT_INFILL_ADMIN\MOUNT
6TP40771	8	BRKT_INFILL_ADMIN\FL
5112220	32	SCR,SM PNP #10x3/4 T-17 BL

# Customer Own Material

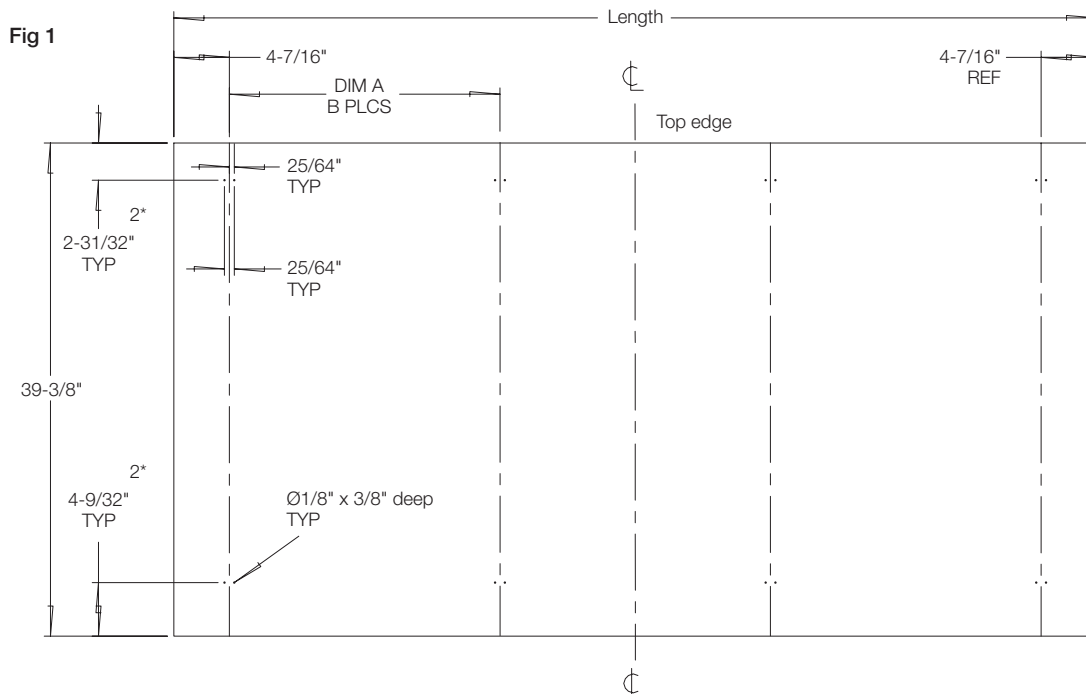
## Solid Infill Panels for Single/Double Wide Desks

### Details

**Notes:**

- 1 Unless otherwise specified, all dimensions are  $\pm 1/32"$ .
- 2\* Values indicating the drilling adjustment required to dimensions on sheet 1, also tagged 2\*.

Main view shows drilling surface. Unless otherwise specified, all dimensions are  $\pm 1/32"$ .



**Infill Panels for Desks**  
(Side elevation and standard thickness details)

For options other than full-height infills (I.E. recessed), drilling adjustments are required to all vertical dimensions. See details below showing the 3 standard offerings and the

amount of adjustment required as indicated by the dimensions tagged 2\*. For special configurations, any drilling or thickness changes required are the responsibility of the end user.

**Note:** All vertical drilling dimensions must be adjusted to suit the infill type.

