

Screens Add-Up To Stack Module Attachment Kit

Reference Number: 6TR16HO

HARDWARE LIST (INCLUDED w/ SPACER KIT "R3SKIT")	
(A)	(B)
6TR10G6 SPACER,ADD-UP TO STKMOD	6TR10G7 WSHR,FLT 9/32x1-1/4x1/16 ZN

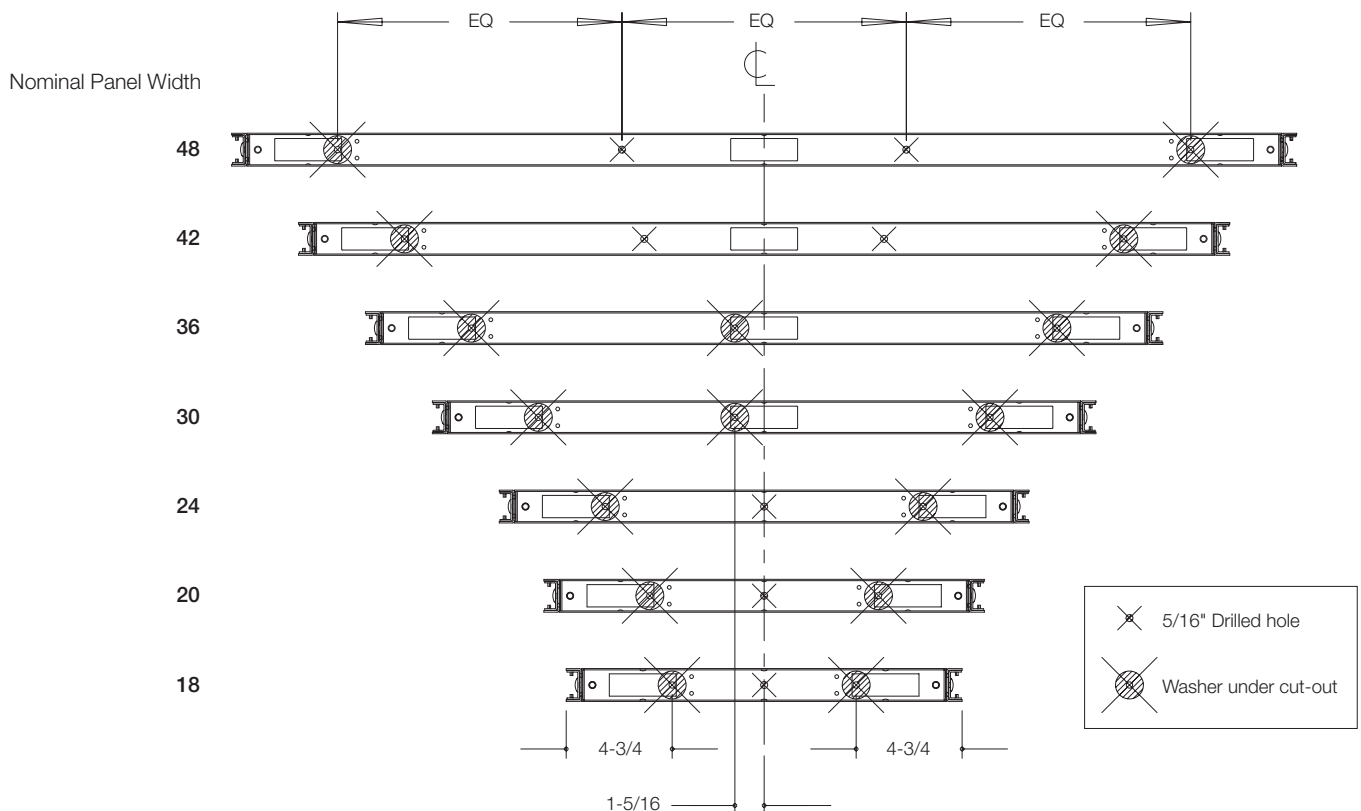
HARDWARE LIST (INCLUDED w/ ADD-UP MODULE)	
(C)	(D)
6TR44812 BOLT,CARRIAGE 1/4-20UNCx2-1/2	7473300 NUT HEX, 1/4-20 FLNG SERR

Tools required

- Measuring tape
- Drill gun
- 1/8" diametre drill bit
- 5/16" diametre drill bit
- 1/4" wrench or 1/4" deep socket with ratchet

Before you begin

1. Add-up modules can only be used with Generation 3 Reff Panels that have at least one side that is a fabric (pop-off) cover directly under the add-up module. For all other applications, speak to your Knoll representative for possible solutions.
2. The hardware kit "R3SKIT" comes with 4 spacers (A) and 4 washers (B) but not all components are required for all applications. Depending on the panel width . . .
 - 2.1. The add-on module will come with 2, 3 or 4 carriage bolts (C). For every bolt 1 spacer (A) is required.
 - 2.2. The horizontals of the stack module will have 2 or 3 rectangular cutouts, used to attach the covers. For every application where a carriage bolt (C) must be positioned over one of these cut-outs, a washer (B) is required.
 - 2.3. 5/16" diametre holes must be drilled in the stack module top horizontal whenever a carriage bolt (C) is not positioned over one of the cut-outs described in section 2.2 above.
 - 2.4. The following illustration is to help explain the statements made in sections 2.1 to 2.3 above . . .



Screens Add-Up To Stack Module Attachment Kit

Reference Number: 6TR16HO

1. Remove the top fabric insert (if there are fabric inserts on both sides, only one needs to be removed) to provide access to the inside of the stack module.
2. Depending on the add-on module width, 5/16" diameter clearance holes may need to be drilled at certain locations to install the add-up module. Please read the "Before you begin" section of these instructions for further details and to see if this step applies. If not then skip ahead to step 3.

Note: Due to the inherent hardness of the steel used in the stack module frame, it is recommended that you begin by drilling a 1/8" diameter pilot hole before you drill the 5/16" diameter bolt clearance hole to make the drilling easier.
3. Again referring to the "Before you begin" section first, position the carriage bolts (C) accordingly on the add-up module and using those locations as a guide place the spacers (A) inside the top frame horizontal of the stacking module.
4. Lower the add-up module into position and secure it using the hex nuts (D) and washers (B) as required.
5. Re-install the fabric (pop-off) cover of the stack module removed in step 1.

