

## LED Series Occupancy Sensor Installation Instructions

### Tools Needed

- Phillips driver with #2 bit, #3 bit
- Drill

1. Insert in-line connector (A) into corresponding end of the occupancy sensor (B) so the eye (F) can face direction of user to detect motion.

**For under-cabinet light**, occupancy sensor can be connected to light before connecting power adaptor and in-line plug.

**For desktop light**, mount occupancy sensor either above or on underside of work surface and interconnect light cord with plug.

**To mount to steel surface**, adhere occupancy sensor (B) to desired location using magnetic swivel mount (C).

**To mount to non-ferrous surface**, install cup washer (D) using screw (E) and adhere occupancy sensor (B) by contacting magnetic swivel mount (C) to cup washer (D).

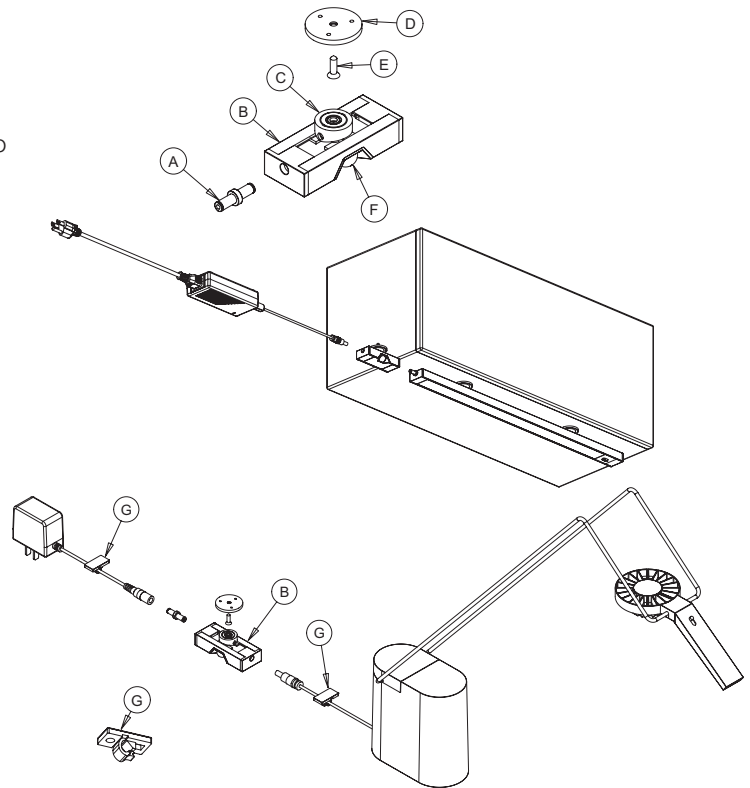
2. For desktop light, position, peel and stick cord manager clips (G) if required to manage cord and prevent occupancy sensor from shifting. Secure cords into cord manager clips (G).

*Note: Eye (F) of occupancy sensor must face user.*

**Warnings: Do not** expose occupancy sensor to direct sun, wind, heat or air conditioning.

**Do not** obstruct occupancy sensor eye from detecting user motion

**Do not** subject occupancy sensor to strong shock or vibrations



## LED Series Occupancy Sensor Installation Instructions

### Tools Needed

- Phillips driver with #2 bit, #3 bit
- Drill

1. Insert in-line connector (A) into corresponding end of the occupancy sensor (B) so the eye (F) can face direction of user to detect motion.

**For under-cabinet light**, occupancy sensor can be connected to light before connecting power adaptor and in-line plug.

**For desktop light**, mount occupancy sensor either above or on underside of work surface and interconnect light cord with plug.

**To mount to steel surface**, adhere occupancy sensor (B) to desired location using magnetic swivel mount (C).

**To mount to non-ferrous surface**, install cup washer (D) using screw (E) and adhere occupancy sensor (B) by contacting magnetic swivel mount (C) to cup washer (D).

2. For desktop light, position, peel and stick cord manager clips (G) if required to manage cord and prevent occupancy sensor from shifting. Secure cords into cord manager clips (G).

*Note: Eye (F) of occupancy sensor must face user.*

**Warnings: Do not** expose occupancy sensor to direct sun, wind, heat or air conditioning.

**Do not** obstruct occupancy sensor eye from detecting user motion

**Do not** subject occupancy sensor to strong shock or vibrations

