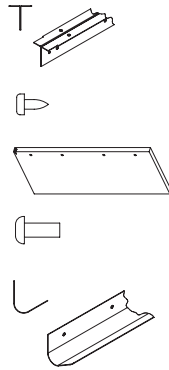


# Suspended Modesty

## Parts List - Hardware

- (A) P/N VARIES  
MODESTY MOUNTING BRACKET
- (B) 5112200  
SCR,SM PNP 10x1/2 T-A ZN
- (C) P/N VARIES  
SUSPENDED MODESTY
- (D) 5110011  
SCR,MACH 1/4-20UNCx5/8
- (E) P/N VARIES (ORDERED SEPERATELY)  
SIDE-MOUNTED WIRE MANAGER



## Tools Needed

- Measuring Tape
- 8/16" Diameter Drill
- Square Drive Screw Driver

Note: All dimensions suggested in these instructions are based on the optimal position of a suspended modesty for a rectangular peninsula top application with leg supports and a grommet. The location you mount the modesty may vary but the attachment method should be the same.

1. Mark the location where the modesty bracket (A) is to be mounted and fasten it to the underside of the mounting surface using fastener (B). (Fig. 1A & 1B)
2. Secure modesty (C) to the mounting bracket (A) using fastener (D). (Fig. 2)

Note: If optional side-hung wiremanager (E) (ordered separately) is being used, it must be assembled in conjunction with the modesty (C) also using fastener (D). (Fig. 3)

### Top View of Work Surface

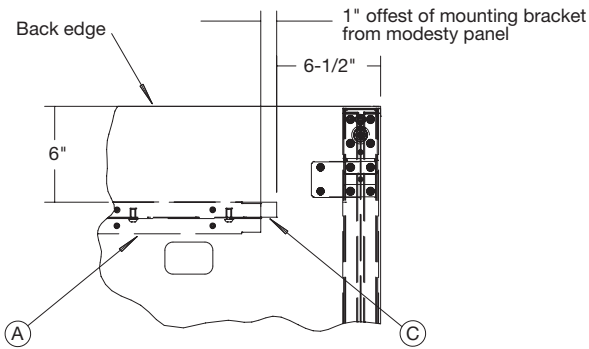


Fig. 1A

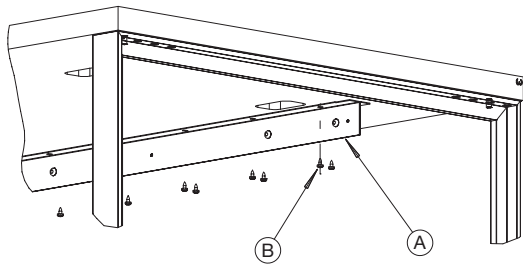


Fig. 1B

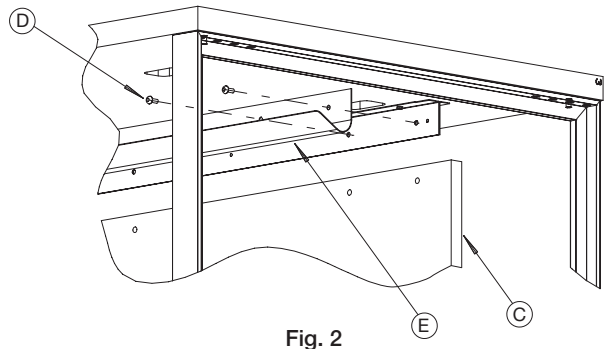


Fig. 2

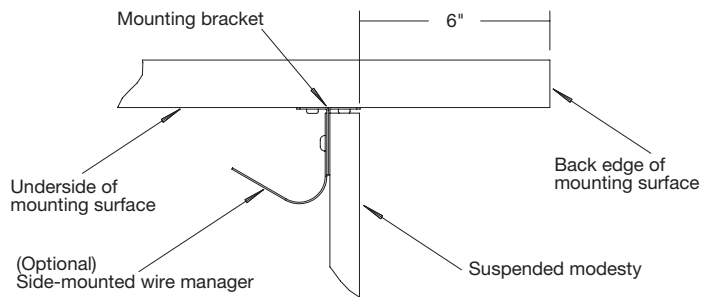


Fig. 3