

Customer Own Material

Transaction Tops for Single Wide Desks

Notes:

- 1 Diagonal dimensions must not differ by more than 1/16".
- 2* Drilling is based on a solid material (I.E. wood) transaction tops. For transaction tops requiring a separate wood core (I.E. marble, leather, Corian™, etc), See page 4 for the required drilling adjustments.
- 3 Single-wide transaction tops are symmetrical. All values are identical both sides.
- 4 If possible, it is recommended to polish and chamfer all edges of stone or glass.

Tools Needed

- Measuring Tape
- Phillips Square Driver

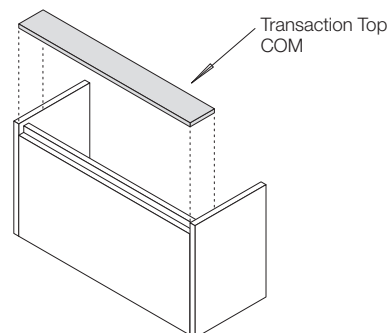
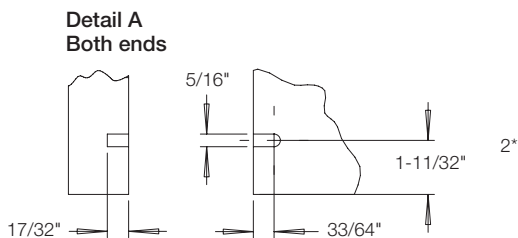
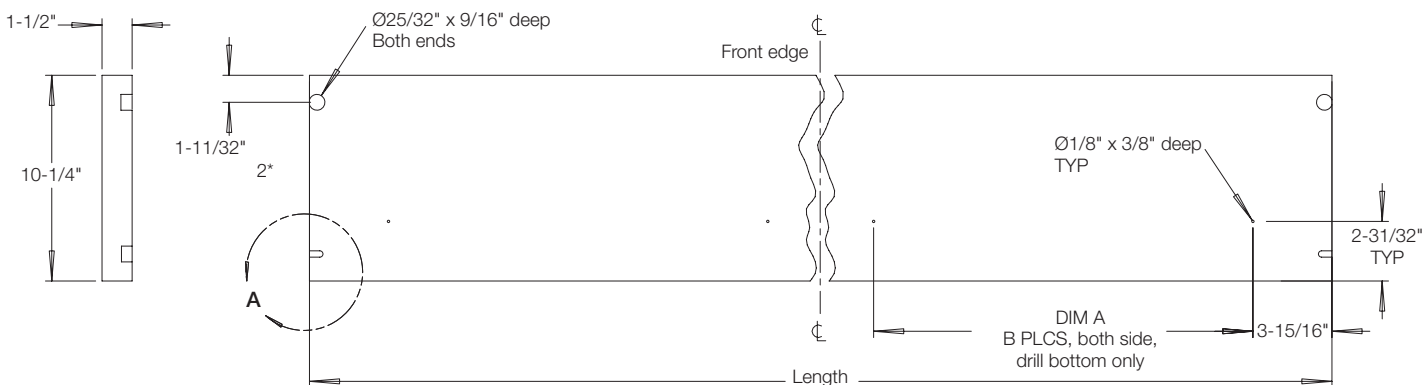
TRANSACTION TOPS FOR DESKS FOR SINGLE-WIDE DESKS					
WHERE USED BY PRODUCT CODE	PRODUCT CODE OF HARDWARE KIT	NOMINAL LENGTH	ACTUAL LENGTH	DIM A	B PLCS
RASW6630	RACDTTDS1	66"	61-13/16"	18-29/32"	1
RASW7230		72"	67-13/16"	20-5/32"	
RASW7830		78"	73-13/16"	20-5/32"	
RASW8430	RACDTTDS2	84"	79-13/16"	15-1/8"	2
RASW9030		90"	85-13/16"	15-1/8"	
RASW9630		96"	91-13/16"	16-3/8"	

HARDWARE KITS CONTAIN:
RA-FIX CONNECTORS
COMPRESSION DOWELS & WOOD SCREWS
WOOD DOWELS

HARDWARE KIT: RACDTTDS1		
PART NUMBER	QTY	DESCRIPTION
5144138	2	HOUSING,RA-FIX\BLK
5144135	2	BOLT,RA-FIX
6TR41116	4	DOWEL,COMPRESSION
5112220	4	SCR,SM PNP 10x3/4 T-A BL
5156136	2	DOWEL,WOOD Ø8.0 mm x 35.0 mm

HARDWARE KIT: RACDTTDS2		
PART NUMBER	QTY	DESCRIPTION
5144138	2	HOUSING,RA-FIX\BLK
5144135	2	BOLT,RA-FIX
6TR41116	6	DOWEL,COMPRESSION
5112220	6	SCR,SM PNP 10x3/4 T-A BL
5156136	2	DOWEL,WOOD Ø8.0 mm x 35.0 mm

Main view shows drilling (bottom) surface. Unless otherwise specified, all dimensions are ±1/32".



Customer Own Material Alternative Material Transaction Tops for Double Wide Desks - Left Hand Section

Notes:

- 1 Drilling is based on a solid material (I.E. wood) transaction tops. For transaction tops requiring a separate wood core (I.E. marble, leather, Corian™, etc), See page 4 for the required drilling adjustments.
- 2* Double-wide transaction tops are asymmetrical. All values and dimensions are the total requirements, inclusive from origin of dimensions only.
- 3 If possible, it is recommended to polished and chamfer all edges.

Tools Needed

- Measuring Tape
- Phillips Square Driver

TRANSACTION TOPS FOR DESKS LH SECTION OF DOUBLE-WIDE DESKS					
WHERE USED BY PRODUCT CODE	PRODUCT CODE OF HARDWARE KIT	NOMINAL LENGTH	ACTUAL LENGTH	DIM A	B PLCS
RADWL5130	RACDTTDL1	51"	48-29/32"	13-27/32"	3
RADWL5430		54"	51-29/32"	15-1/8"	
RADWL5730		57"	54-29/32"		
RADWL6030		60"	57-29/32"		
RADWL6330	RACDTTDL2	63"	60-29/32"	13-27/32"	4
RADWL6630		66"	63-29/32"	15-1/8"	
RADWL6930		69"	66-29/32"		
RADWL7230		72"	69-29/32"	16-3/8"	
RADWL7530		75"	72-29/32"		
RADWL7830		78"	75-29/32"		
RADWL8130		81"	78-29/32"		
RADWL8430		RACDTTDL3	84"	81-29/32"	
RADWL8730	87"		84-29/32"	16-3/8"	
RADWL9030	90"		87-29/32"		
RADWL9330	93"		90-29/32"		
RADWL9630	96"		93-29/32"		

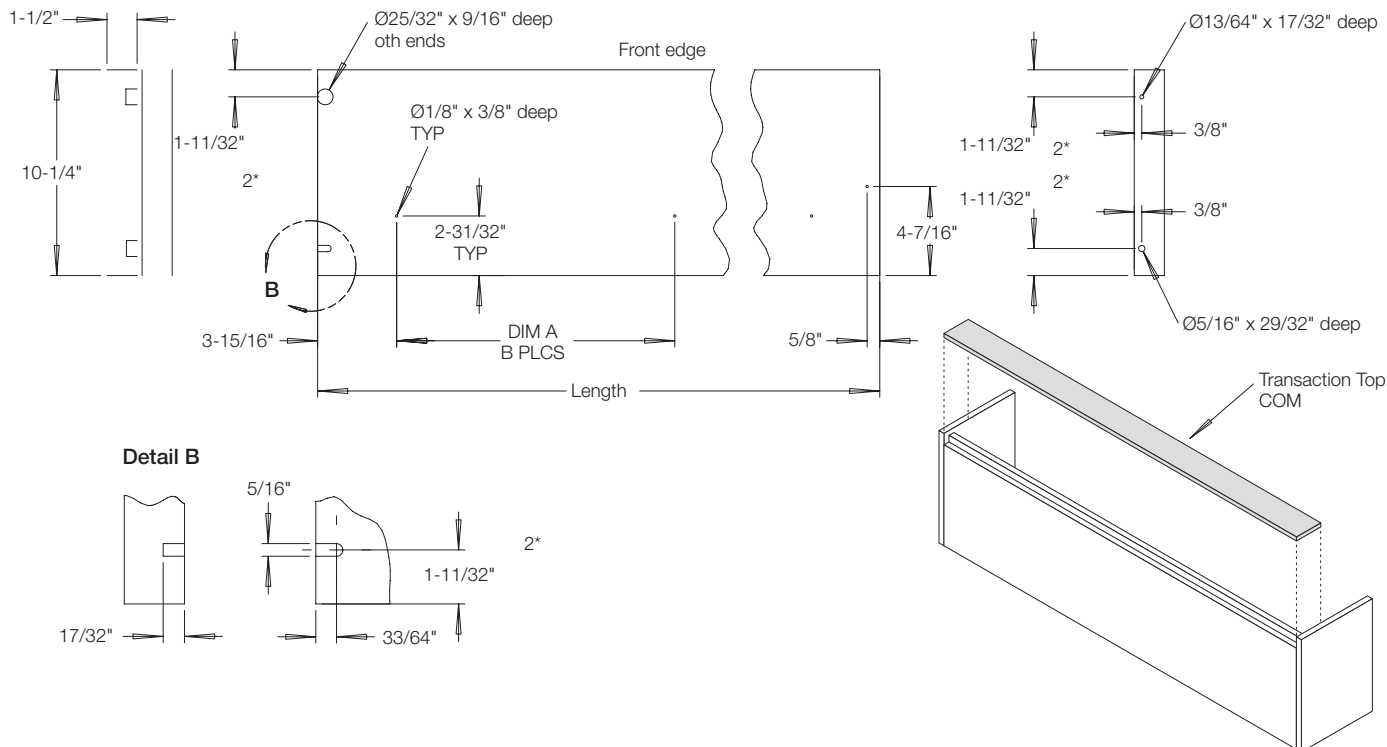
HARDWARE KIT: RACDTTDL1		
PART NUMBER	QTY	DESCRIPTION
5144138	1	HOUSING,RA-FIX\BLK
5144135	1	BOLT,RA-FIX
6TR41116	5	DOWEL,COMPRESSION
5112220	5	SCR,SM PNP 10x3/4 T-A BL
5156136	1	DOWEL,WOOD Ø8.0 mm x 35.0 mm

HARDWARE KIT: RACDTTDL2		
PART NUMBER	QTY	DESCRIPTION
5144138	1	HOUSING,RA-FIX\BLK
5144135	1	BOLT,RA-FIX
6TR41116	6	DOWEL,COMPRESSION
5112220	6	SCR,SM PNP 10x3/4 T-A BL
5156136	1	DOWEL,WOOD Ø8.0 mm x 35.0 mm

HARDWARE KIT: RACDTTDL3		
PART NUMBER	QTY	DESCRIPTION
5144138	1	HOUSING,RA-FIX\BLK
5144135	1	BOLT,RA-FIX
6TR41116	7	DOWEL,COMPRESSION
5112220	7	SCR,SM PNP 10x3/4 T-A BL
5156136	1	DOWEL,WOOD Ø8.0 mm x 35.0 mm

HARDWARE KITS CONTAIN:
RA-FIX CONNECTORS
COMPRESSION DOWELS & WOOD SCREWS
WOOD DOWELS

Main view shows drilling surface. Unless otherwise specified, all dimensions are ±1/32".



Customer Own Material Alternative Material Transaction Tops for Double Wide Desks - Right Hand Section

Notes:

- 1 Drilling is based on a solid material (I.E. wood) transaction tops. For transaction tops requiring a separate wood core (I.E. marble, leather, Corian™, etc), See page 4 for the required drilling adjustments.
- 2* Double-wide transaction tops are asymmetrical. All values and dimensions are the total requirements, inclusive from origin of dimensions only.
- 3 If possible, it is recommended to polished and chamfer all edges.

Tools Needed

- Measuring Tape
- Phillips Square Driver

TRANSACTION TOPS FOR DESKS RH SECTION FOR DOUBLE-WIDE DESKS					
WHERE USED BY PRODUCT CODE	PRODUCT CODE OF HARDWARE KIT	NOMINAL LENGTH	ACTUAL LENGTH	DIM A	B PLCS
RADWR5130	RACDTTDR1	51"	48-29/32"	13-27/32"	3
RADWR5430		54"	51-29/32"	15-1/8"	
RADWR5730		57"	54-29/32"		
RADWR6030		60"	57-29/32"		
RADWR6330	RACDTTDR2	63"	60-29/32"	13-27/32"	4
RADWR6630		66"	63-29/32"	15-1/8"	
RADWR6930		69"	66-29/32"		
RADWR7230		72"	69-29/32"	16-3/8"	
RADWR7530		75"	72-29/32"		
RADWR7830		78"	75-29/32"		
RADWR8130	81"	78-29/32"	15-1/8"	5	
RADWR8430	84"	81-29/32"			
RADWR8730	87"	84-29/32"			
RADWR9030	90"	87-29/32"			
RADWR9330	93"	90-29/32"	16-3/8"		
RADWR9630	96"	93-29/32"			

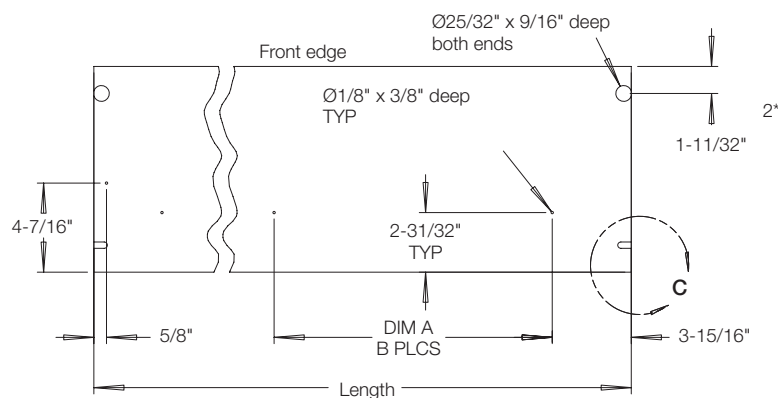
HARDWARE KITS CONTAIN:
RA-FIX CONNECTORS
COMPRESSION DOWELS & WOOD SCREWS
WOOD DOWELS

HARDWARE KIT: RACDTTDR1		
PART NUMBER	QTY	DESCRIPTION
5144138	2	HOUSING,RA-FIX\BLK
5144135	2	BOLT,RA-FIX
6TR41116	5	DOWEL,COMPRESSION
5112220	5	SCR,SM PNP 10x3/4 T-A BL
5156136	2	DOWEL,WOOD Ø8.0 mm x 35.0 mm

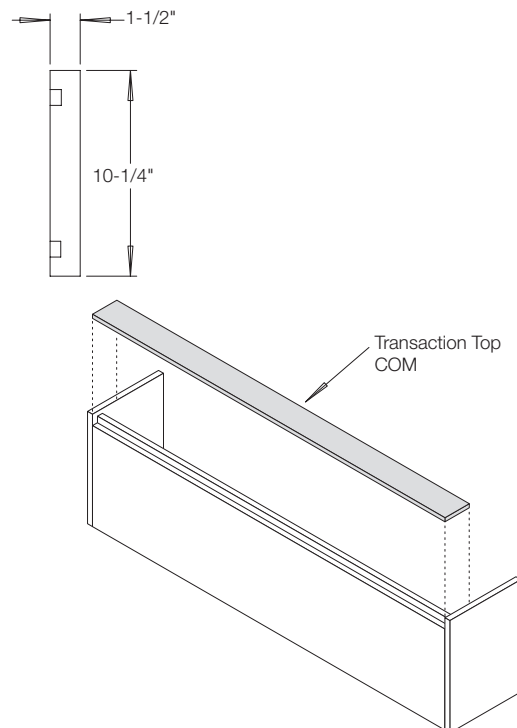
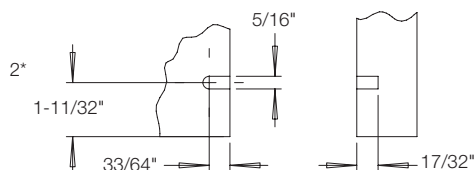
HARDWARE KIT: RACDTTDR2		
PART NUMBER	QTY	DESCRIPTION
5144138	2	HOUSING,RA-FIX\BLK
5144135	2	BOLT,RA-FIX
6TR41116	6	DOWEL,COMPRESSION
5112220	6	SCR,SM PNP 10x3/4 T-A BL
5156136	2	DOWEL,WOOD Ø8.0 mm x 35.0 mm

HARDWARE KIT: RACDTTDR3		
PART NUMBER	QTY	DESCRIPTION
5144138	2	HOUSING,RA-FIX\BLK
5144135	2	BOLT,RA-FIX
6TR41116	7	DOWEL,COMPRESSION
5112220	7	SCR,SM PNP 10x3/4 T-A BL
5156136	2	DOWEL,WOOD Ø8.0 mm x 35.0 mm

Main view shows drilling surface. Unless otherwise specified, all dimensions are ±1/32".



**Detail C
Both ends**



Customer Own Material Transaction Tops for Desk Wood Core Construction Details

For certain materials (I.E. marble, leather, Corian™, etc), transaction tops will need to be constructed using a separate wood core material surrounded by the material of choice. See details below showing the recommended size and drillings adjustments. All drilling patterns must be adjusted to suit the core material.

Notes:
Alternative material transaction tops are limited for use on the desk portion only. If return transaction tops are to be used, alternative materials can not be used.

