

Tone™ Power Strip Installation Guide

Knoll

Tone Power Strip

Tone Height-Adjustable Tables

Pattern Numbers Represented:

Power Strip, **TBPS24**

Parts List:

Plug Strip (A)

Black Power Strip Clips (B)

#10 .875 x .203 x .063 Washer (C)

8-32 x .125" Hex Nut (D)

#8-32 1/4" Pan Head Machine Screw (E)

L-Bracket (F)

#8 x 3/4" Pan Head Sheet Metal Screw (G)

3/8" Diameter Black Nylon P-Clamp (H)

#6 x 5/8" Pan Head Wood Screw (I)

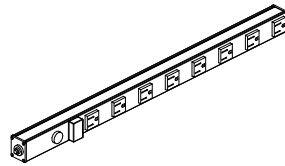
Pre-assembled Tone Height-Adjustable Table

Tools Needed:

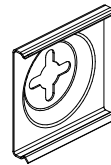
Power Driver

Phillips #2 Bit

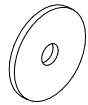
(A)



(B) Included with Plug Strip (A), replacement not available



(C)



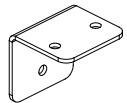
(D)



(E)



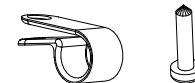
(F)



(G)



(H) / (I) 3AE5012 packaged together



STEPS

IMPORTANT NOTE: Several **flat-head** screws are included in the power strip hardware kit that should be discarded and **MUST NOT** be used for this installation. These screws are longer than the worksurface thickness and will damage the worksurface.

NOTE: If the Tone Power Strip is to be used with a Tone Hinged Wire Cover, install the hinged wire cover brackets first, then install the power Strip. See the Tone Hinged Wire Cover Installation Instructions for additional detail.

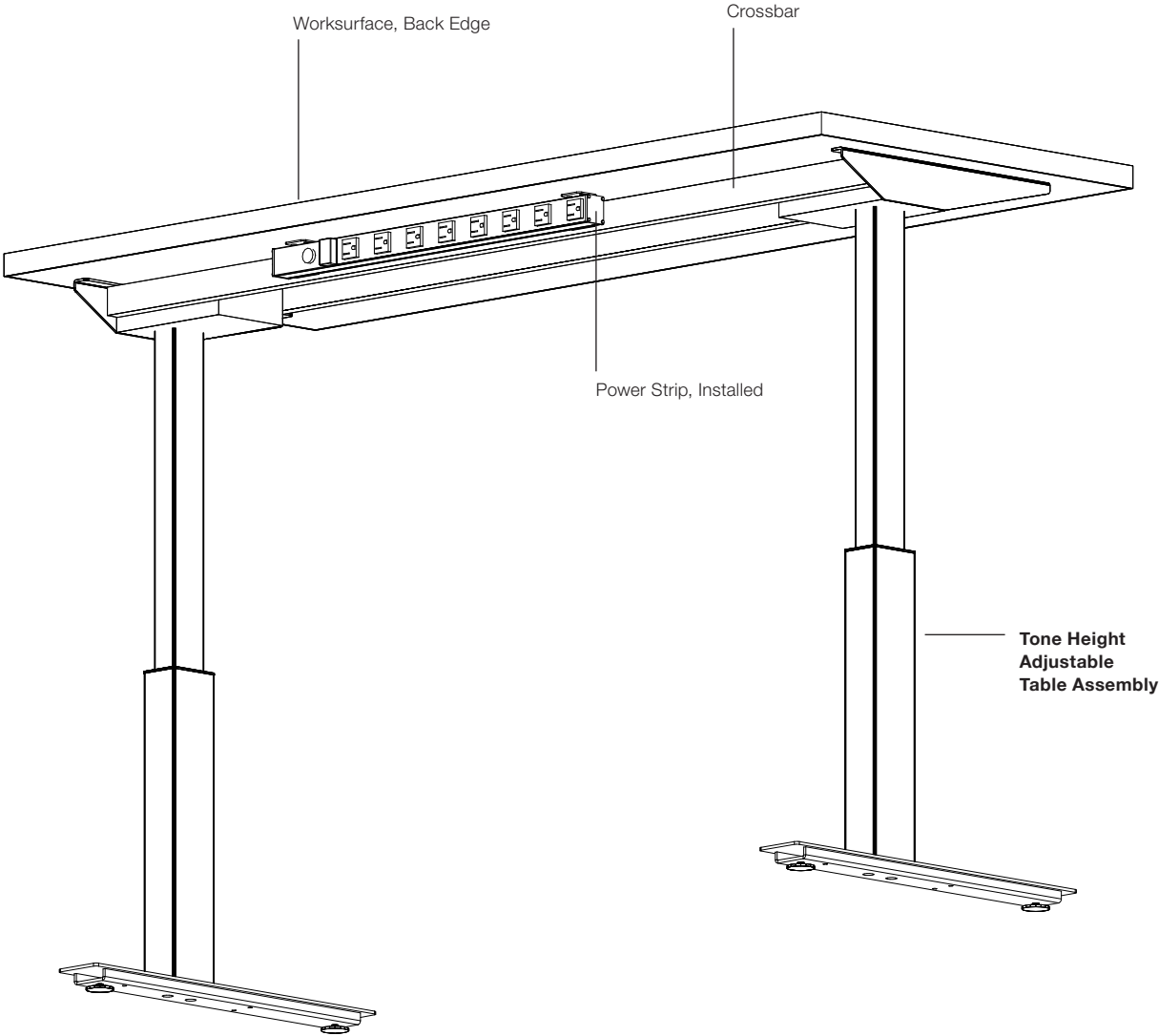
1. Secure a black power strip clip (B) to an L-bracket (F) using a #8-32 1/4" pan head machine screw (E), a #10 .875 x .203 x .063 washer (C), and a 8-32 x .125" hex nut (D). Repeat for the second power strip clip (B).

2. Secure the L-bracket assemblies to the underside of the worksurface 1-1/8" from the crossbar, using (2) #8 x 3/4" pan head wood screws (G) per bracket.

NOTE: L-brackets and their attached power strip clips should face **AWAY** from the user side of the table.

NOTE: The spacing between the L-brackets is flexible. Generally, they should be spaced approximately 19" apart, but spacing may vary according to availability/ conflict with additionally installed brackets (i.e. Hinged Wire Cover brackets.)

3. Snap the back of the plug strip (A) into the clips. They should fit snugly.
4. Use the included 3/8" dia. black nylon P-clamps with their corresponding #6 x 5/8" pan head wood screws (I) to manage the power cord along the underside of the worksurface, as necessary.



Tone Power Strip, Assembled, View From Below

