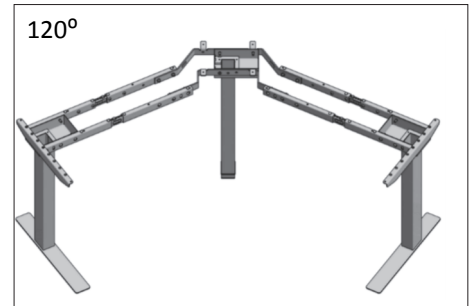
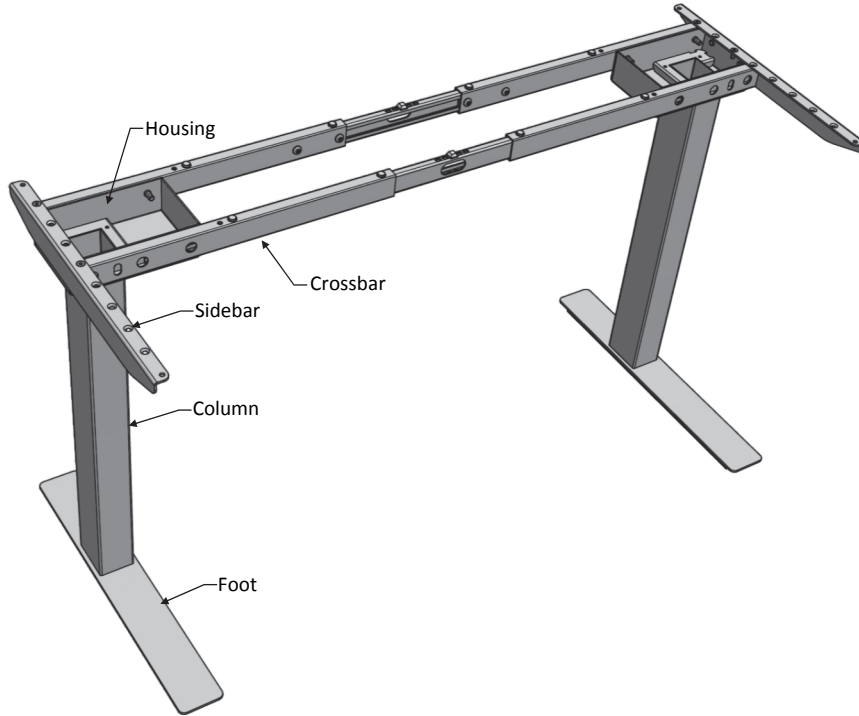


Tone Fixed Height

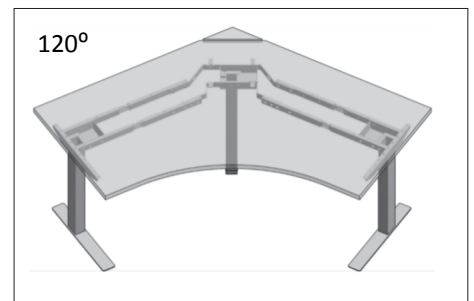
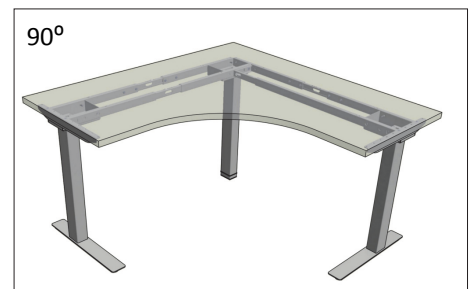
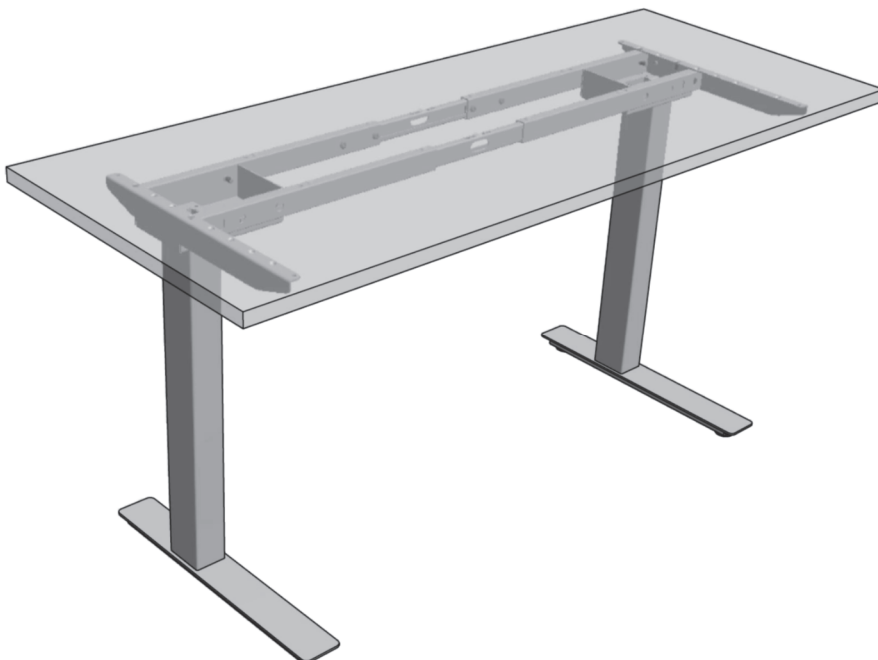
Note that these instructions show generic parts. Parts included with individual tables may differ in appearance and functionality, but the assembly principle is the same.

Caution: No impact drivers or other high-torque equipment are to be used!

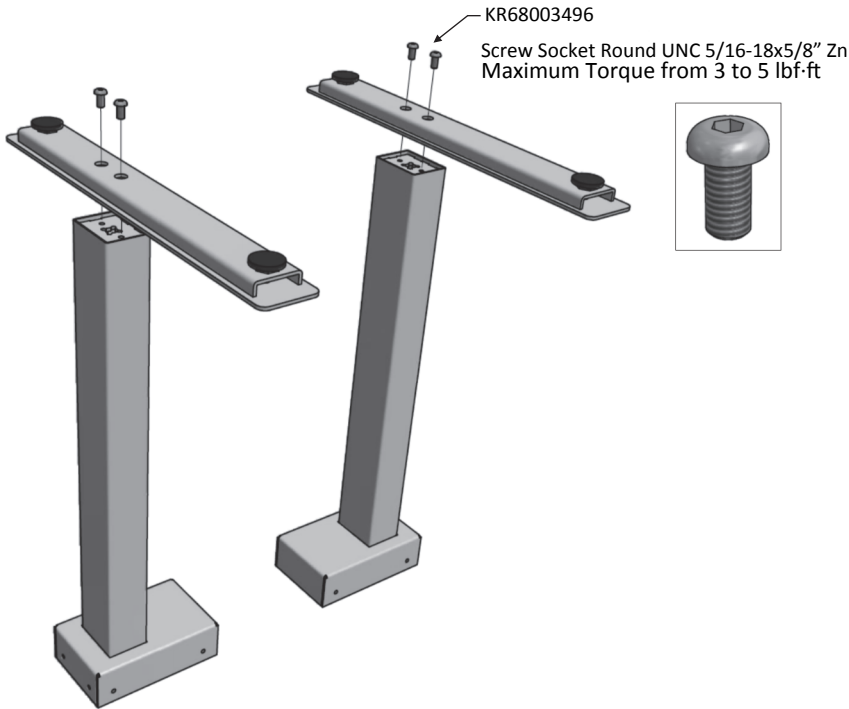
Complete product without work surface



Complete product with work surface



(Fig. 1) Feet



Alternative Foot Types

On-Foot / OnC



On-Foot / OffC



In-Foot / OnC



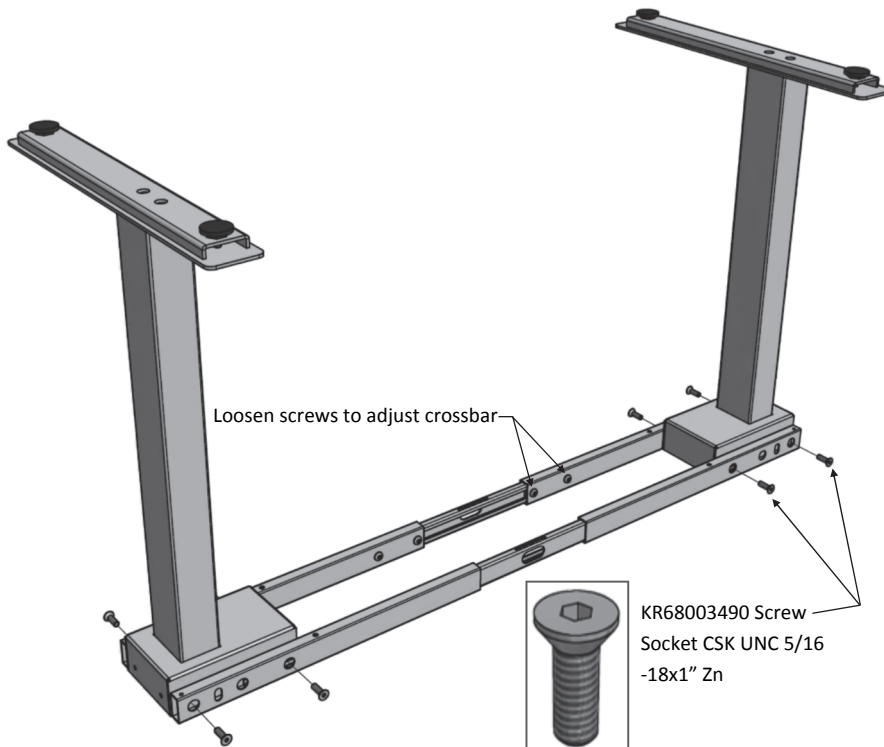
In-Foot / OffC



Carefully measure out desired work surface height before adjusting columns.

Height can only be adjusted on an unloaded column.

(Fig. 2) Crossbars



Crossbar Types

Adjustable width



Fixed width



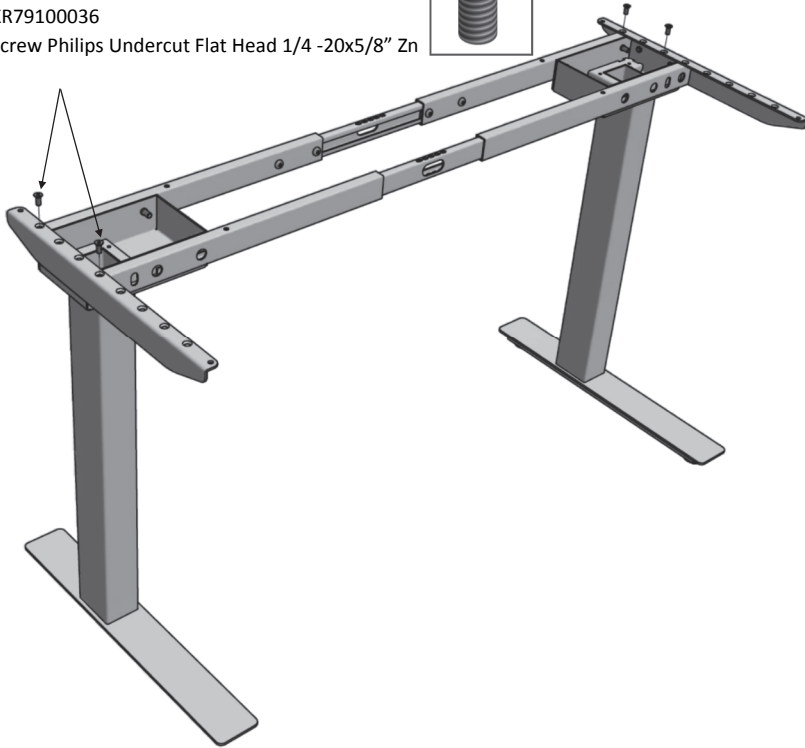
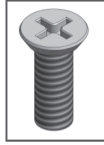
Do not use the two middle holes of the crossbars.



(Fig. 3) Sidebars

KR79100036

Screw Philips Undercut Flat Head 1/4 -20x5/8" Zn

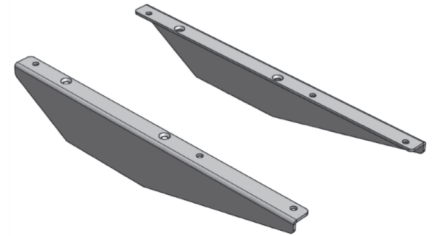


Sidebar Types

Right Hand / Left Hand sidebars for C-leg

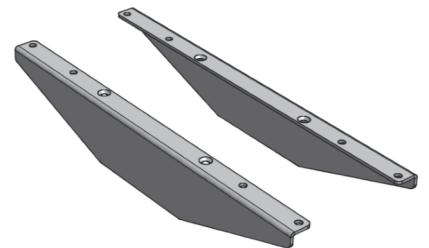
Part numbers: KR3ae4014L - Left

KR3ae4014R - Right



Symmetric Sidebar for T-leg

Part number: KR3ae4015

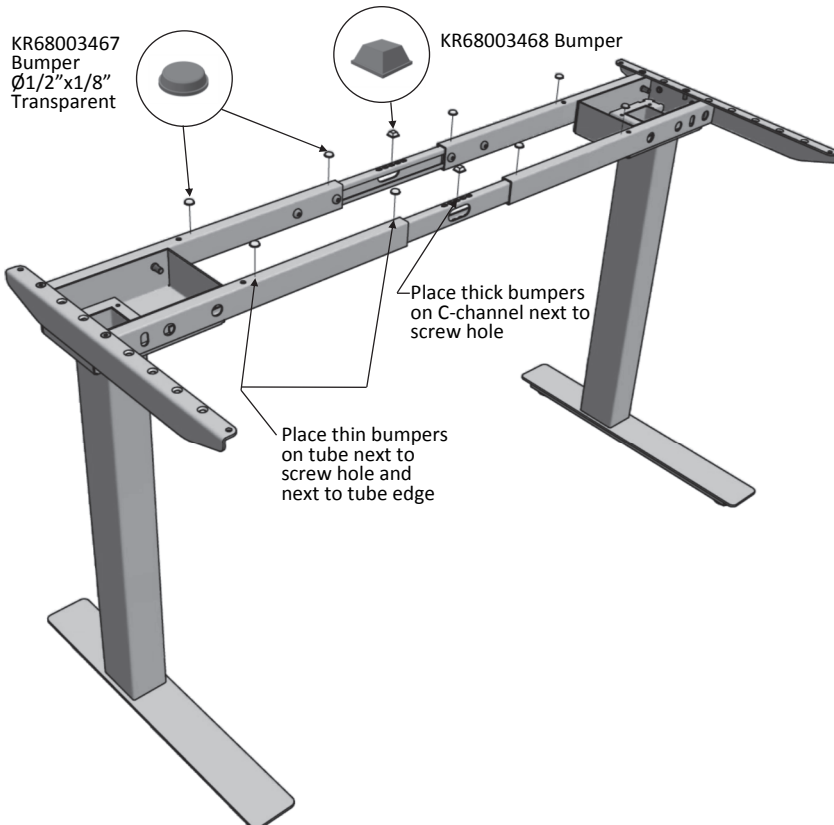
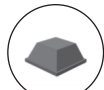


(Fig. 4) Bumpers

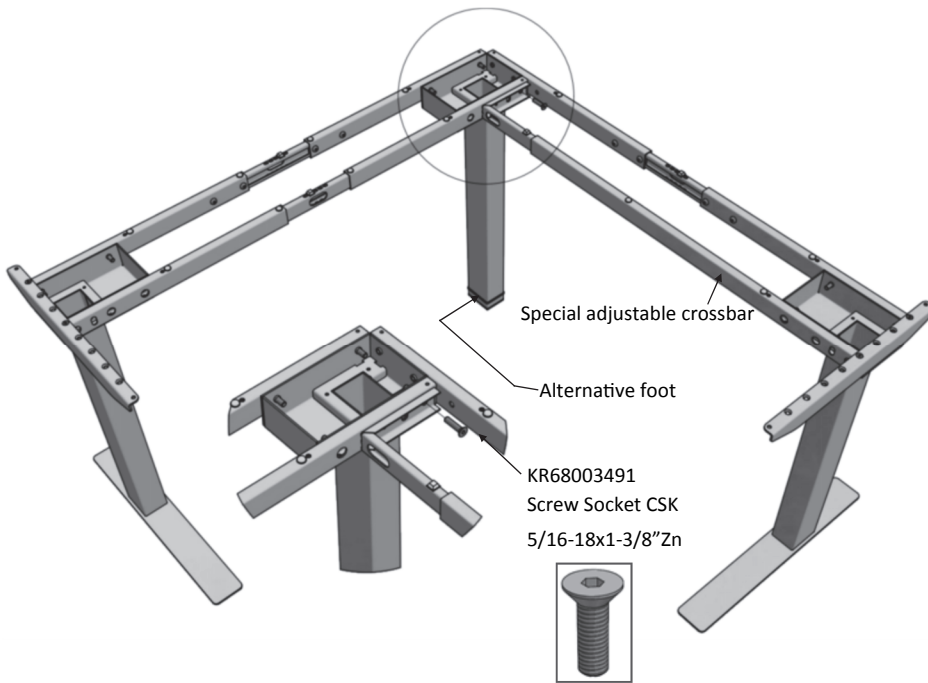
KR68003467
Bumper
Ø1/2"x1/8"
Transparent



KR68003468 Bumper

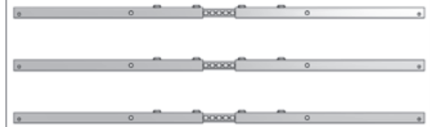


(Fig. 5) 3-Column 90° Adjustable Crossbars



Adjustable crossbars for 3-column 90° table.

3 regular adjustable crossbars

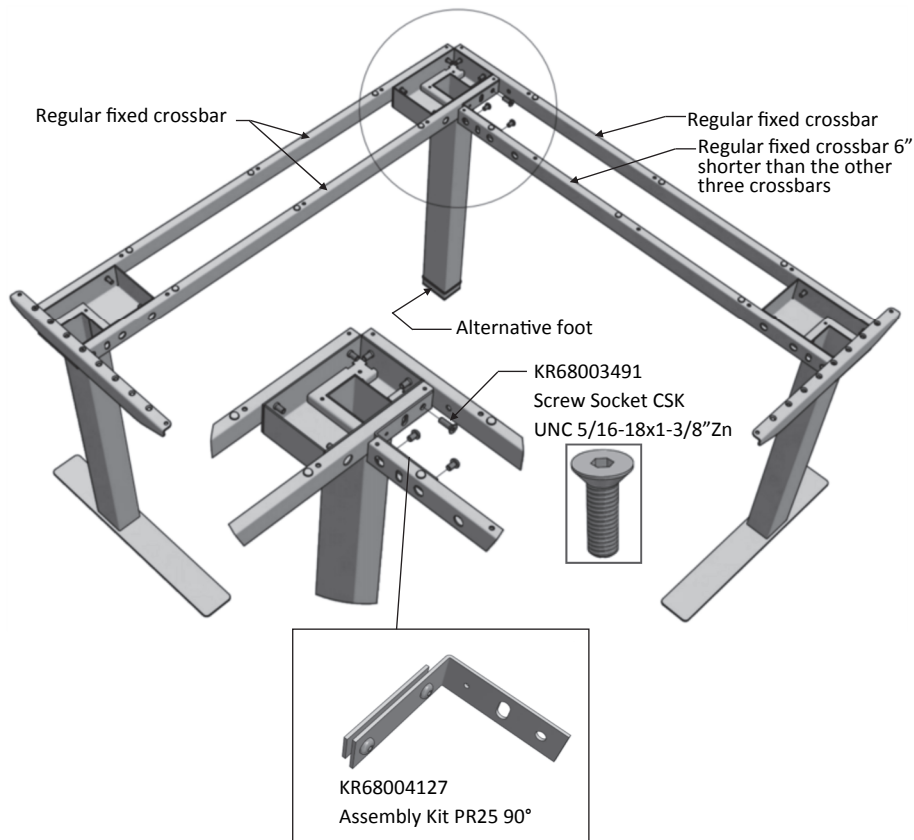


1 special adjustable crossbar



No additional assembly kit

(Fig. 6) 3-Column 90° Fixed Crossbars



Fixed crossbars for 3-column 90° table.

3 regular fixed crossbars



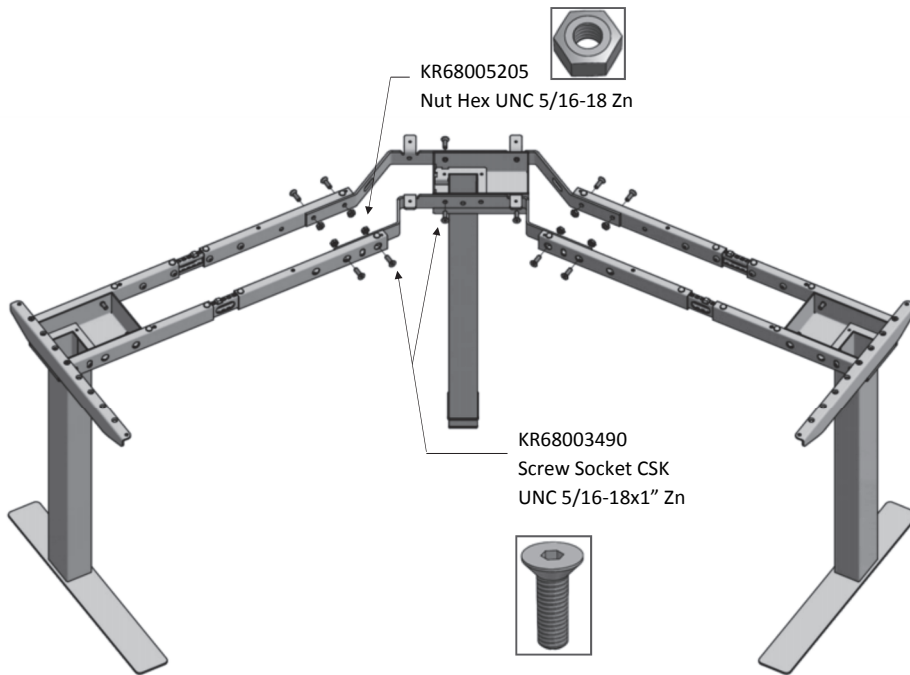
1 regular fixed crossbar, 6" shorter than the other three crossbars



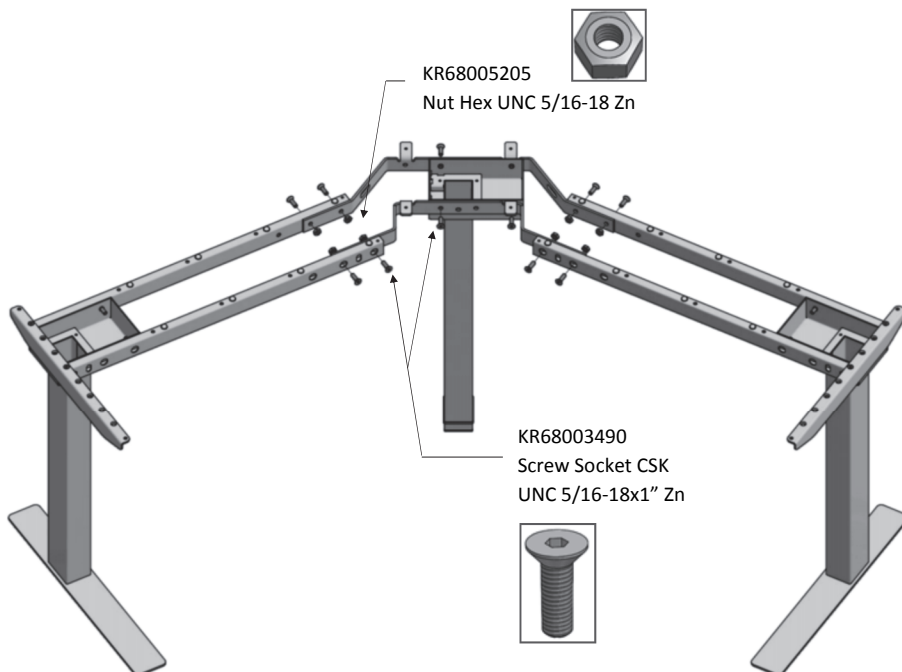
1 additional assembly kit



(Fig. 7) 3-Column 120° Adjustable Crossbars



(Fig. 8) 3-Column 120° Fixed Crossbars



Adjustable crossbars for 3-column 120° table.

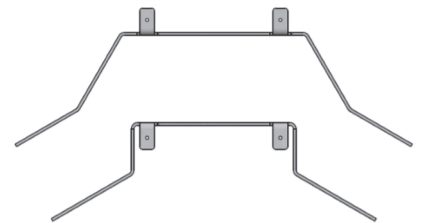
4 regular adjustable crossbars



2 Brackets

KR3AE4121 Bracket Outer

KR3AE4120 Bracket Inner



Fixed crossbars for 3-column 120° table.

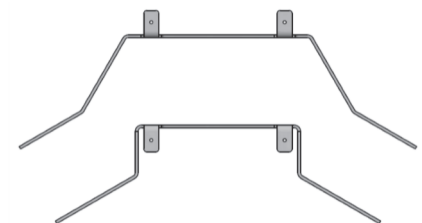
4 regular fixed crossbars



2 Brackets

KR3AE4121 Bracket Outer

KR3AE4120 Bracket Inner



ASSEMBLY PROCEDURE

	ENGLISH
Fig. 1	<p>FEET</p> <p>Assemble the feet on the columns. Tighten screws firmly. Maximum Torque from 3 to 5 lbf·ft .</p> <p><u>IMPORTANT:</u> Make sure the correct screws are used.</p>
Fig. 2	<p>CROSSBARS</p> <p>Attach the crossbars on the long side of the housings. Tighten screws firmly.</p> <p><u>IMPORTANT:</u> Do not use the two middle holes of the crossbars.</p> <p>Loosen the button head screws on the crossbars and adjust the frame to desired width. Fasten the screws on the crossbars.</p>
Fig. 3	<p>SIDEBARS</p> <p>Fasten sidebars in threaded holes on top of crossbars with undercut flat head screws.</p> <p>Two types of sidebars exist: symmetrical for T-leg tables and right/left-handed for C-leg tables.</p>
Fig. 4	<p>BUMPERS</p> <p>Adhesive rubber bumpers come in two types; thick and thin. The thick bumpers are only used on the adjustable-width crossbars, and are placed on top of the C-channel in the center. Do not use thick bumpers on fixed-width crossbars. The thin bumpers are placed on fixed-width crossbars and should be spaced evenly between the sidebars in order to prevent the work surface from bowing. The work surface will rest upon the bumpers on the crossbars, and directly upon the sidebars (without bumpers).</p> <p>WORK SURFACE</p> <p>Two sizes of wood screws for the work surface are included in the assembly kit. KR68006557 Screw Phil Pan FT-W P17 10x1" Zn KR68006558 Screw Phil Truss FT-W P17 10x2-1/2" Zn</p> <p>The shorter screws go through the sidebars. The longer screws go through the crossbars.</p> <p><u>IMPORTANT:</u> These wood screws require a minimum of 1" thick work surface.</p>

	ENGLISH
<i>Fig. 5</i>	3-COLUMN 90° TABLE, ADJUSTABLE CROSSBARS 3 regular adjustable crossbars and 1 special adjustable crossbar with an angled C-channel are used.
<i>Fig. 6</i>	3-COLUMN 90° TABLE, FIXED CROSSBARS 3 regular fixed crossbars together with 1 regular fixed crossbar 6" shorter than the other three are used. The assembly procedure is the same as for a 2-column table with the exception that the angled C-channel mounts to the center housing with one extra-long screw 1-3/8". An alternative foot, shaped as a spacer, is used on the center column.
<i>Fig. 7-8</i>	3-COLUMN 120° TABLE 4 regular adjustable or fixed crossbars are used together with two 120° brackets that attach to the center column. The assembly procedure is the same as for a 2-column table. The 120° brackets are attached to the crossbars with bolts and nuts.

User Manual Tone Fixed and Tone Pin-Set



User manual should be left on the table after completed installation.

REVISION

DO NOT INCLUDE THIS PAGE IN PRINTOUTS

Update document ID and revision on previous page

Document ID: **68004680**

Created by: PERLOH Revision: **E**

Creation date: 2014-07-22

Revision date: 2017-07-17

<u>Revision</u>	<u>Date</u>	<u>Change</u>	<u>Revised by</u>
Rev A	2014-07-22	New document	PERLOH
Rev B	2014-10-01	New format (Letter instead of A4) new name and B&W	PERLOH
Rev C	2015-03-03	Fig. 3, 79100036 was 68003465	JONLAR
Rev D	2016-04-12	Wood screws Fig.4 changed Text modified after Knoll input Revised wood screws in Fig. 4, Page 6 Revised screw types in Fig. 2, 5, 6, 7 & 8 Reworded bumper instructions in Fig. 4, Page 6 New bracket outer & inner on Pages 1 & 5 Re-added feet on page 2, removed redundant sidebars on page 3 Revised date in header	LINPHA
Rev E	2017-07-17	Added Caution Note in page 1 Added Maximum Torque from 3 to 5 lbf-ft on page 2 & 6	LINPHA