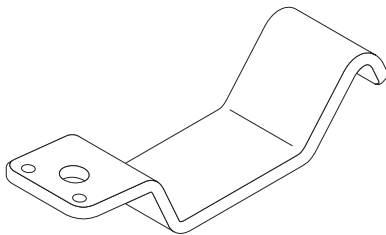
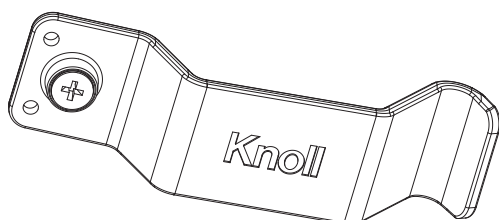
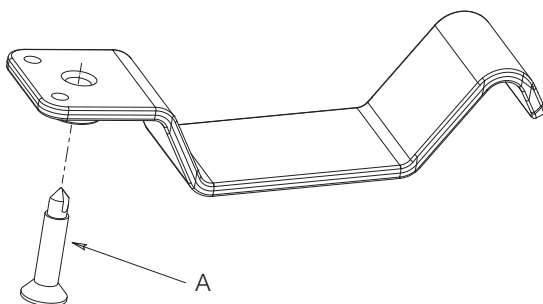


Cable Management Clips Installation Instructions



Swivel Mounting

1. Arrange all equipment with cables that will be managed below the worksurface. When installing on height adjustable tables, ensure enough slack for the highest table position.
2. Position first clip at desired location below the worksurface and secure using provided primary fastening screw (A).
3. Pull unattached end of the clip down to feed cables into the clip. Clip can swivel about the screw.
4. Repeat with the desired amount of clips. On average, two clips per workstation are sufficient.



Tools Needed

- #2 and #3 Phillips screwdrivers

Fixed Mounting

1. Arrange all equipment with cables that will be managed below the worksurface. When installing on height adjustable tables, ensure enough slack for the highest table position.
- Optional: Use included double-sided tape pad (C) to assist in holding the clip to the underside of the worksurface prior to fastening.
2. Position first clip at desired location below the worksurface and secure using provided primary fastening screw (A) and use one or both secondary alignment screws (B) to secure the direction of the clip.
 3. Pull unattached end of the clip down to feed cables into the clip.
 4. Repeat with the desired amount of clips. On average, two clips per workstation are sufficient.

