

User Guide

Toggle and Digital Switch— For Use with k.™ bench Height-Adjustable Tables

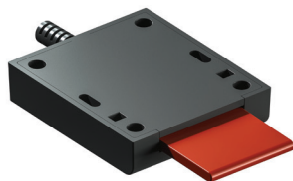
The k. bench Toggle Switch and Digital Switch are designed for use with k. bench Height-Adjustable Tables only. The intuitive Toggle Switch offers light-touch responsiveness for table height adjustment. The Digital Switch features basic up and down buttons, programmable quick sit and stand buttons, and a digital read-out of table height. This document details switch set up and programming.

Toggle Handset

Reset the Table

Perform reset before first use

Perform each time Collision Detection is activated



- 1** Clear the area around and under the table
- 2** Press and hold Toggle Down until table is at minimum height.
- 3** Press and hold Toggle Down for 5 seconds.
- 4** Press and hold Toggle Down; table will move down below Min height to mechanical lower limits (both columns hit hard stops) then table will move back up to Min height.

Program Sit Height

- 1** Move table to preferred seated height.
- 2** Press and hold round Finger Button (underside of switch), also Hold Toggle Down, for 3 seconds.

Program Stand Height

- 1** Move table to preferred standing height.
- 2** Press and hold round Finger Button (underside of switch), also Hold Toggle Up, for 3 seconds.

Program Upper Limit and/or Lower Limit

Set an upper or lower limit when planning with storage that interferes with table adjustment range.

Requires use of Recessed Button, inside hole on bottom of

housing, and a tool to reach the recessed button.

Use a straightened Paper Clip, or the like.

Upper Limit:

- 1** Move table to preferred Upper Limit height.
- 2** Press and hold Recessed Button, also Hold Toggle Up, for 5 seconds.

Lower Limit:

- 1** Move table to preferred Lower Limit height.
- 2** Press and hold Recessed Button, also Hold Toggle Down, for 5 seconds.

Clear Upper Limit and/or Lower Limit:

Clearing Limits is required to change Upper Limit or Lower Limit.

- 1** Enter RESET mode: Lower Table to Min height, release Toggle
- 2** Press and Hold Toggle Down, for 5 seconds. Release.
- 3** Press round Finger Button to Clear any limits previously set.

Operating the Table

- 1** Press and hold Toggle Up or Down to adjust the height of the table.
- 2** Double-Tap, and hold, Down to adjust table to programmed Sit Height.
- 3** Double-Tap, and hold, Up to adjust table to programmed Stand Height.

Digital Switch

Reset the Table

Perform reset before first use

Perform each time Collision Detection is activated



- 1 Clear the area around and under the table
- 2 Press and hold for until table is at minimum height.
- 3 Press and hold for 5 seconds, or until display indicates flashing.
- 4 Press and hold ; table will move down below Min height to mechanical lower limits (both columns hit hard stops) then table will move back up to Min height. Display will indicate Min height in inches.

Program Sit Height

- 1 Move table to preferred seated height.
- 2 Press
- 3 Press [S - 1] to store location.

Program Stand Height

- 1 Move table to preferred standing height.
- 2 Press
- 3 Press [S-2] to store location.

Program Upper Limit and/or Lower Limit

Set an upper or lower limit when planning with storage that interferes with table adjustment range.

Upper Limit:

- 1 Move table to preferred Upper Limit height.
- 2 Press [S -]
- 3 Press [S -, blinks]
- 4 Press and hold for 2 seconds [999] to store location.

Lower Limit:

- 1 Move table to preferred Lower Limit height.
- 2 Press [S -]
- 3 Press [S -, blinks]
- 4 Press and hold for 2 seconds [000] to store location.

Clear Upper Limit and/or Lower Limit:

Clearing Limits is required to change Upper Limit or Lower Limit.

- 1 Press [S -]
- 2 Press and hold for 2 seconds [555] to clear any limits previously set.

Operating the Table

The k. bench switch enters stand-by mode after 10 seconds of inactivity. Press any button to activate the system. When active, the digital switch will show the table's current height in inches (or centimeters).

- 1 Press and hold or or button to adjust the height of the table.