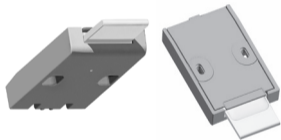


Toggle Switch User Manual



For use with k.stand models.

Knoll

Installation

Install Toggle flush with edge of worksurface using only the two provided screws. If the worksurface thickness is less than 19mm (3/4"), use shorter screws (not provided). **DO NOT USE LONGER OR HEAVIER SCREWS.** Connect the toggle switch unit to the ECS+ box.

Start-up / Reset

CRITICAL STEP: At installation, or if a critical component such as a column or motor is changed or disconnected, a reset must be performed.

NOTE! Ensure that the area around and under the table is clear.



Then press and hold the paddle "down" until the table reaches its lowest limit.



Release the paddle; the reset process is complete.

Function Guide

Adjust the table upwards: Press the paddle up until the table reaches desired height.



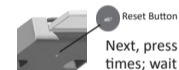
Adjust the table downwards: Press the paddle down until the table reaches desired height.



Setting Height Limits

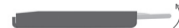
Two "memory positions," or height limits, may be set according to your preference; an upper limit and a lower limit.

To set the upper limit:
First, adjust the table to the desired height.



Next, press the reset button 3 times; wait 1 second in between.

Within the next 2 seconds, press the paddle up for 1 second to set the position. The upper limit is now stored to memory.



Setting Height Limits (cont.)

To set the lower limit:
Adjust the table to the desired lower height. Follow the procedure for setting the upper limit, but press the paddle down (instead of up) for 1 second to set the lower limit position.



NOTE: To replace either setting, simply follow this procedure and the new limit(s) will overwrite the old.

NOTE: To move the table beyond the stored upper or lower limit, release the paddle and press it again for 5 more seconds. The table will move past its stored limits.