

Quoin Credenza Ganging

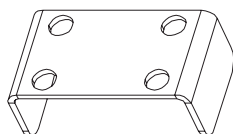
Orderable pattern VARS01

1. Remove shelves and/or drawers from both units.
2. Lay units on their backs side by side on a flat, nonabrasive surface. Clamp units together to maintain alignment. **(Fig. 1)**
3. Place ganging bracket on base spanning both units as shown in Fig. 2 & 3
4. Use #8 x 1/2" self-drilling screws (4 per bracket) to attach ganging brackets to both units. **(Fig. 2 & 3)**
5. Mark a spot approximately 1/2" behind front vertical channel and 17" up from top of base and drive (1) #10-24 x 1/2" self-drilling screw from inside of locker to inside of credenza. **(Fig. 4)**

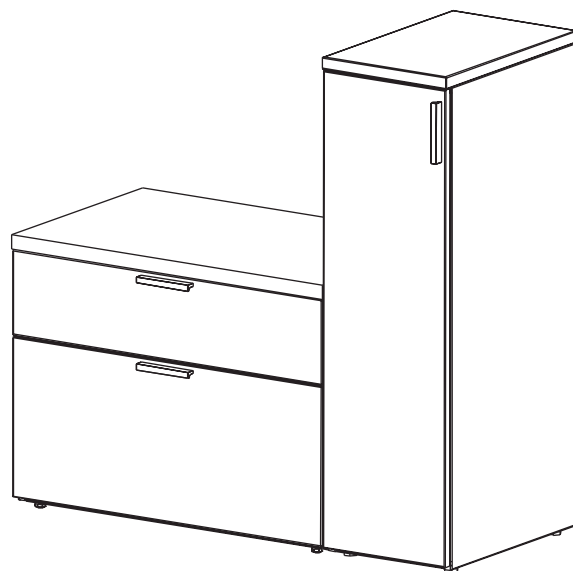
Hardware



1/2" Self-drilling screw



Ganging bracket



Note: Position is critical to prevent interference with locker shelf.

Fig. 1

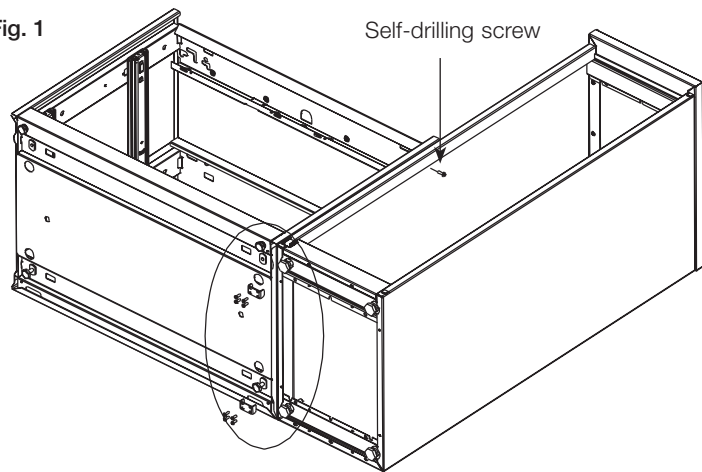


Fig. 2

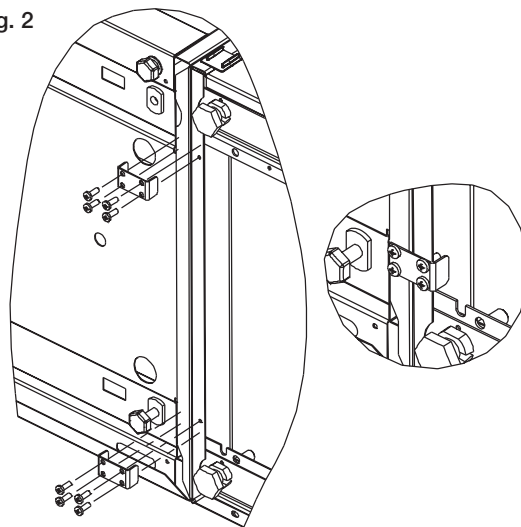


Fig. 3

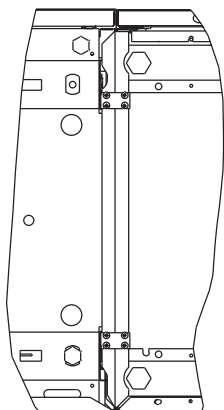
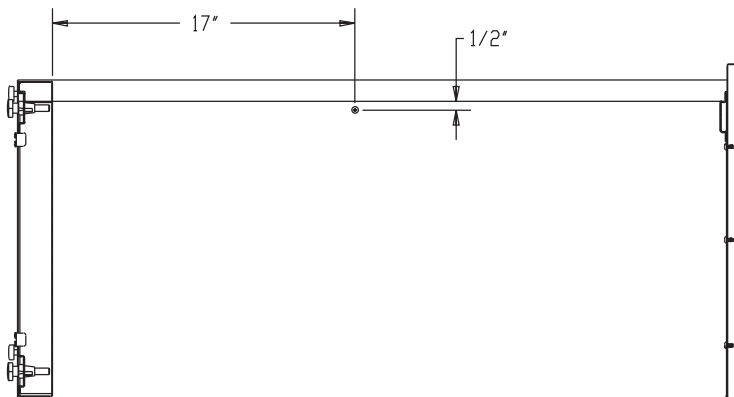


Fig. 4



Quoin Credenza Ganging, continued

6. Carefully return unit to upright position.
7. Place laminate top on Credenza flush to side of locker. This will leave approx. 1/8" overhang on opposite side of top. Align top so there is a 1/16" overhang in the back.

(Fig. 6)

8. Drill pilot holes through crossrails (4 per credenza) for top attachment screws using 3/16" drill bit.
9. Install screws (included with top kit) ensuring the top stays aligned with credenza.
10. Replace shelves and/or drawers as necessary.

Note: Unused hardware may be discarded.

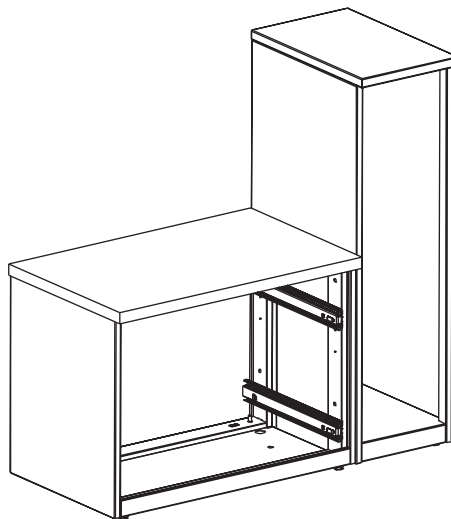


Fig. 6

