

# k. Screen Installation

Straight Screen (w/return; w/o return), KSS\_\_ J Screen, KSJ\_\_ L Screen, KSL\_\_

## Parts List

				<b>Tools Needed:</b> Tape Measure Installation Guide Drill Phillips #2 and #3 Bits 9/64\" Drill Bit 1/16\" Hex Allen Wrench
Inner Clamp Bracket (A) 3AB1647	Outer Clamp Bracket (B) 3AB1643	3/8\" Desk Side Bracket (C) 3AB164602	1/4\" Desk Back Bracket (D) 3AB164601	
8-32 x 1/2\" Truss Head Machine Screw (E) 3AB1622	#14 x 1\" Flat Head Sheet Metal Screw (F) 7434100	6-32 x 1/4\" Extended Tip Set Screw (G) 3AB1622	8mm Diameter Drill Tube (H) 3AB4037	

## k. screen (Straight, J, or L configuration)

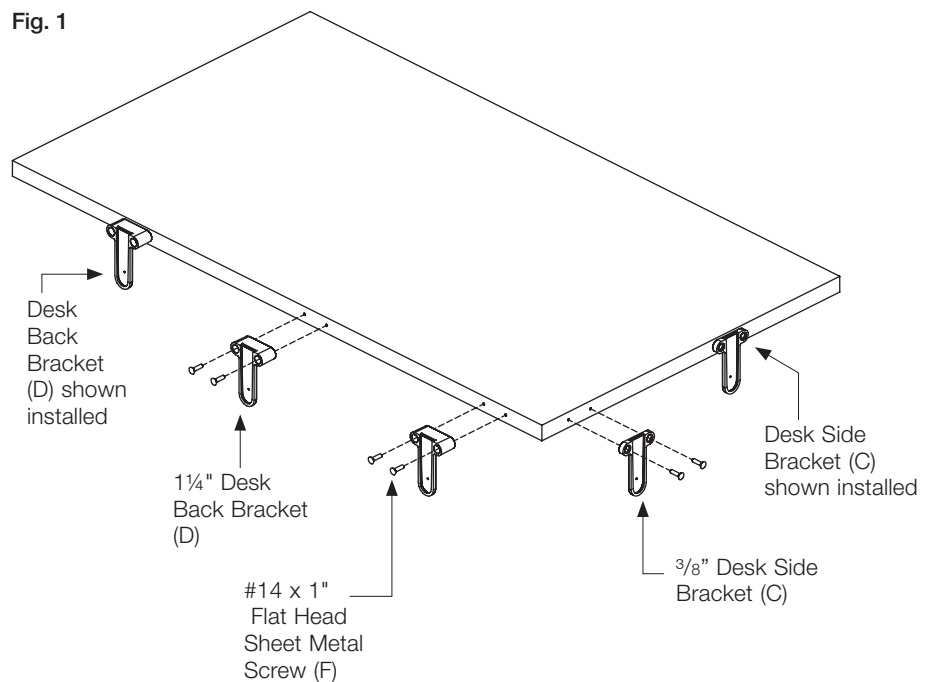
### Pre-installed worksurface for screen attachment

- Review the dealer-supplied installation documents to identify the size and placement of the k. screen to be attached to the worksurface. Match the size and configuration (Straight, J, or L) to the appropriate Installation Appendix A drawing to determine the positions of required worksurface edge drillings. Distances noted are centerline dimensions. The Installation Guide (J) should be placed on top of the worksurface, pressed against the edge, centered on the listed dimensions. Two holes are to be marked on the worksurface edge for each guide position.
- Pre-drill the marked hole locations with a 9/64\" drill bit. This step must not be skipped, regardless of edgebanding material. Note: veneer edgebanding will split if not pre-drilled appropriately. Holes should be pre-drilled to 3/4\" depth. (Fig. 1)

- Note the difference in thickness between the 1/4\" Desk Back Brackets (D) and the 3/8\" Desk Side Brackets (C). Position, in the quantity required, the 1/4\" Desk Back Brackets (D) along the back edge of the worksurface to align with the pre-drilled holes. Attach the brackets to the worksurface using (2) #14 x 1\" Flat Head Sheet Metal Screws (F) per bracket.

- 3.a** If the screen is a J or L configuration screen: Position, in the quantity required, the 3/8\" Desk Side Brackets (C) along the side edge of the worksurface to align with the pre-drilled holes. Attach the brackets to the worksurface with (2) #14 x 1\" Flat Head Sheet Metal Screws (F) per bracket.

Fig. 1



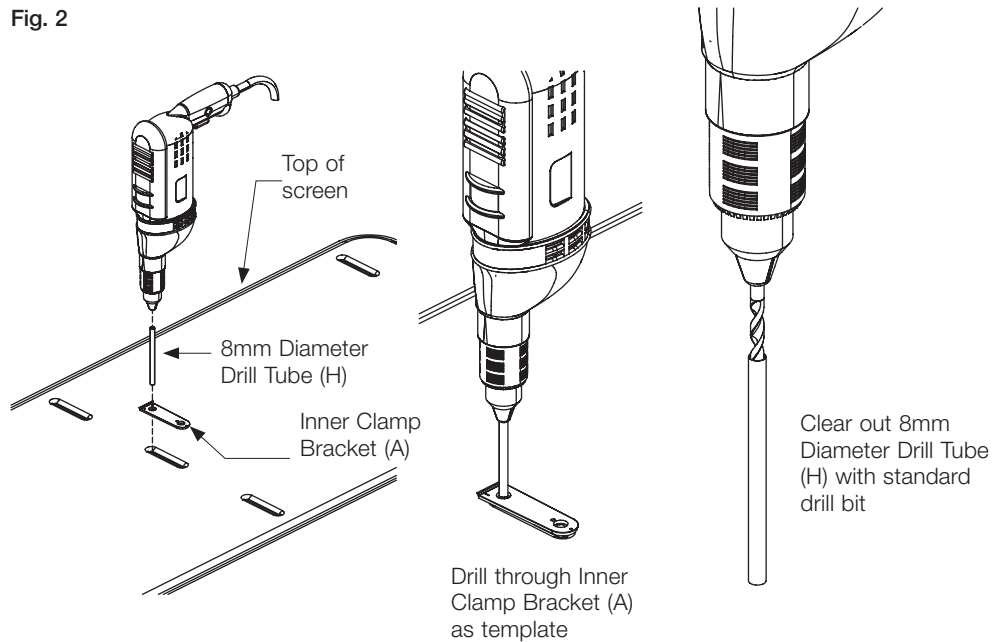
## k. Screen Installation, continued

4. Review the dealer-supplied installation documents to determine which row of screen compressions are to be used for mounting the screen to the worksurface brackets (C/D). The top row will yield maximum below-desk modesty/ minimum above desk screening. The bottom row will yield minimum below-desk modesty/ maximum above desk screening. Refer to Installation Appendix B for screen height and modesty measurements.

5. Dry fit the screen to the desktop to verify positioning, noting the compression locations in the screen that will require pre-drilling for attachment to the Desk Brackets (C/D).

6. Put the 8mm Diameter Drill Tube in the drill chuck and use an Inner Clamp Bracket (A) as a drill template to create the required pairs of holes in the screen. (Fig. 2)

Fig. 2



*Note: The Drill Tube (H) will clog with screen material after creating 2 or 3 holes. The Drill Tube (H) can be easily cleared by running a standard drill bit into the tube to remove the screen material.*

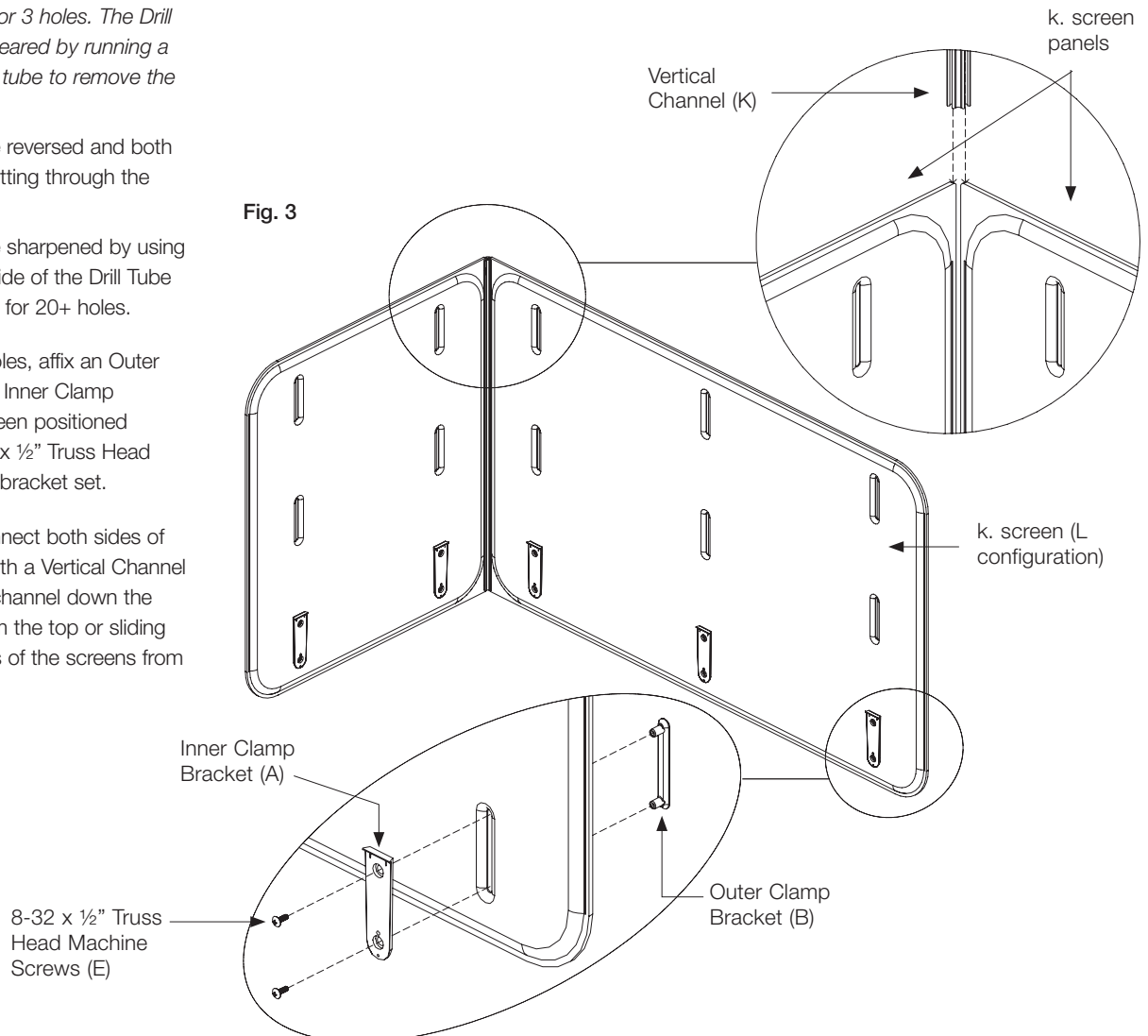
The Drill Tube (H) can be reversed and both ends can be used for cutting through the screen material.

The Drill Tube (H) can be sharpened by using a countersink, but one side of the Drill Tube (H) can typically be used for 20+ holes.

7. For all pairs of screen holes, affix an Outer Clamp Bracket (B) to an Inner Clamp Bracket (A) (with the screen positioned between) using (2) 8-32 x 1/2" Truss Head Machine Screws (E) per bracket set.

8. (For L-screens only) Connect both sides of the L-screen together with a Vertical Channel (K) by either sliding the channel down the sides of the screens from the top or sliding the channel up the sides of the screens from the bottom. (Fig. 3)

Fig. 3

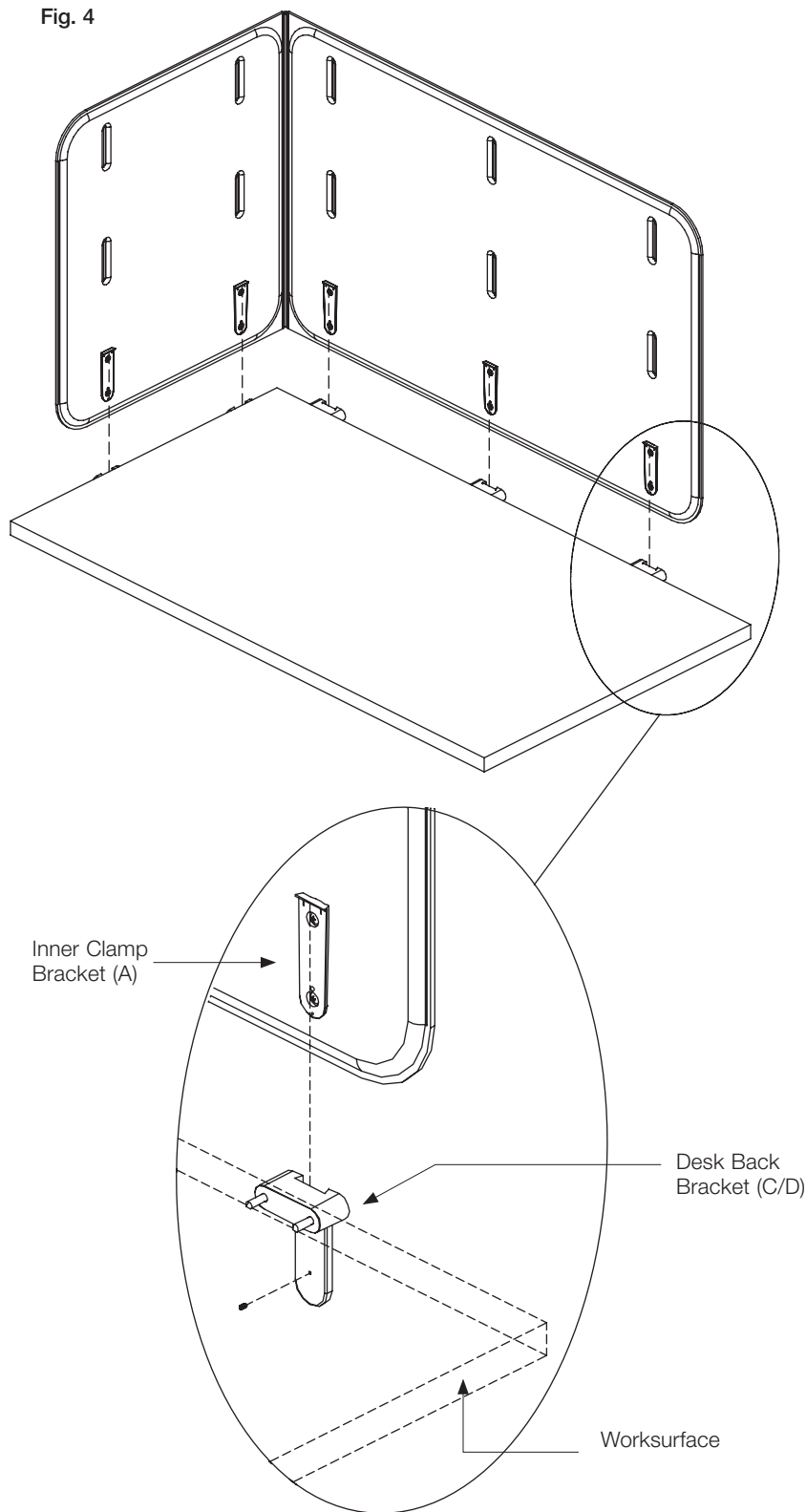


## k. Screen Installation, continued

9. Connect the screen to the Desk Brackets (C/D), by sliding the Inner Brackets (A) down, vertically, into the desk brackets. All of the brackets will need to be guided down at the same time.

10. Install (1) 6-32 x 1/4" Extended Tip Set Screw (G) within each Desk Bracket (C/D), below the worksurface, to secure the screen's position.

Fig. 4



## k. Screen Installation: Appendix A

### k. Screen Bracket Locations (centerline from edge)

Figure A1: 42" Straight Screen

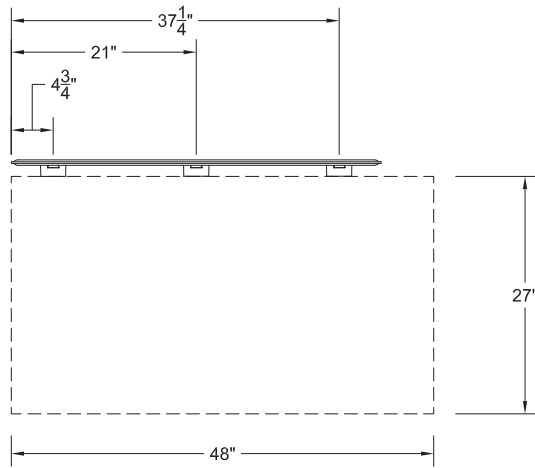


Figure A2: 54" Straight Screen

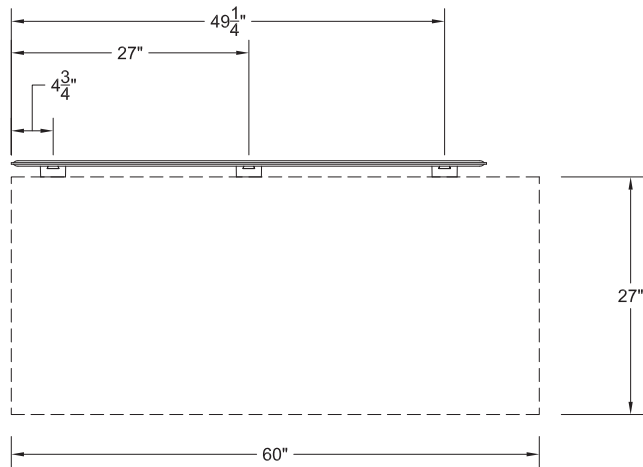
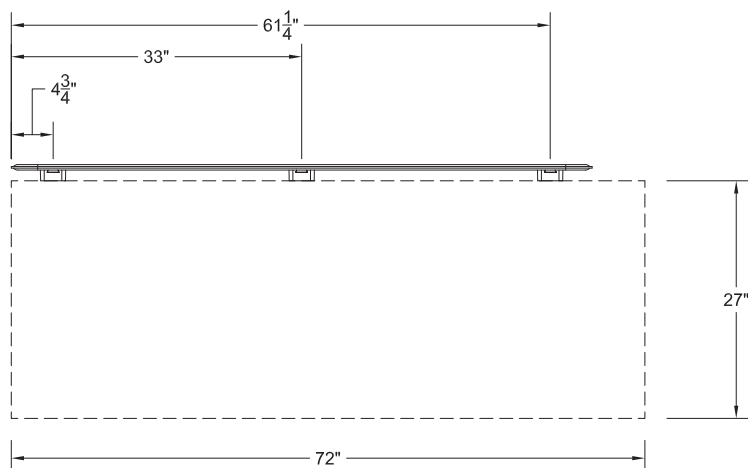


Figure A3: 66" Straight Screen



## k. Screen Installation: Appendix A

### k. Screen Bracket Locations (centerline from edge)

Figure A4: 3"x23" L Screen

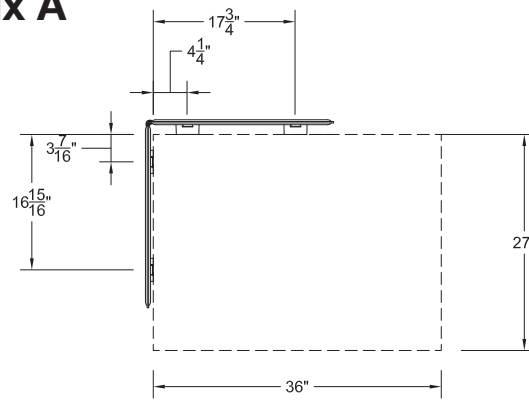


Figure A5: 23"x42" L Screen

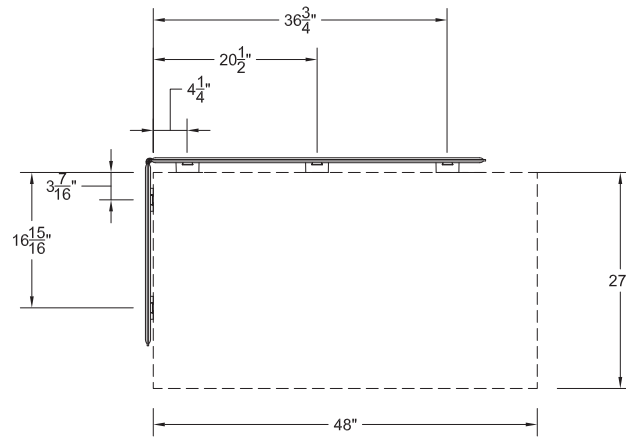


Figure A6: 23"x54" L Screen

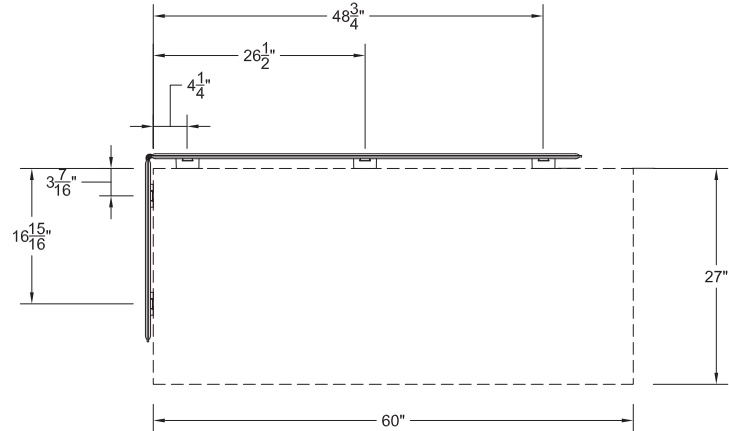
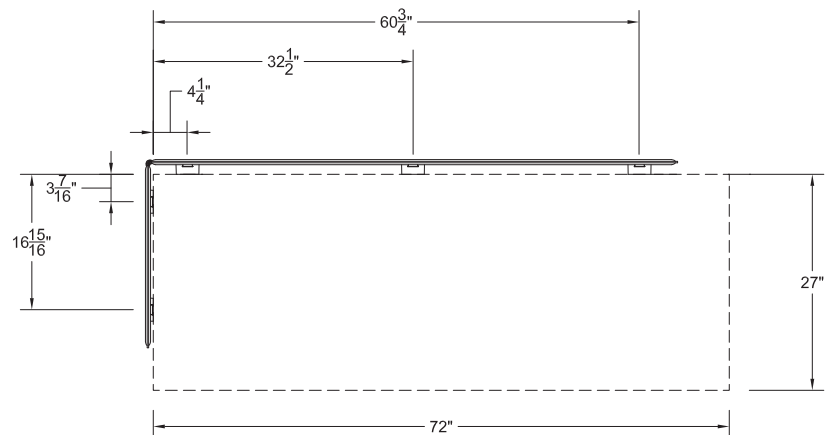


Figure A7: 23"x66" L Screen



# k. Screen Installation: Appendix A

## k. Screen Bracket Locations (centerline from edge)

Figure A8: 42" J Screen

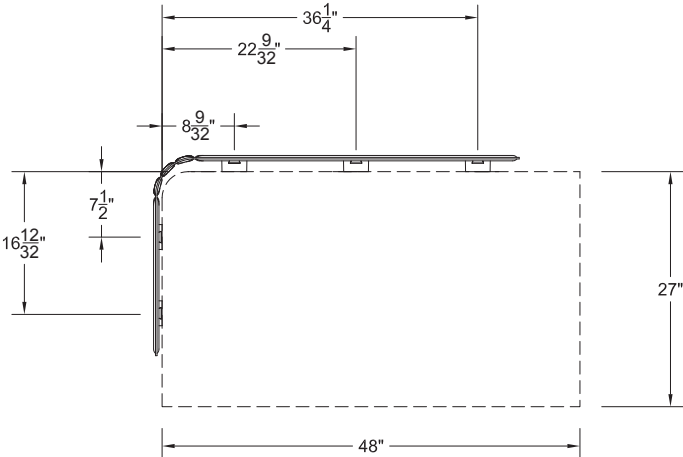
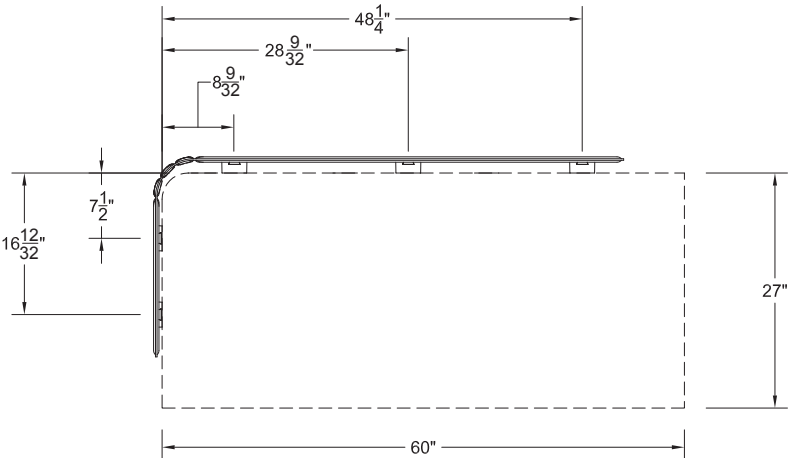


Figure A9: 54" J Screen



# k. Screen Installation: Appendix B

## Screen Mounting Position Options

Figure B1

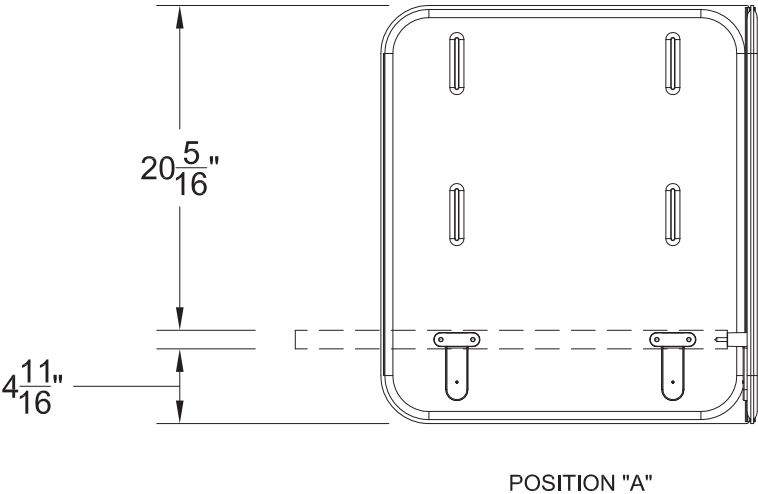


Figure B2

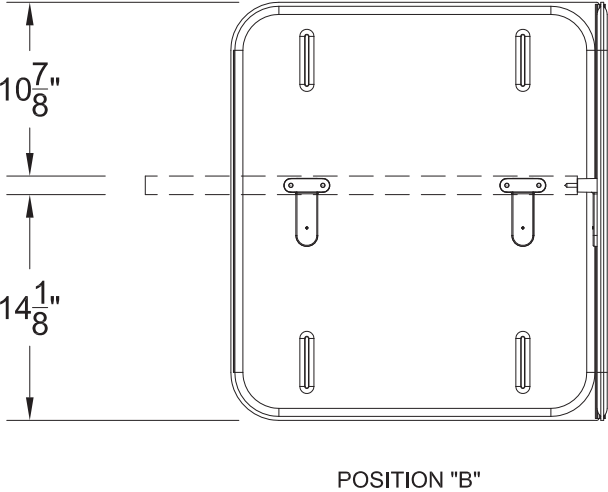


Figure B3

