

Saarinen Side Tables

Laminate, Marble and Veneer Tops

1 Installer Required

160TR – 16" Round

163TR – 20" Round

161TO – 22" Oval



For step-by-step video
instructions, visit knoll.com

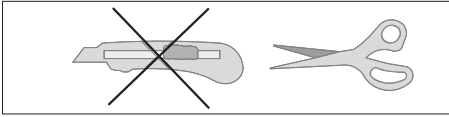


Knoll, Inc
1235 Water Street
East Greenville, PA 18041

Saarinen Side Tables

Hardware

There is no hardware needed, threaded stud in cast base screws directly into the insert on the underside of the top.



Tools

Scissors

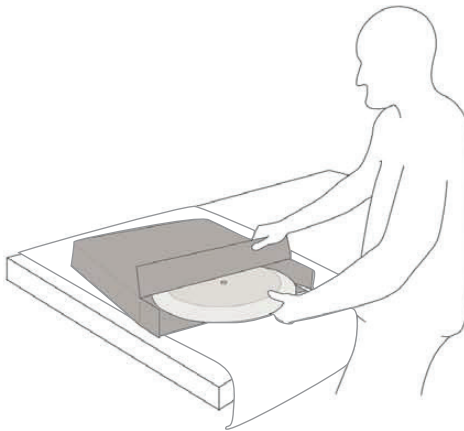
Clean, soft blanket or towel

CAUTION: DO NOT REPLACE SCISSORS WITH AN X-ACTO KNIFE AS SCRATCHES CAN OCCUR

Unpacking top and base cartons

1. The side table will arrive in two boxes: one for the top and one for the base.

Prepare your work area by spreading a clean blanket or towel over a hard flat surface. Open the top box beside your work area using scissors. Carefully remove top and place it on the blanket covered work area with the underside facing up. Then use scissors to open the base carton and remove the base, set aside.

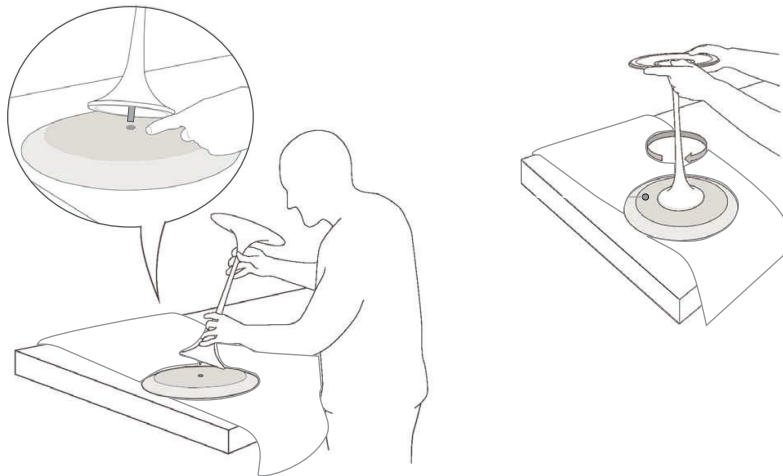


Saarinen Side Tables

Screwing the top and base together

2. Carefully screw the threaded stud in base into the exposed metal insert on the underside of the top. Spin the base until it makes contact with the top and then tighten an additional $\frac{1}{4}$ turn.

CAUTION: OVERTIGHTENING CAN CAUSE DAMAGE



Placement of side table

3. Place one hand on the edge of top while the other hand holds the stem of base. Carefully turn table right side up and place table on desired spot on floor.

CAUTION: NEVER MOVE THE TABLE BY THE TOP ONLY. ALWAYS MOVE THE TABLE BY THE STEM OF THE BASE WHILE SUPPORTING THE TOP WITH OTHER HAND.

