

KnollTextiles

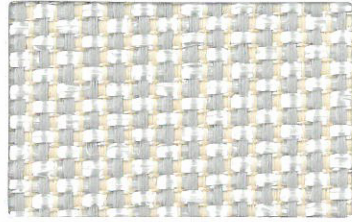
KnollTextiles offers some of the most technically advanced materials in the industry, combining beauty and function in the Modernist tradition.

A fabric supplier for:

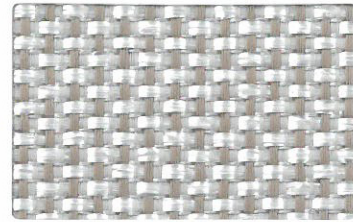


Conwed | Wall Technology
designscape

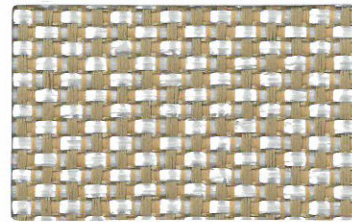
Heavy Metal W539



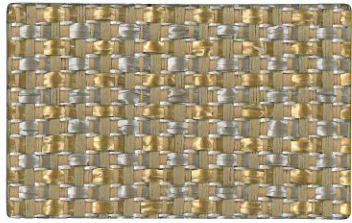
W539/1 Titanium



W539/2 Pewter



W539/3 Golden Nugget



W539/5 Ore

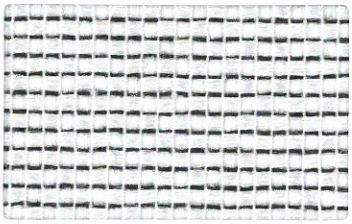


W539/6 Brass Rubbing

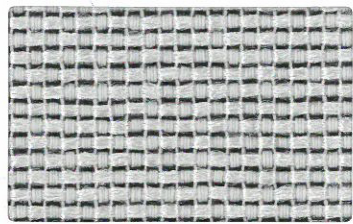


W539/7 Armor

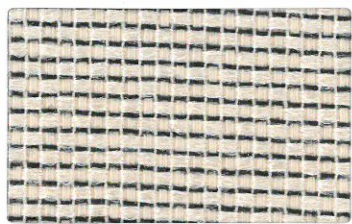
Basket Draft W249



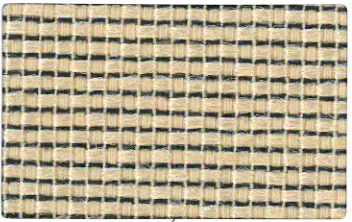
W249/3 Luster White



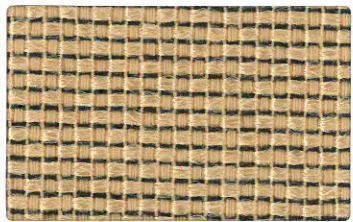
W249/2 Silver



W249/4 Moon



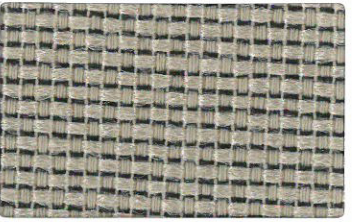
W249/5 Opalescent



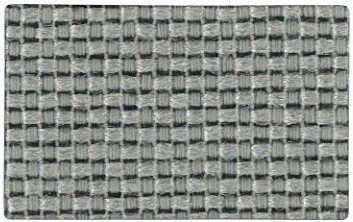
W249/6 Gold



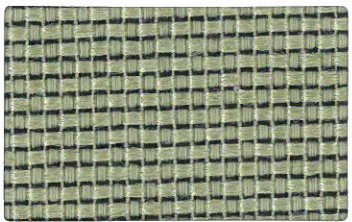
W249/7 Topaz



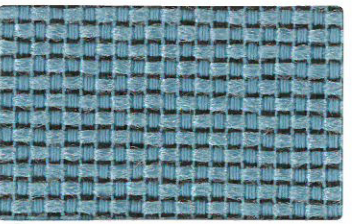
W249/8 Pewter



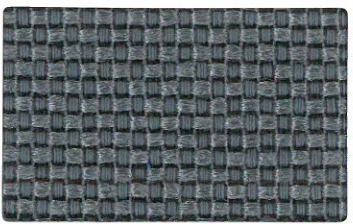
W249/9 Mineral



W249/14 Herb

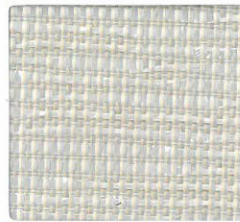


W249/13 Pool

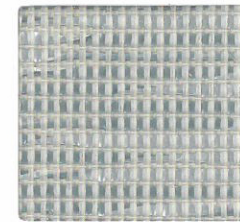


W249/11 Petrol

Hard Rock W1007



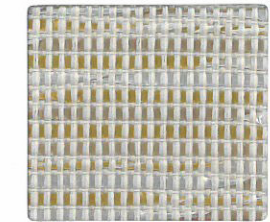
W1007/1 Alabaster



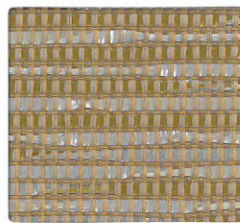
W1007/2 Marble



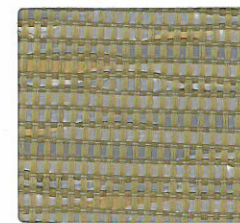
W1007/3 Moonstone



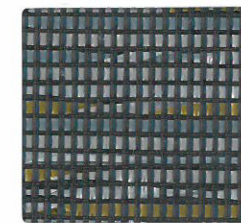
W1007/4 Quartz



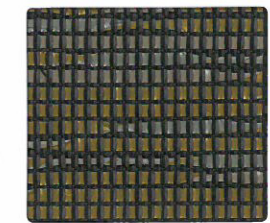
W1007/5 Ochre



W1007/6 Patina

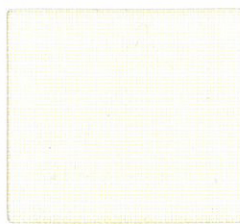


W1007/8 Lapis

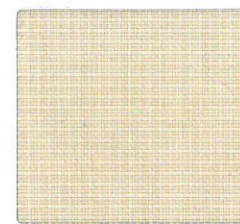


W1007/7 Tiger Eye

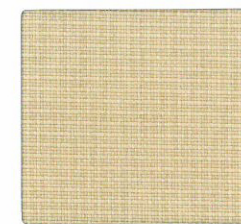
Element W1077



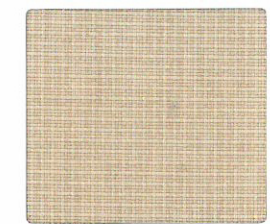
W1077/1 Calcium



W1077/2 Mercury



W1077/3 Helium



W1077/4 Rhodium



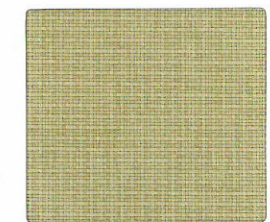
W1077/8 Copper



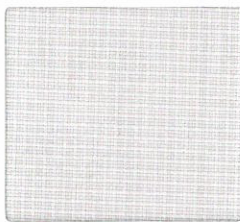
W1077/5 Gold



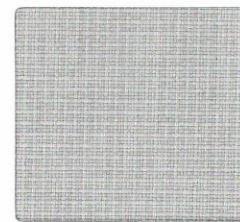
W1077/6 Tungsten



W1077/7 Argon



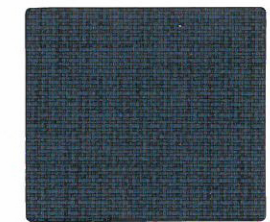
W1077/9 Titanium



W1077/10 Silver



W1077/11 Zinc



W1077/12 Cobalt



W1077/13 Cadmium

Name	Heavy Metal, designed by Suzanne Tick
Style Number	W539
Primary Use	Wrapped wall panels, upholstery
Content	Olefin 55%, recycled polyester 45%
Backing	Acrylic
Weight	14 oz. per linear yard
Width	66 inches
Flame Resistance	ASTM E-84 (unadhered) Class A
Lightfastness	AATCC 16E, 40 hours, Class 5
Maintenance	W-S: Clean with water or solvent based cleaning agent
Origin	United States
Custom	Some custom colors available with a minimum of 600 yards. Additional charges or lead times may be required.
Environmental	55% solution dyed fiber 45% post-consumer recycled content This fabric is GREENGUARD® certified and may contribute to LEED® certification. The GREENGUARD® Environmental Institute provides third party certification for low chemical and particle emissions in interiors products.



Name	Basket Draft, designed by Suzanne Tick
Style Number	W249
Primary Use	Panel systems, wrapped wall panels
Content	Polyester 55%, recycled polyester 45%
Weight	17.5 oz. per linear yard
Width	66 inches
Flame Resistance	ASTM E-84 (unadhered) Class A
Lightfastness	AATCC 16E, 40 hours, Class 5
Maintenance	W-S: Clean with water or solvent based cleaning agent
Origin	United States
Custom	Some custom colors available with a minimum of 200 yards. Additional charges or lead times may be required.
Environmental	45% post-consumer recycled content This fabric is GREENGUARD® certified and may contribute to LEED® certification. The GREENGUARD® Environmental Institute provides third party certification for low chemical and particle emissions in interiors products.



Name	Hard Rock, designed by Suzanne Tick
Style Number	W1007
Primary Use	Wrapped wall panels
Content	Recycled polyester 61%, olefin 39%
Backing	Acrylic
Weight	12 oz. per linear yard
Width	66 inches
Flame Resistance	ASTM E-84 (unadhered) Class A
Lightfastness	AATCC 16E, 40 hours, Class 5
Maintenance	W-S: Clean with water or solvent based cleaning agent
Origin	United States
Custom	Some custom colors available with a minimum of 600 yards. Additional charges or lead times may be required.
Environmental	61% post-consumer recycled content This fabric is GREENGUARD® certified and may contribute to LEED® certification. The GREENGUARD® Environmental Institute provides third party certification for low chemical and particle emissions in interiors products.



Name	Element
Style Number	W1077
Primary Use	Panel systems, wrapped wall panels
Content	Polyester 100%
Weight	13 oz. per linear yard
Width	66 inches
Flame Resistance	ASTM E-84 (unadhered) Class A
Lightfastness	AATCC 16E, 40 hours, Class 4.5
Maintenance	W-S: Clean with water or solvent based cleaning agent
Origin	United States
Custom	Some custom colors available with a minimum of 300 yards. Additional charges or lead times may be required.
Environmental	This fabric is GREENGUARD® certified and may contribute to LEED® certification. The GREENGUARD® Environmental Institute provides third party certification for low chemical and particle emissions in interiors products.

