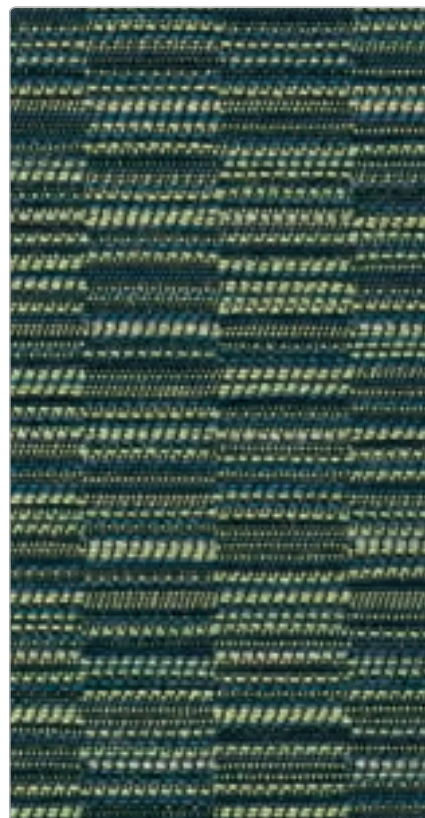


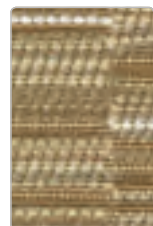


# KnollTextiles COLLECTION

## STACKS



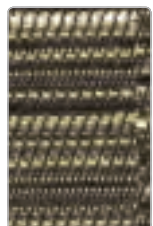
SA81 (K528/6)  
Wave



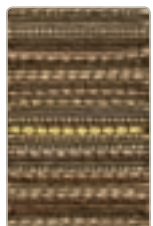
SA90 (K528/1)  
Plywood



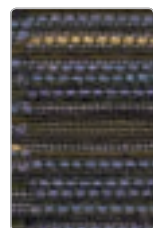
SA89 (K528/2)  
Slate



SA88 (K528/3)  
Tread



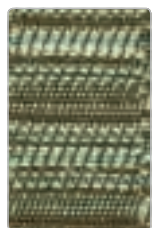
SA87 (K528/4)  
Log



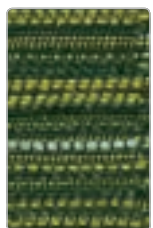
SA80 (K528/5)  
Grape



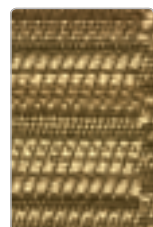
SA81 (K528/6)  
Wave



SA82 (K528/7)  
Glass



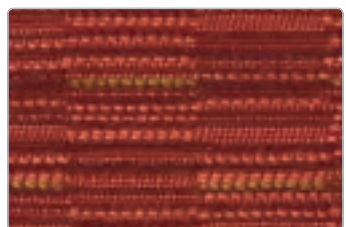
SA83 (K528/8)  
Fir



SA84 (K528/9)  
Hay

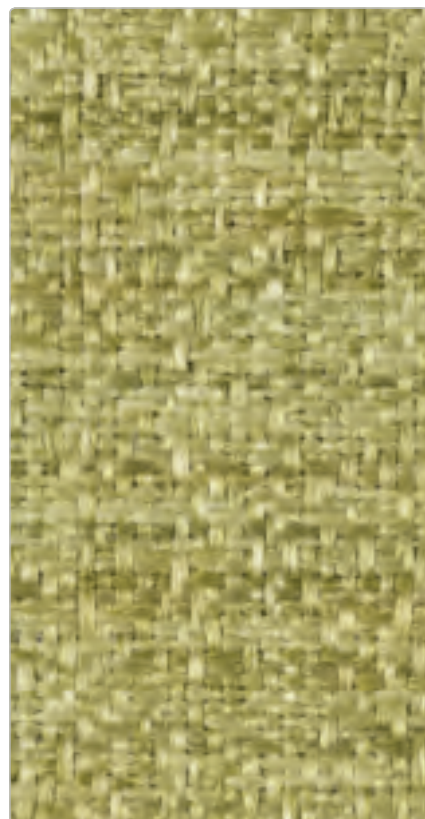


SA85 (K528/10)  
Sod



SA86 (K528/12)  
Brick

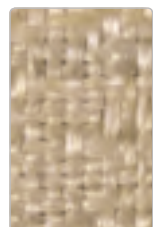
## SONNET



SO81 (K1460/4)  
Apple



SO80 (K1460/1)  
Ivory



SO79 (K1460/2)  
Cane



SO78 (K1460/3)  
Gold



SO77 (K1460/5)  
Kelp



SO76 (K1460/6)  
Sierra



SO75 (K1460/7)  
Denim



SO74 (K1460/8)  
Mulberry



SO73 (K1460/9)  
Butterscotch



SO72 (K1460/10)  
Cedar



SO70 (K1460/11)  
Pumice



SO71 (K1460/12)  
Tornado

AXIOM / BISTRO / CHANCE / FERRY / ROAM / SONNET / STACKS / VENUE

**KnollTextiles**

For memo samples call **866-565-5858**  
or visit [knolltextiles.com](http://knolltextiles.com)

### Specifications/Performance

Pattern	Fiber Content	Finish	Weight	Cleaning Code	Abrasion Resistance	Light Fastness	Crocking (color transfer)	Pilling	Seam Slippage	Breaking Strength	Flame Resistance
Axiom 54"	88% Vinyl (face), 12% Polyester (backing)		31 oz./lin.yd	W Bleach	100,000+ double rubs	Class 5	Dry Class 5 Wet Class 5	Class 5	Warp: 39.5 lbs Fill: 78 lbs	Warp: 78 lbs Fill: 70 lbs	Cal 117
Bistro 57"	50% Post-consumer Recycled Polyester, 50% Polyester	Stain & Soil Repellent	13.5 oz./lin.yd	WS – Water & Solvents	90,000+ double rubs	Class 5	Dry Class 5 Wet Class 5	Class 3	Warp: 86 lbs Fill: 86 lbs	Warp: 262 lbs Fill: 269 lbs	Cal 117
Chance 56"	55% Acrylic, 45% Polyester	InCase	12 oz./lin.yd	WS – Water & Solvents	50,000+ double rubs	Class 5	Dry Class 5 Wet Class 5	Class 4	Warp: 86.5 lbs Fill: 58.5 lbs	Warp: 244 lbs Fill: 178 lbs	Cal 117
Ferry 54"	67% Polyester, 33% Acrylic	Teflon	19.75 oz./lin.yd	S	70,000+ double rubs	Class 4.5	Dry Class 5 Wet Class 5	Class 4.5	Warp: 73 lbs Fill: 76.5 lbs	Warp: 135 lbs Fill: 169 lbs	Cal 117
Roam 55"	34% Wool, 33% Olefin, 27% Polyester, 6% Nylon	Teflon	16 oz./lin.yd	S	50,000+ double rubs	Class 5	Dry Class 4.5 Wet Class 4.5	Class 4	Warp: 119 lbs Fill: 109.5 lbs	Warp: 153 lbs Fill: 181 lbs	Cal 117
Sonnet 54"	100% Polyester		19 oz./lin.yd	WS – Water & Solvents	55,000+ double rubs	Class 4.5	Dry Class 5 Wet Class 4.5	Class 4	Warp: 39 lbs Fill: 44.5 lbs	Warp: 289 lbs Fill: 265 lbs	Cal 117
Stacks 54"	62% Polyester, 30% Post-industrial Recycled Polyester, 8% Post-consumer Recycled Polyester		14.5 oz./lin.yd	WS Bleach	75,000+ double rubs	Class 5	Dry Class 5 Wet Class 5	Class 4.5	Warp: 60.5 lbs Fill: 76 lbs	Warp: 212 lbs Fill: 283 lbs	Cal 117
Venue 58"	88% Polyester, 8% Post-industrial Recycled Polyester, 4% Post-consumer Recycled Polyester	Stain & Soil Repellent	14 oz./lin.yd	WS – Water & Solvents	60,000+ double rubs	Class 4.5	Dry Class 4.5 Wet Class 4.5	Class 5	Warp: 95 lbs Fill: 77 lbs	Warp: 141 lbs Fill: 175 lbs	Cal 117

For grading, please refer to our website at [www.globaltotaloffice.com](http://www.globaltotaloffice.com).



**Global - Canada**  
The Global Group  
1350 Flint Rd., Downsview ON Canada M3J 2J7  
Sales & Marketing: Tel (1-877) 446-2251  
Customer Service: Fax (800) 361-3182  
Government Customer Service: Fax (416) 739-6319

**Global - U.S.A.**  
17 West Stow Road P.O. Box 562  
Marlton New Jersey U.S.A. 08053  
Tel (856) 596-3390 (800) 220-1900  
Fax (856) 596-5684

**Global - International**  
560 Supertest Road Downsview  
Ontario Canada M3J 2M6  
Tel (416) 661-3660 (800) 668-5870  
Fax (416) 667-1821

**GGI Office Furniture (UK) Ltd.**  
Global Way Darwen  
Lancashire UK BB3 0RW  
Tel +44(0) 1254 778500  
Fax +44(0) 1254 778519

Visit us on the World Wide Web at [www.globaltotaloffice.com](http://www.globaltotaloffice.com)

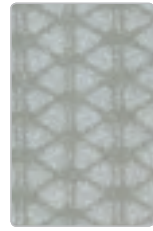
Offices throughout Canada, United States, United Kingdom, France, Brazil, Australia and Italy. Distribution around the world. A member of the Global Group.



AXIOM



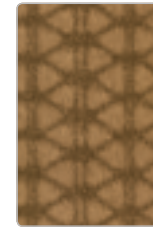
AX39 (K1650/7)  
Bondi Blue



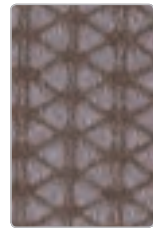
AX38 (K1650/1)  
Sparkler



AX37 (K1650/2)  
Morel



AX36 (K1650/3)  
Coppertone



AX33 (K1650/4)  
Bittersweet



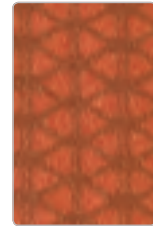
AX34 (K1650/5)  
Matter



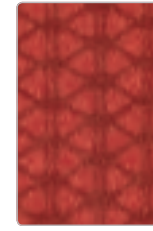
AX35 (K1650/6)  
Azurite



AX32 (K1650/8)  
Stem

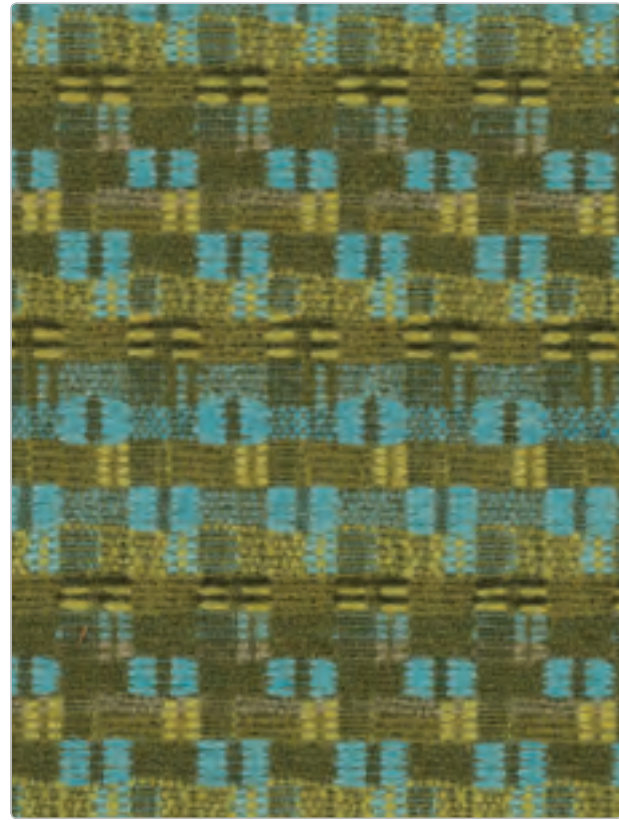


AX31 (K1650/9)  
Ignite



AX30 (K1650/10)  
Cardinal

ROAM



RO03 (K1657/3)  
Limelight



RO04 (K1657/1)  
Fizz



RO05 (K1657/2)  
Mockingbird



RO06 (K1657/4)  
Citron



RO07 (K1657/5)  
Swank



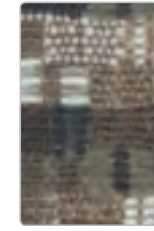
RO08 (K1657/6)  
Cosmo



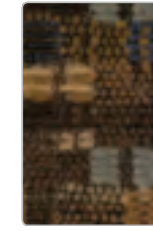
RO00 (K1657/7)  
Gale



RO09 (K1657/8)  
Prairie

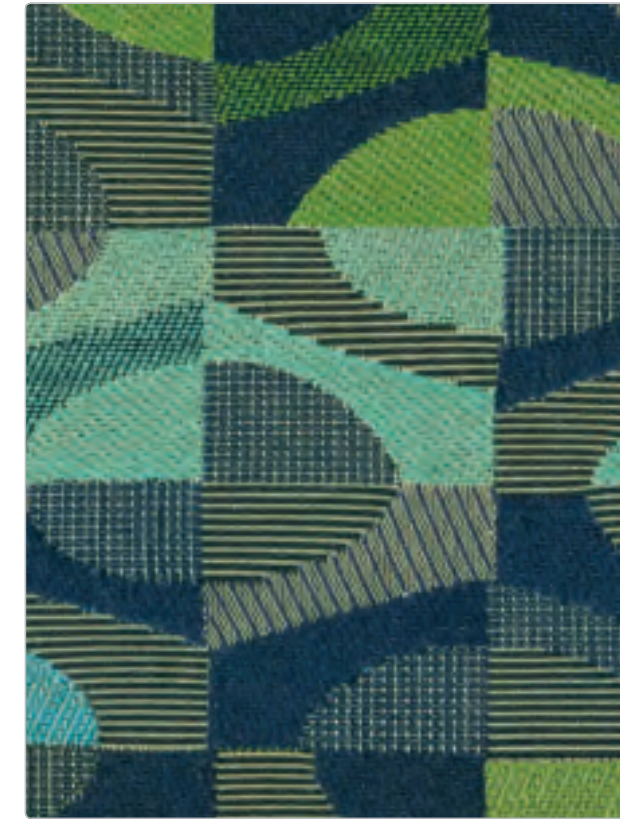


RO10 (K1657/9)  
Fedora



RO11 (K1657/10)  
Coffee

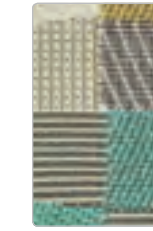
BISTRO



B131 (K1775/6)  
Pistachio



B135 (K1775/1)  
Vanilla Bean



B136 (K1775/2)  
Chamomile



B137 (K1775/3)  
Lemon Drop



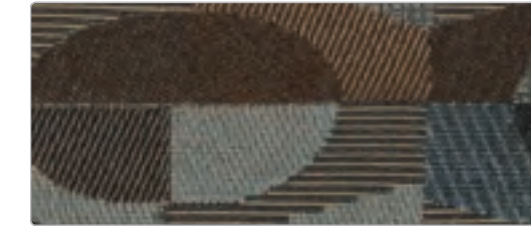
B133 (K1775/4)  
Cinnamon



B134 (K1775/5)  
Jasmine

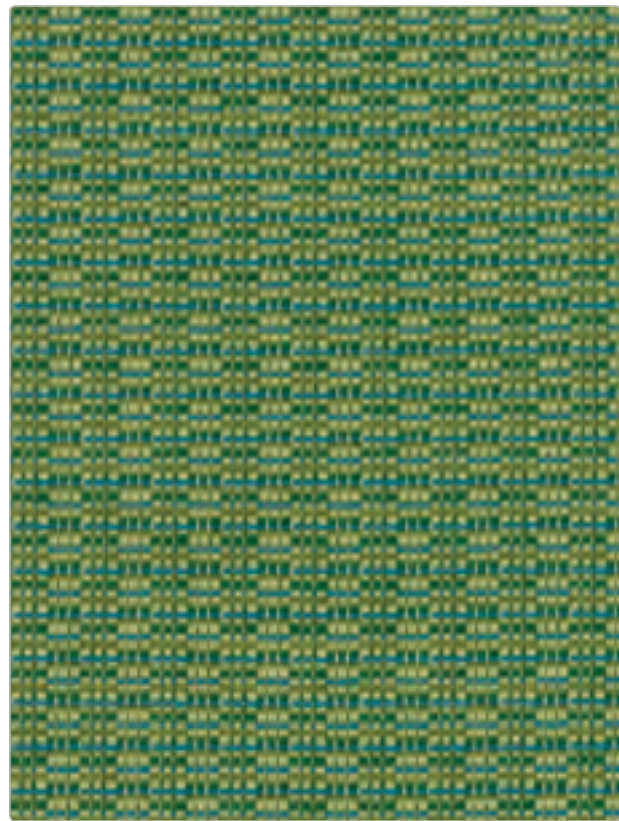


B132 (K1775/7)  
Chai

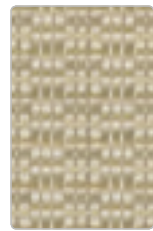


B130 (K1775/8)  
Latte

CHANCE



CE19 (K1552/3)  
Fern



CE18 (K1552/1)  
Gust



CE17 (K1552/2)  
Sable



CE16 (K1552/4)  
Autumn



CE15 (K1552/5)  
Flash



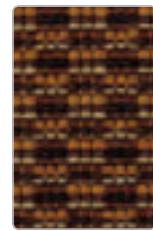
CE14 (K1552/6)  
Regal



CE13 (K1552/7)  
Moonlit



CE12 (K1552/8)  
Sailor



CE11 (K1552/9)  
Bear



CE10 (K1552/10)  
Tide

FERRY



FE00 (K1697/5)  
Port



FE10 (K1697/1)  
Whitehall



FE16 (K1697/2)  
Edgewater



FE17 (K1697/3)  
Highlands



FE02 (K1697/4)  
Liberty Harbor



FE03 (K1697/6)  
Newport



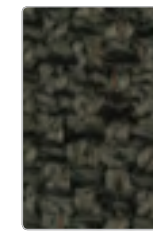
FE04 (K1697/7)  
Belford



FE07 (K1697/8)  
Redhook



FE08 (K1697/9)  
Warren



FE09 (K1697/10)  
Marin

VENUE



VE81 (K1558/7)  
Riverbank



VE70 (K1558/1)  
Khaki



VE71 (K1558/2)  
Toast



VE72 (K1558/3)  
Celery



VE73 (K1558/4)  
Autumn Leaf



VE74 (K1558/5)  
Cherry



VE75 (K1558/6)  
Tide



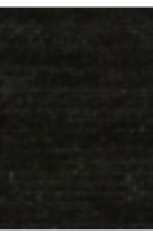
VE76 (K1558/8)  
Grape



VE78 (K1558/10)  
Tabby



VE79 (K1558/11)  
Stonework



VE80 (K1558/12)  
Noir