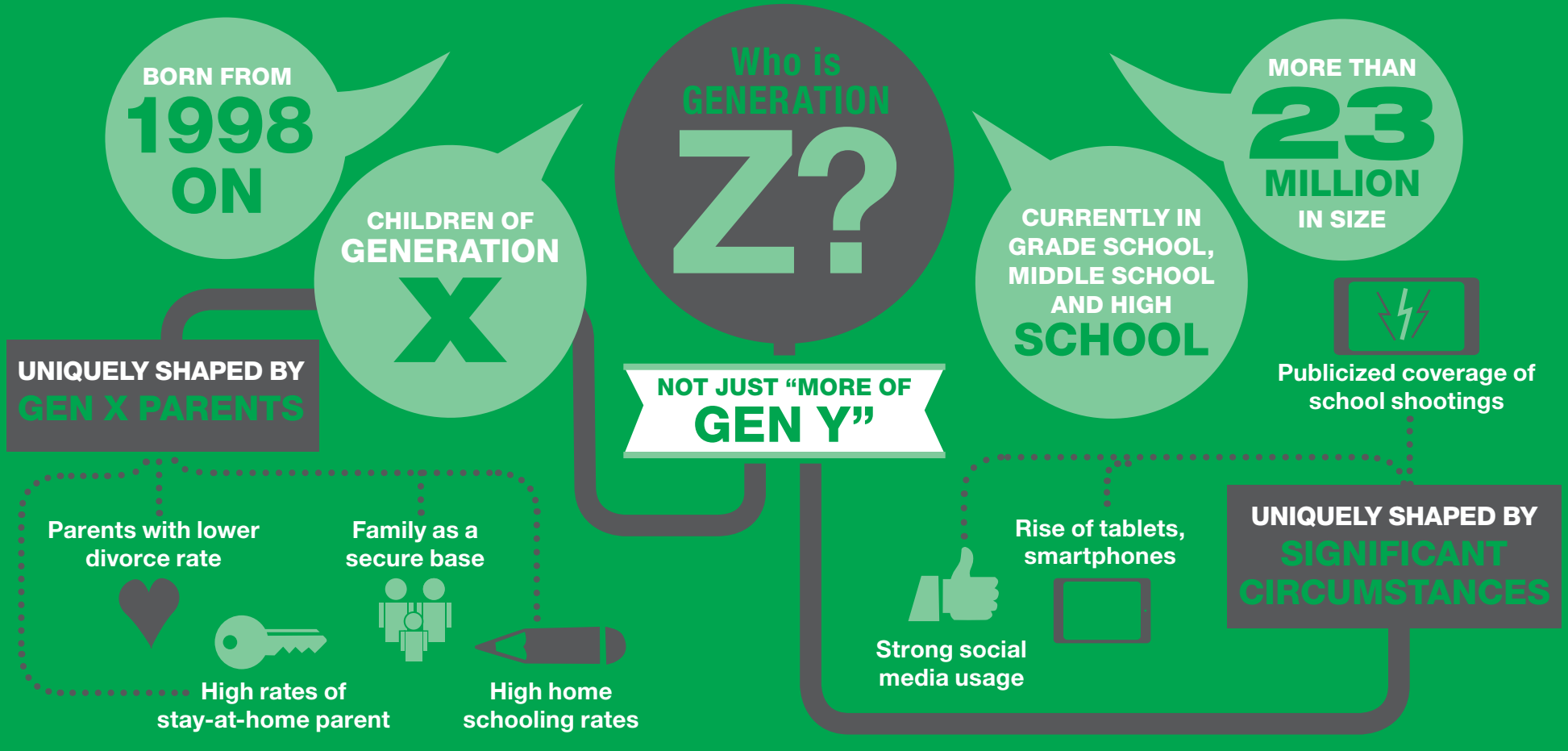


# GENERATION Z

## ARRIVING TO THE OFFICE SOON

Generation Z, the little-understood cohort following Generation Y, will start entering the workplace at the end of this decade. Their unique upbringing and characteristics mean the way they work will be different than their predecessors. Future workplace design will need to anticipate their needs and styles.



## THREE CHARACTERISTICS OF GENERATION Z

