



KnollTextiles

SitOnIt • Seating™



Chronicle



Bamboo



Desert



Cascade



Dragonfly



Licorice



Quarry



Peppercorn

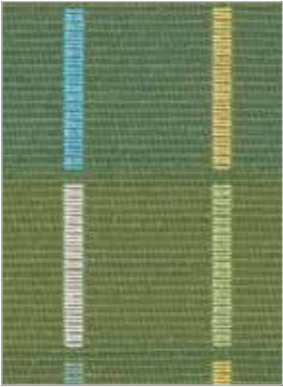
Origins



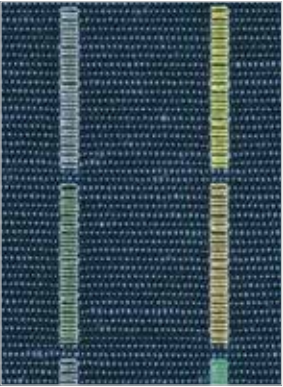
Paprika



Nomad



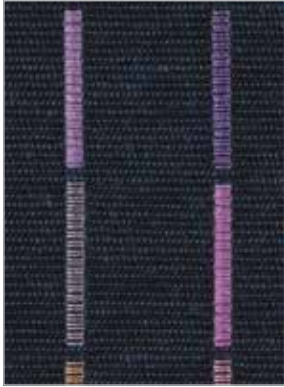
Laurel



Pacific



Tamarind



Mulberry



Gingersnap



Sequoia

Durand



Safflower



Moonlight



Linseed



Lily Pond



Azalea



Wild Berries



Chestnut

Sonnet



Ivory



Cane



Gold



Apple



Kelp



Sierra



Denim



Mulberry



Butterscotch



Cedar



Pumice



Tornado

Journey



Mitten



Jingle



Beach



Twist



Canyon



Allspice



Avocado



Aqua



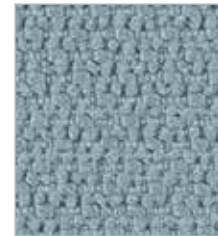
Hot Pink



Banner



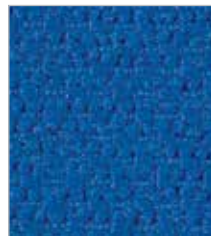
Plum



Forecast



Wavelength



Arcade



Flight



Chime



Mushroom



Dark Chocolate

Hourglass



Air



Gull



Sandbar



Cork



Flax



Beeswax



Tangerine



Sunshine



Sizzle



Flame



Tart



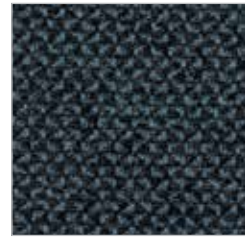
Jelly



Bluebird



Liberty



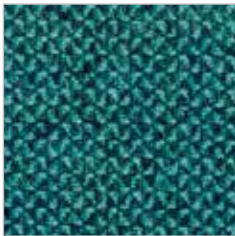
Indigo



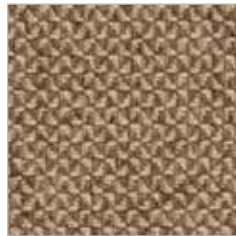
Spring



Olive



Aegean



Latte



Almond



Bark



Mocha



Galaxy



Misty



Iron



Wire



Alley



Caviar

Technical Information

Name	Content	Finish / Backing	Repeat	Cleaning Code	Abrasion Resistance (Double Rubs)	CAL133	SOI Grade	IDEON Grade
Chronicle	73% Post Industrial Recycled Polyester 27% Post-Consumer Recycled Polyester	N/A	H: 7.0" V: 5.5"	W-S	85,000+ Wyzenbeek method	133	7	N
Durand	39% Polyester 37% Post Consumer Polyester 24% Nylon	Soil and Stain Repellent Acrylic Backing	H: 0.50" V: 5.0"	W-S Bleach	100,000+ Wyzenbeek method	133	6	M
Hourglass	77% Post Consumer Recycled Polyester 15% Polyester 8% Nylon	Soil and Stain Repellent	N/A	W-S	100,000+ Wyzenbeek method	133	4	E
Journey	50% Post Consumer Recycled Polyester 50% Polyester	Soil and Stain Repellent Acrylic Backing	N/A	W-S	100,000+ Wyzenbeek method	133	5	H
Origins	43% Cotton 33% Nylon 20% Linen 4% Post Consumer Recycled Polyester	Teflon Acrylic Backing	H: 9.25" V: 11.0"	S	100,000+ Wyzenbeek method		7	N
Sonnet	100% Polyester	Latex Backing	N/A	W-S	55,000+ Wyzenbeek method	133	5	G

For memo samples call 866.565.5858
or visit knolltextiles.com

Cleaning Code Definitions

W-S: Water-based cleaning agents and foam or mild, water-free solvents may be used for cleaning this fabric.

W-S Bleach: Clean with water or solvent based cleaning agents, or diluted household bleach.

S: Only mild, pure water-free dry cleaning solvents may be used for cleaning this fabric.

Icon Upholstery Definitions



Fire Retardancy

Flammability testing determines a fabric's resistance to burning. Passes: California Technical Bulletin 117.



Colorfastness to Wet and Dry Crocking

Colorfastness to wet and dry crocking refers to the rubbing off of color from fabric onto clothing, hands or other materials; which can occur under wet or dry conditions. Passes: AATCC 8.1974 Dry Crocking, Class 4 minimum; Wet Crocking, Class 3 minimum.



Colorfastness to Light

Colorfastness to light is the degree to which a fabric will retain its true color when exposed to light. Passes: AATCC 16A.1974 or AATCC 16E.1976; Class 4 minimum at 40 hours.



Physical Properties

Three physical property tests include: the brush pill test to determine a fabric's tendency to pill; breaking/tensile strength tests the ability of a fabric to withstand tension without breaking or tearing; seam slippage measures the pulling apart of fabric at the seams. Passes: Brush Pill: ASTM D3511, 3 - 4 minimum. Breaking Strength ASTM D3597.D1682.64 (1975) 50 lbs. minimum in warp and weft. Seam Slippage: ASTM D3597.D434.75 25 lbs. minimum in warp and weft.



Abrasion

Abrasion is the ability of a fabric to withstand damage from wear and rubbing. Passes: Heavy Duty: ASTM 3597 modified (No. 10 cotton duck); 30,000 double rubs Wyzenbeek Method or ASTM 4966 modified (with 21 oz. weight); 40,000 rubs Martindale Method.



Cal 133

These fabrics can be used in combination with other designated SitOnIt and IDEON components to meet the California Technical Bulletin 133 standard for furniture flammability.

SitOnIt • Seating™



888.274.8664

714.995.4885 Fax

www.sitonit.net

sales@sitonit.net

www.IDEONDesign.com

sales@ideondesign.com

Showroom Locations

Los Angeles

6415 Katella Avenue
Cypress, CA 90630

Chicago

222 Merchandise Mart Plaza
Suite 1150
Chicago, IL 60654

New York City

11 East 26th
New York, NY 10010

